

PEACE RIVER MANASOTA REGIONAL WATER SUPPLY AUTHORITY
BOARD OF DIRECTORS MEETING
April 3, 2024

REGULAR AGENDA
ITEM 1

Water Supply Conditions Report

Presenter - Richard Anderson, Deputy Director

Recommended Action - **Status Report.** This item is presented for the Board's information and no action is required.

Water Supply Conditions at the Peace River Facility as of March 18, 2024.

- Water Supply Quantity: Excellent
- Treated Water Quality: Excellent

March Water Demand	28.77 MGD
March River Withdrawals	23.07 MGD
<u>Storage Volume:</u>	
Reservoirs	6.66 BG
ASR	<u>8.72 BG</u>
Total	15.38 BG

Attachments:

Presentation Materials

Water Supply Conditions



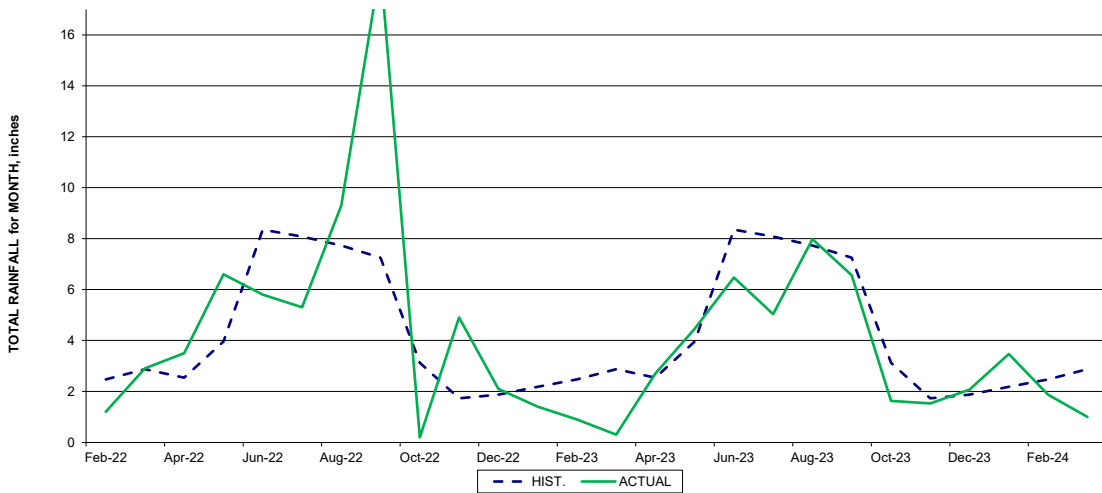
**Regular Item 1
April 03, 2024**



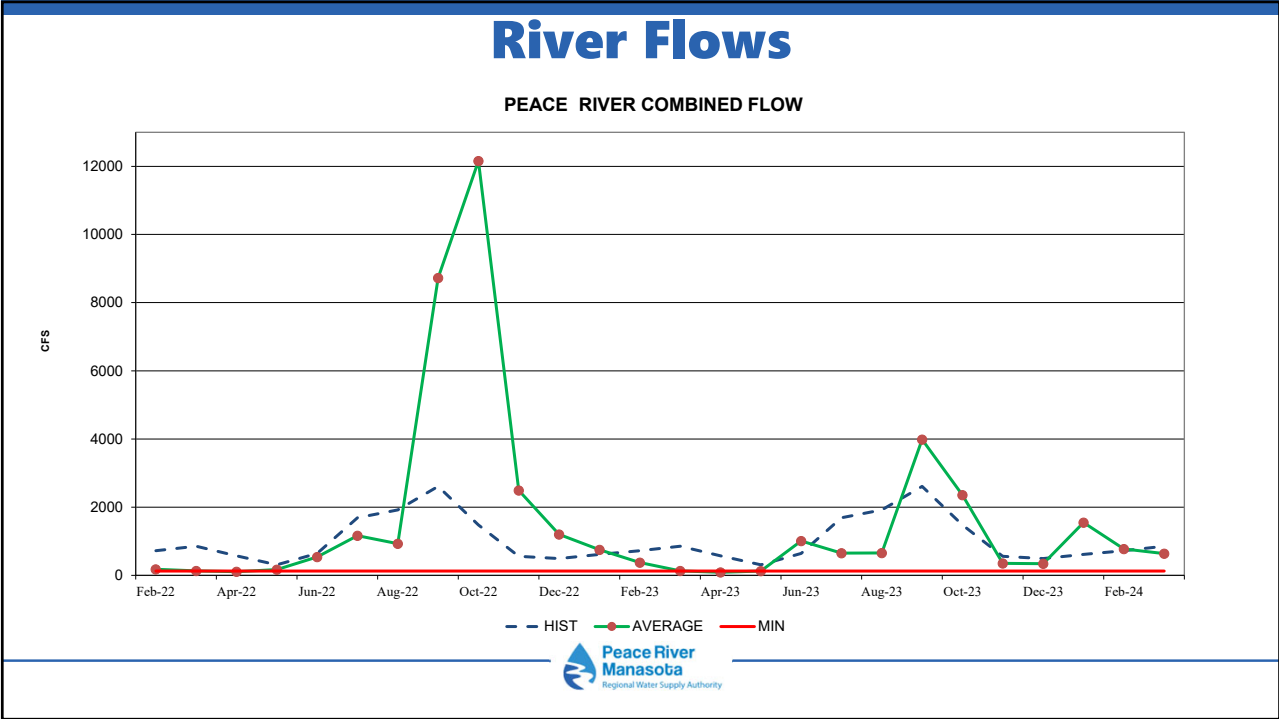
1

Peace River Basin Average Rainfall

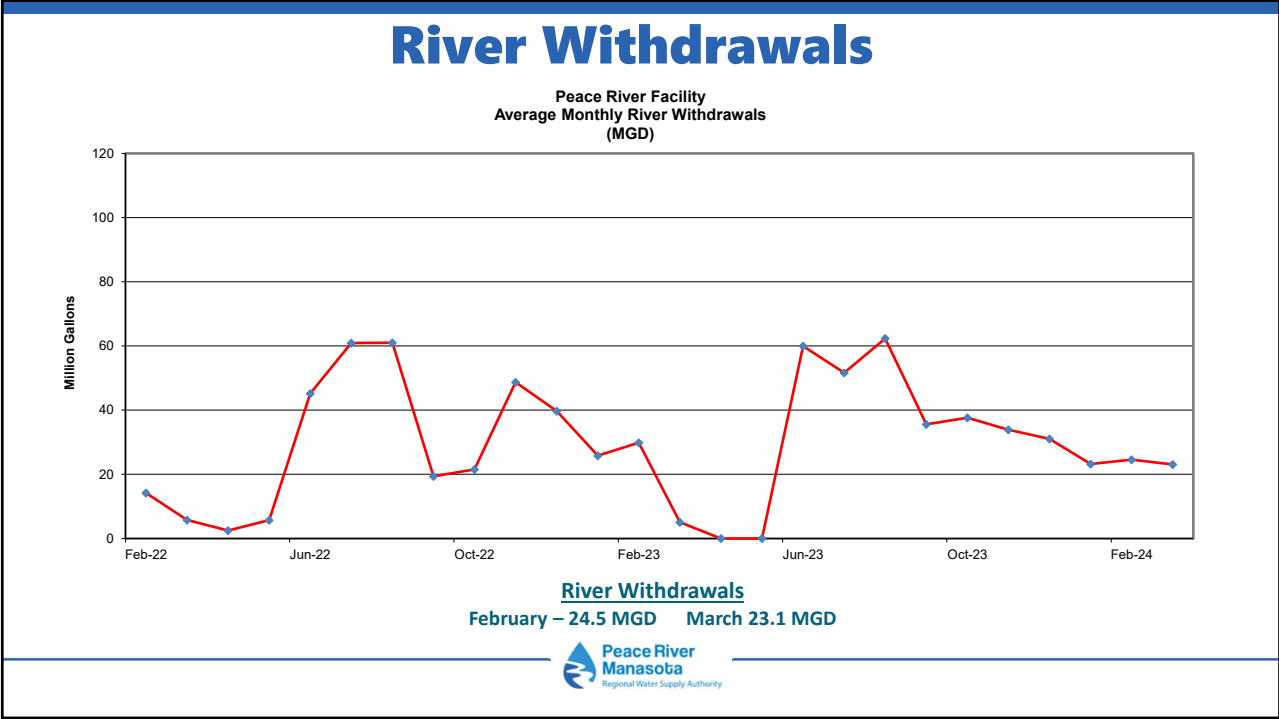
PEACE RIVER BASIN AVERAGE RAINFALL



2



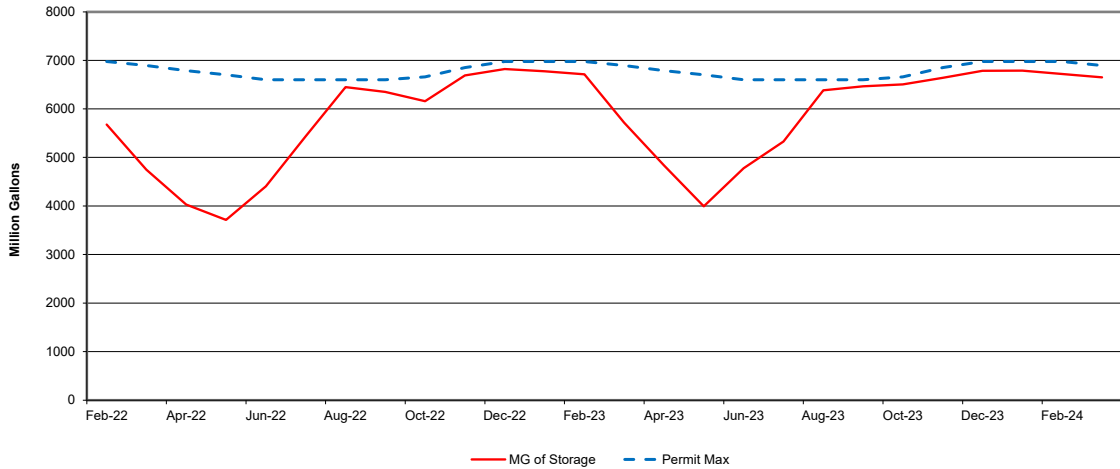
3



4

Surface Water Storage

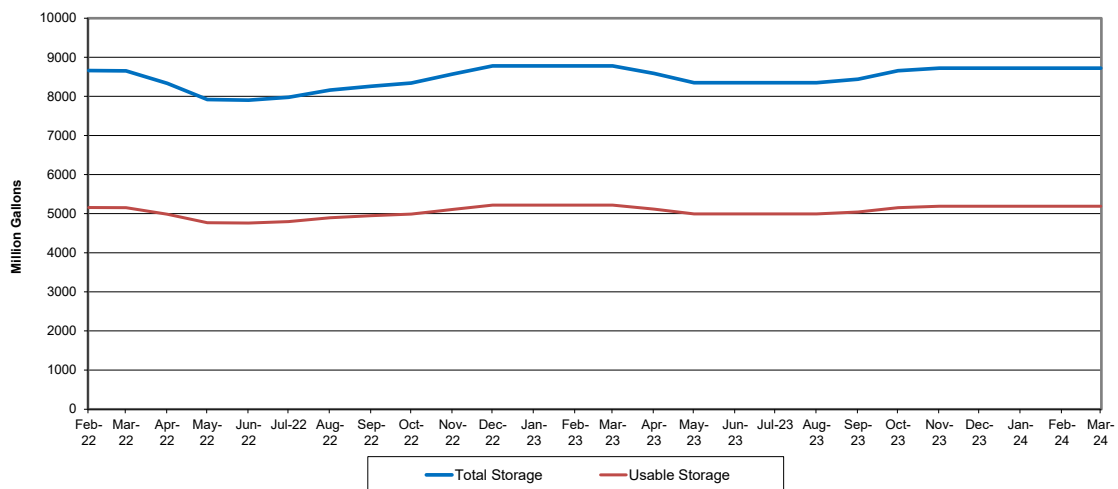
Peace River Facility Reservoir System Storage



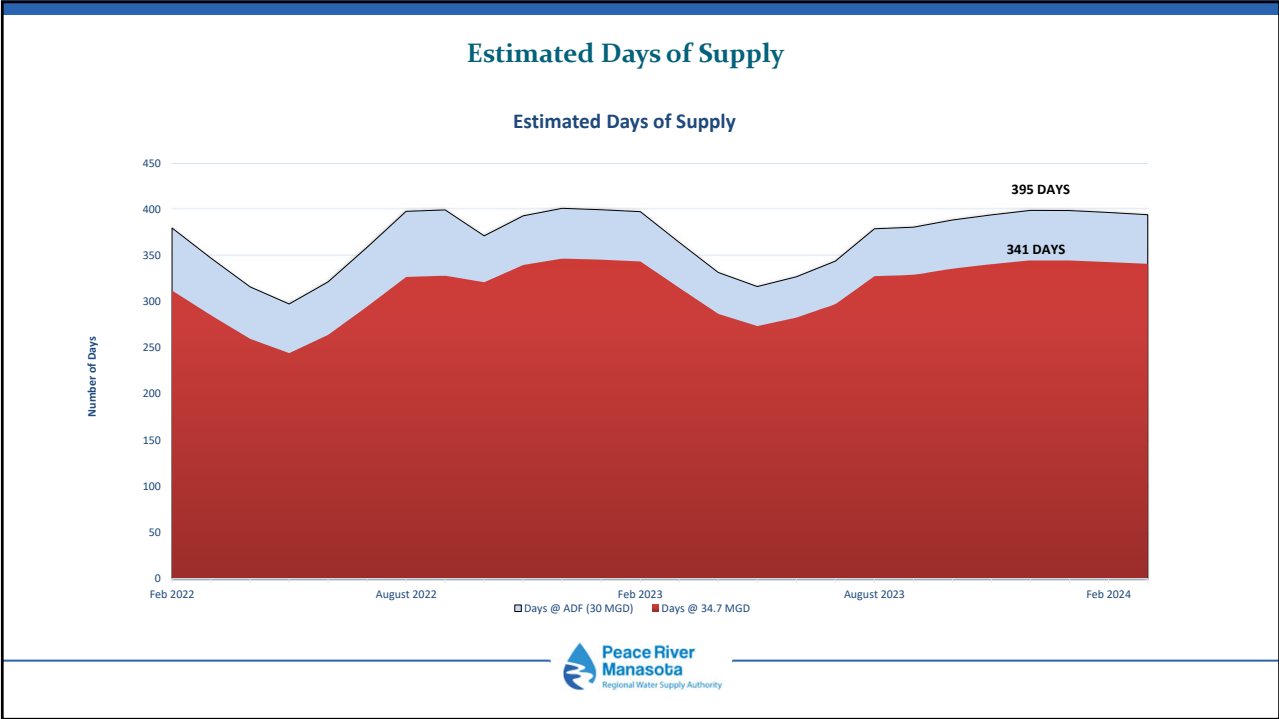
5

ASR Storage

Peace River Facility ASR System Storage




6



7

Regional Water Production and Use February 2024

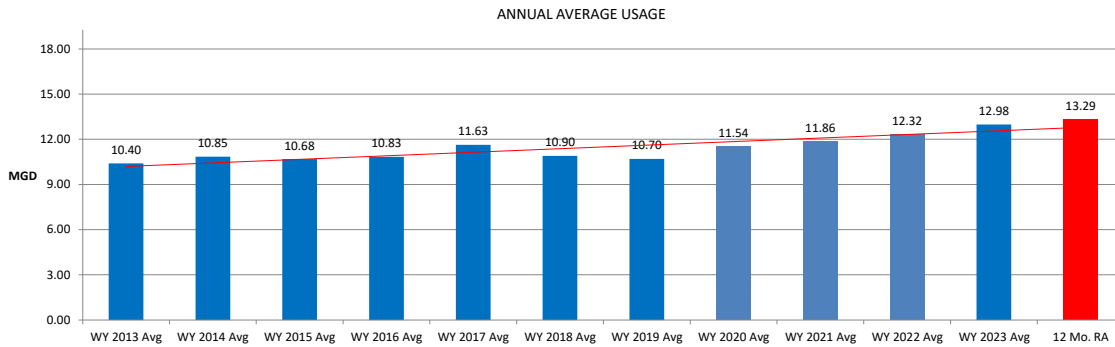


Source	Capacity [MGD]	FEB 2024 [MGD]
Authority System	34.70	28.63
County & City Facilities	69.97	55.84
Total Capacity & Production	104.7	84.47
Export to Non Authority Customers	NA	3.43
Authority Customer Total Water Use	104.7	81.04

8

Charlotte County

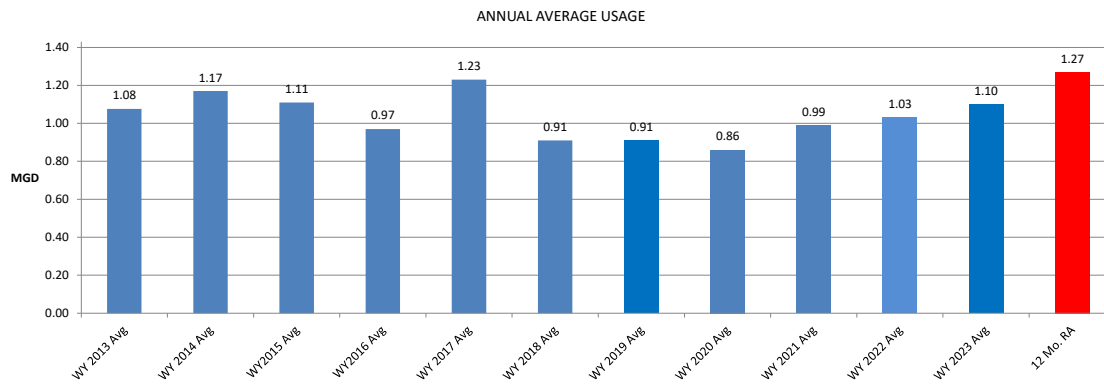
SOURCE	CAPACITY [MGD]	FEBRUARY 2024 [MGD]	% UTILIZED
Peace River Facilities	16.10	12.65	76%
Charlotte Self Supply	3.17	0.89	25%
TOTAL	19.27	13.53	68%



9

Desoto County

SOURCE	CAPACITY [MGD]	FEBRUARY 2024 [MGD]	% UTILIZED
Peace River Facilities	0.695	1.19	180%
Desoto Self Supply	0.75	0.30	40%
TOTAL	1.425	1.49	109%

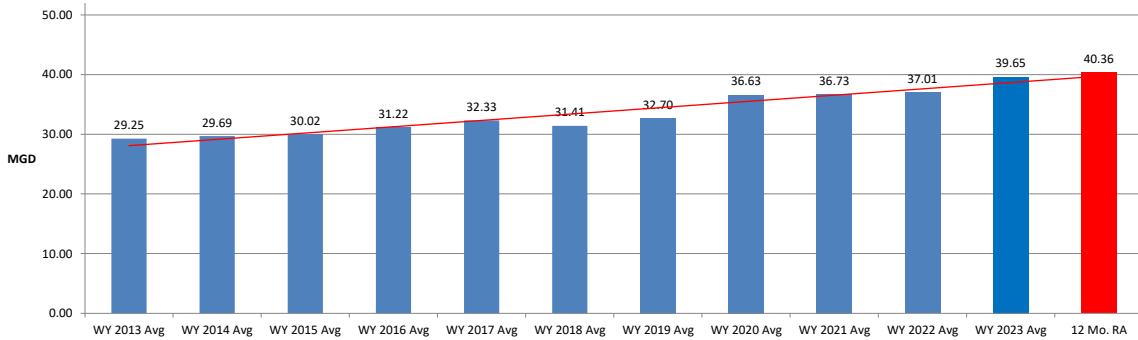


10

Manatee County

SOURCE	CAPACITY [MGD]	FEBRUARY 2024 [MGD]	% UTILIZED
Manatee Self Supply	52.00	38.93	73%
Export to Sarasota Co.	NA	3.86	
Export to Others	NA	3.43	
TOTAL	52.00	46.21	87%

ANNUAL AVERAGE USAGE

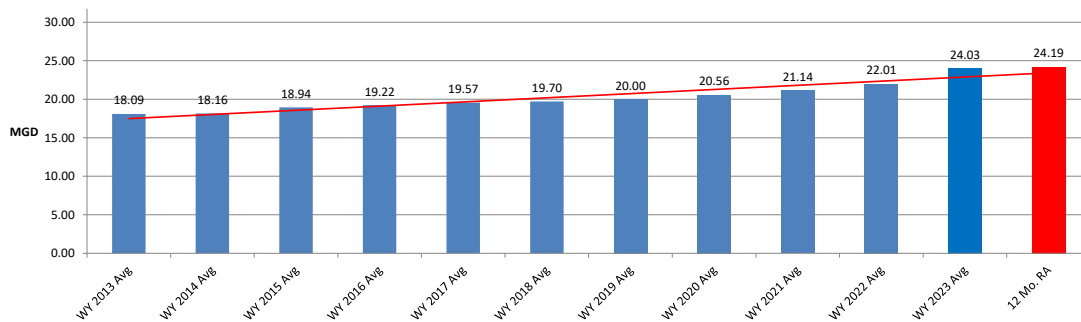


11

Sarasota County

SOURCE	CAPACITY [MGD]	FEBRUARY 2024 [MGD]	% UTILIZED
Peace River Facilities	15.06	13.69	86%
Import from Others	5.00	3.87	79%
County Self Supply	10.52	6.59	63%
TOTAL	33.58	24.15	70%

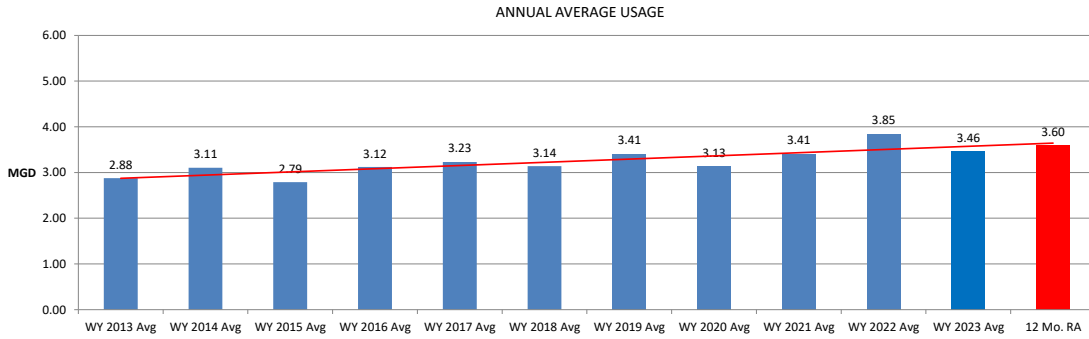
ANNUAL AVERAGE USAGE



12

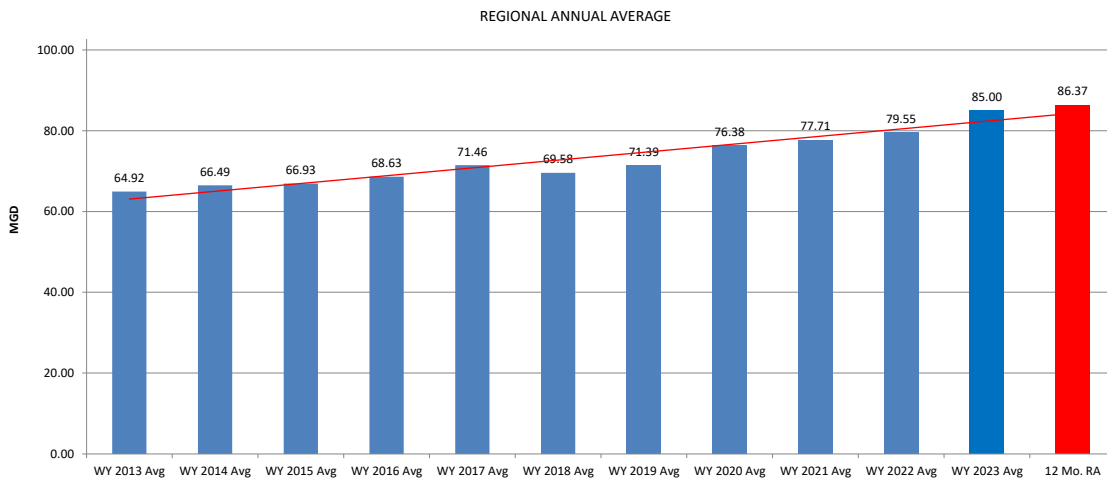
North Port

SOURCE	CAPACITY [MGD]	FEBRUARY 2024 (MGD)	% UTILIZED
Peace River Facilities	2.865	1.09	58%
North Port Self Supply	3.30	2.79	58%
Water Exchanged	N/A	-0.01	
TOTAL	6.165	3.87	57%



13

Regional Demand



14

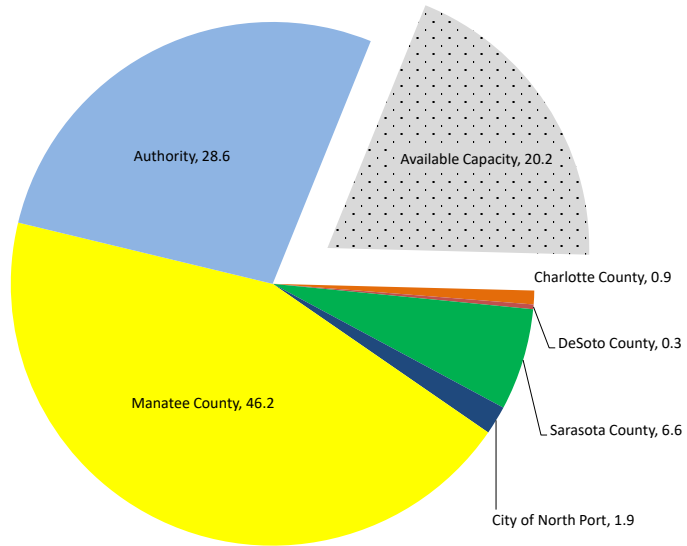
Regional Utilization February 2024

**104.7
MGD
Available**

**84.5
MGD
Used**

**20.20
MGD
Available**

**80.7%
Utilized**



15

Questions?



16