

**PEACE RIVER MANASOTA REGIONAL WATER SUPPLY AUTHORITY**  
**BOARD OF DIRECTORS MEETING**  
*April 3, 2024*

**CONSENT AGENDA**  
**ITEM 6**

**Piggyback on Charlotte County Contract with Sanders Laboratories, Inc.  
for Laboratory Services**

---

**Recommended Action -**

**Motion** to approve piggybacking on Charlotte County’s Contract with Sanders Laboratories, Inc. for Laboratory Services and authorization for the Executive Director to execute an Agreement for these services.

The Authority requires ongoing water quality analytical services associated with our water treatment, storage, distribution, and monitoring operations. The Authority utilizes outside laboratory services for various analytical and permit compliance needs. We have one existing outside laboratory (Benchmark EnviroAnalytical, Inc.) under contract for these services and believe adding a second laboratory is prudent to support continuity in the Authority operations. Staff recommends piggybacking on Charlotte County’s contract with Sanders Laboratories as a back-up to the current lab contract with Benchmark EA. Charlotte County completed a competitive selection process for laboratory services for the County Utilities Department in 2023, selecting Sanders Laboratories, Inc. to provide these services. The Charlotte County’s contract term is effective January 1, 2024, and shall remain in full force and effect through and including September 30, 2025.

Section 189.4221 Florida Statutes, and the Authority’s Procurement Policy allows the Authority, as a Special District to “piggyback” on contracts from other local government, municipality or other Special Districts for commodities and contractual services if the following requirements are met:

- The Authority’s procurement process is similar to that used by the other local government to procure the commodities or services (confirmed)
- The Authority accepts the same terms as the contracting local government (confirmed)
- The contractor will agree to the “piggybacking” (confirmed)

Considering the record of excellent service, local service provider and comparability with historical analytical costs, the staff recommendation is to piggyback on the recent Charlotte County contract with Sanders Laboratories, Inc. for laboratory services.

**Budget Action:** No action needed.

**Attachments**

Tab A: Staff Memorandum Supporting Contract with Sanders Laboratories, Inc.

Tab B: Contract Between Authority and Sanders Laboratories, Inc. for Laboratory Services.

Tab C: Vendor Agreement to Piggy-Back Contract Arrangement.

Tab D: Charlotte County Bid and Contract Documents for Laboratory Services.

**TAB A**

Staff Memorandum Supporting Contract with Sanders Laboratories, Inc.

## **MEMORANDUM**

**DATE:** April 3, 2024  
**TO:** Mike Coates, Executive Director  
**THROUGH:** Richard Anderson, Deputy Director  
**FROM:** Shalina Odegard, Water Resources & Planning Manager  
**RE:** Contract with Sanders Laboratories, Inc. for Laboratory Services

---

### **Recommendation**

Recommend approval for piggybacking on Charlotte County's Contract with Sanders Laboratories, Inc. of Nokomis and Fort Myers, Florida for laboratory services, and authorization for the Executive Director to execute an Agreement for these services.

### **Background**

The Authority utilizes outside laboratory services for various analytical and permit compliance needs. We have one existing outside laboratory (Benchmark EnviroAnalytical, Inc.) under contract for these services and believe adding a second laboratory is prudent to support continuity in the Authority operations. Staff recommends piggybacking on Charlotte County's contract with Sanders Laboratories as a back-up to the current lab contract with Benchmark EA. Access to these services is necessary for our regulatory compliance submittals and it supports our daily water supply operations. During the last twelve (12) years, the Authority has consistently used the "piggyback" contract process for procurement of certified state drinking water laboratory services. All local governments that we have piggybacked with utilize a procurement process similar to the Authority, complying with all requirements of the State of Florida. Using the piggyback process for these contract services saves considerable staff time and has historically yielded very competitive prices, while facilitating consistency in sample analysis, rapid turn-around times, and very good quality service from a local owned company.

Considering the historically excellent service, local service provider and comparability with historical analytical costs, the staff recommendation is to piggyback on the recent Charlotte County contract with Sanders Laboratories, Inc. for laboratory services.

**TAB B**

Contract Between Authority and Sanders Laboratories, Inc. for Laboratory Services





January 24, 2024

Mike Coates, P.G.  
Executive Director for PRMRWSA

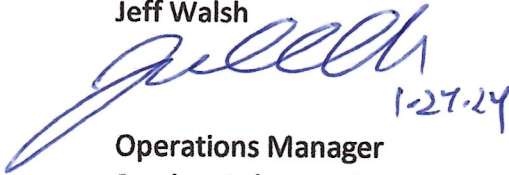
Re: Charlotte County Utilities Bid # 24-113 Piggyback

Mr. Coates,

This letter shall serve as notification that Sanders Laboratories will allow PRMRWSA to piggyback on our Charlotte County Utilities Water Quality Analysis Contract # 24-113.

This document will also serve as a Contract between Sanders Laboratories and PRMRWSA with the Terms and Conditions set forth in CCU Bid # 24-113

Jeff Walsh



Operations Manager  
Sanders Laboratories

Mike Coates, P.G.

Executive Director  
PRMRWSA



# Charlotte County Government

"To exceed expectations in the delivery of public services."

www.CharlotteCountyFL.gov

January 11, 2024

Jeff Walsh  
Sanders Laboratories, Inc.  
1050 Endeavor Court  
Nokomis, FL 34275

**RE: NOTICE OF ACCEPTANCE**

Dear Mr. Walsh:

This letter shall serve as notification of official acceptance by the Board of County Commissioners of award of Bid #24-113, Water Quality Analysis -Utilities – Annual Contract, submitted by Sanders Laboratories, Inc., to provide water testing services, on an "as needed" basis. The acceptance of your Bid Form, properly executed by an author representative of the company, constitutes a binding contract.

Your signature below represents your concurrence with, and acceptance of the terms set forth in this letter and Bid Form submitted by your Company, on October 30, 2023. Accordingly, purchase orders will be issued on an as needed basis throughout the term of the contract. Payment shall be made based on the unit prices in your bid forms and in accordance with the Prompt Payment Act of the Florida State Statutes.

The contract shall become active effective as of January 1, 2024, and shall remain in full force and effect through and including September 30, 2025.

If you have any questions or concerns, please do not hesitate to contact Alisa True, Senior Contract Specialist, at 941.743.1549.

Sincerely,

Kimberly A. Corbett, C.P.M., CPPB  
Senior Division Manager - Purchasing

ACCEPTED:

Date:

1/11/24

Cc: File  
KAC/at

**PURCHASING**

18500 Murdock Circle, Suite 344 | Port Charlotte, FL 33948  
Phone: 941.743.1374 | Fax: 941.743.1384

**TAB C**  
Vendor Agreement to Piggy-Back Contract Arrangement



January 24, 2024

Mike Coates, P.G.  
Executive Director for PRMRWSA

Re: Charlotte County Utilities Bid # 24-113 Piggyback

Mr. Coates,

This letter shall serve as notification that Sanders Laboratories will allow PRMRWSA to piggyback on our Charlotte County Utilities Water Quality Analysis Contract # 24-113.

This document will also serve as a Contract between Sanders Laboratories and PRMRWSA with the Terms and Conditions set forth in CCU Bid # 24-113

Jeff Walsh

Operations Manager  
Sanders Laboratories

Mike Coates, P.G.

Executive Director  
PRMRWSA





# Charlotte County Government

"To exceed expectations in the delivery of public services."

www.CharlotteCountyFL.gov

January 11, 2024

Jeff Walsh  
Sanders Laboratories, Inc.  
1050 Endeavor Court  
Nokomis, FL 34275

**RE: NOTICE OF ACCEPTANCE**

Dear Mr. Walsh:

This letter shall serve as notification of official acceptance by the Board of County Commissioners of award of Bid #24-113, Water Quality Analysis -Utilities – Annual Contract, submitted by Sanders Laboratories, Inc., to provide water testing services, on an "as needed" basis. The acceptance of your Bid Form, properly executed by an author representative of the company, constitutes a binding contract.

Your signature below represents your concurrence with, and acceptance of the terms set forth in this letter and Bid Form submitted by your Company, on October 30, 2023. Accordingly, purchase orders will be issued on an as needed basis throughout the term of the contract. Payment shall be made based on the unit prices in your bid forms and in accordance with the Prompt Payment Act of the Florida State Statutes.

The contract shall become active effective as of January 1, 2024, and shall remain in full force and effect through and including September 30, 2025.

If you have any questions or concerns, please do not hesitate to contact Alisa True, Senior Contract Specialist, at 941.743.1549.

Sincerely,

Kimberly A. Corbett, C.P.M., CPPB  
Senior Division Manager - Purchasing

ACCEPTED:

Date:

1/11/24

Cc: File  
KAC/at

**PURCHASING**

18500 Murdock Circle, Suite 344 | Port Charlotte, FL 33948  
Phone: 941.743.1374 | Fax: 941.743.1384



# Charlotte County Government

"To exceed expectations in the delivery of public services."

[www.CharlotteCountyFL.gov](http://www.CharlotteCountyFL.gov)

January 19, 2024

Peace River Manasota Regional Water Supply Authority  
8998 SW County Road 769  
Arcadia, FL 34269

Attn: Shalina Odegard

Dear Ms. Odegard:

Per your request, please accept this letter as authorization from Charlotte County for the Peace River Manasota Regional Water Supply Authority to "piggyback" Bid #24-113, Water Quality Analysis – Utilities - Annual Contract. It is understood that Peace River Manasota Regional Water Supply Authority will establish its own contract with the successful bidder(s), place its own orders, be invoiced therefrom and make its own payments to the successful bidder in accordance with the terms of the contract established between the Peace River Manasota Regional Water Supply Authority and the successful bidder. It is also hereby mutually understood and agreed that Charlotte County is not a legally bound party to any contractual agreement made between a successful bidder and any local entity other than Charlotte County Board of County Commissioners.

If you have any questions, please feel free to contact the Charlotte County Purchasing Division at 941-743-1374.

Sincerely,

*Alisa True for*

Kimberly A. Corbett, C.P.M., CPPB  
Senior Division Manager – Purchasing

/at

## **PURCHASING**

18500 Murdock Circle, Suite 344 | Port  
Charlotte, FL 33948  
Phone: 941.743.1374 | Fax: 941.743.1384

**TAB D**  
Charlotte County Bid and Contract Documents for Laboratory Services



# Charlotte County Government

"To exceed expectations in the delivery of public services."

www.CharlotteCountyFL.gov

January 11, 2024

Jeff Walsh  
**Sanders Laboratories, Inc.**  
1050 Endeavor Court  
Nokomis, FL 34275

RE: **NOTICE OF ACCEPTANCE**

Dear Mr. Walsh:

This letter shall serve as notification of official acceptance by the Board of County Commissioners of award of Bid #24-113, Water Quality Analysis -Utilities – Annual Contract, submitted by Sanders Laboratories, Inc., to provide water testing services, on an "as needed" basis. The acceptance of your Bid Form, properly executed by an author representative of the company, constitutes a binding contract.

Your signature below represents your concurrence with, and acceptance of the terms set forth in this letter and Bid Form submitted by your Company, on October 30, 2023. Accordingly, purchase orders will be issued on an as needed basis throughout the term of the contract. Payment shall be made based on the unit prices in your bid forms and in accordance with the Prompt Payment Act of the Florida State Statutes.

The contract shall become active effective as of January 1, 2024, and shall remain in full force and effect through and including September 30, 2025.

If you have any questions or concerns, please do not hesitate to contact Alisa True, Senior Contract Specialist, at 941.743.1549.

Sincerely,

Kimberly A. Corbett, C.P.M., CPPB  
Senior Division Manager - Purchasing

ACCEPTED:

  
Date: 1/11/24

Cc: File  
KAC/at

## PURCHASING

18500 Murdock Circle, Suite 344 | Port Charlotte, FL 33948  
Phone: 941.743.1374 | Fax: 941.743.1384





Charlotte County Purchasing Division  
18500 Murdock Circle, Suite 344  
Port Charlotte, Florida 33948-1094

Phone 941.743.1378  
Fax 941.743.1384

## NOTICE OF AVAILABILITY OF BID SPECIFICATIONS

REQUEST FOR BIDS  
CHARLOTTE COUNTY, FLORIDA

The County of Charlotte will be receiving sealed bids at the Purchasing Division, Suite 344, Charlotte County Administration Center, 18500 Murdock Circle, Port Charlotte, FL 33948-1094, for:

**BID NO. 2024000113**  
**WATER QUALITY ANALYSIS – UTILITIES - ANNUAL CONTRACT**

This is an annual contract for the procurement of water testing services to be utilized by the Charlotte County Utilities Department.

There will be no Pre-Bid Conference for this Project. Bidders are requested to email any project related questions to [Alisa.True@CharlotteCountyFl.gov](mailto:Alisa.True@CharlotteCountyFl.gov).

**BID OPENING: 2:00 p.m., OCTOBER 8, 2023**  
**PURCHASING DIVISION CONFERENCE ROOM**

Bid Documents may be obtained by accessing the Charlotte County Purchasing Division's website at <https://purchasingbids.charlottecountyfl.gov> under "Purchasing Bids Online", document number 241132. Any questions can be answered by contacting Alisa L. True, CPPB, Senior Contract Specialist at 941.743.1549 or email: [Alisa.True@CharlotteCountyFl.gov](mailto:Alisa.True@CharlotteCountyFl.gov).

**OPTIONAL ELECTRONIC BID SUBMISSIONS:** If your firm would like to submit your bid electronically, please visit <http://bit.ly/3TYAyKa> and follow given instructions.

Notice of Availability  
Posted: October 26, 2023



Charlotte County Purchasing Division  
18500 Murdock Circle, Suite 344  
Port Charlotte, Florida 33948-1094

Phone 941.743.1378  
Fax 941.743.1384

### STATEMENT OF NO BID

If you **do not** intend to bid on this commodity/service, please return this form to the above address immediately. If this statement is not completed and returned, your company may be deleted from the Charlotte County Vendors' list for this commodity/service.

We the undersigned, have declined to bid on requested commodity/service **BID #2024000113, WATER QUALITY ANALYSIS – UTILITIES – ANNUAL CONTRACT**, for the following reason(s):

- \_\_\_\_\_ Specifications too "tight", i.e. geared toward one brand or manufacturer only (explain below).
- \_\_\_\_\_ Insufficient time to respond to the Invitation to Bid.
- \_\_\_\_\_ We do not offer this product or service.
- \_\_\_\_\_ Our schedule would not permit us to perform.
- \_\_\_\_\_ Unable to meet bond/insurance requirements.
- \_\_\_\_\_ Unable to meet specifications.
- \_\_\_\_\_ Specifications are unclear (explain below).
- \_\_\_\_\_ Remove us from your vendors' list for this commodity/service.
- \_\_\_\_\_ Other (specify below).

Remarks: \_\_\_\_\_  
\_\_\_\_\_  
\_\_\_\_\_

Company Name: \_\_\_\_\_

Contact Person (typed or printed): \_\_\_\_\_

Contact Person Signature: \_\_\_\_\_

Phone: \_\_\_\_\_ Fax: \_\_\_\_\_

E-Mail Address: \_\_\_\_\_

**Note:** Statement of No Bid may be emailed to [Alisa.True@CharlotteCountyFL.gov](mailto:Alisa.True@CharlotteCountyFL.gov).

**TABLE OF CONTENTS**  
**WATER QUALITY ANALYSIS – UTILITIES – ANNUAL CONTRACT**  
**BID NO. 2024000113**

<b>Notice of Availability</b>	<b>1</b>
<b>"No Bid" Response Page</b>	<b>2</b>
<b>Table of Contents</b>	<b>3</b>
<b>INSTRUCTIONS TO BIDDERS</b>	<b>4-8</b>
<b>TECHNICAL SPECIFICATIONS &amp; CONDITIONS</b>	<b>9-15</b>
<b>INSURANCE REQUIREMENTS</b>	<b>16-17</b>
<b>SAFETY AND HEALTH REQUIREMENTS</b>	<b>18-19</b>
<b>BID FORM</b>	<b>20-26</b>
<b>ATTACHMENTS A</b>	<b>27</b>

**INSTRUCTIONS TO BIDDERS**  
**WATER QUALITY ANALYSIS – UTILITIES – ANNUAL CONTRACT**  
**BID NO. 2024000113**

**IB-01 QUALIFICATIONS OF BIDDERS:** It is the intent of the County to award this contract to the lowest responsive, responsible bidder, qualified by experience and solvency, with proven reliability and the ability to supply all items/services within a reasonable time frame acceptable to Charlotte County. Bidder may be required to supply information in writing at the request and discretion of the County prior to award of bids, in order to verify above requirements.

**IB-02 GENDER DESIGNATION:** The County and the Contractor are treated throughout these Documents as if each were of the singular number and masculine gender.

**IB-03 EXAMINATION OF DOCUMENTS/SITE:** Prior to the submission of a bid form, bidders shall carefully examine the bid package, including the Request for Bids, Instructions to Bidders, Technical Specifications & Conditions, Special Provisions, General Provisions, Insurance Requirements, Bid Form and all other related bid documents, including all modifications thereof, incorporated in the bid package, plus fully informing themselves as to all existing conditions and limitations that affect the work to be performed under this contract.

Discrepancies, omissions, or questions about the intent of the documents should be submitted to the Purchasing Division in written form as a request for interpretation no later than five (5) calendar days prior to bid opening (or shall be verbally addressed at the pre-bid conference, if applicable).

Interpretations of any of the bid documents or the project will be in the form of a written addendum to the documents which will be posted on the purchasing website. Receipt by each bidder of any addenda must be acknowledged on the bid form, indicating the addendum number and date of issue, therein becoming a part of the contract. No oral explanations shall be binding. The County will attempt to notify all prospective bidders of addenda issued to the bidding documents; however, it shall be the responsibility of the bidder, prior to submitting their bid, to determine if addenda were issued, acknowledging and incorporating it into their bid.

Examination of Site: Prior to submitting a bid form, each bidder shall examine the site and all conditions thereon. All bid forms shall be presumed to include all such existing conditions as may affect any work to be done on this project. Failure to familiarize himself with such conditions will in no way relieve the successful bidder from the necessity of furnishing any materials or performing any work that may be required to complete the work in accordance with the drawings and Specifications.

**IB-04 PREPARATION AND SUBMISSION OF BID FORM REQUIREMENTS:** Bids shall be submitted on the bid form supplied by the County, or duplication thereof and attached thereto, or as specified. Bidders shall acknowledge receipt of any addenda received during the bid period. Any expense incurred in making bids is to be borne by the Bidder.

Each bid must give the full business address of the bidder and state whether bidder is an individual, corporation or partnership. Bid Forms by a corporation must be signed in the name of the corporation, followed by the original signature and designation of the officer or other person authorized to bind the corporation. Bid Forms by partnerships shall show the names of all partners. The partnership title shall follow the original signature of each partner.

Any erasures or other corrections in the bid form must be explained or noted over the signature of the bidder. Bid Forms containing any conditions, omissions, unexplained erasures, alterations, or irregularities of any kind may be rejected by the County.

Bid documents shall be submitted sealed. The package containing the bid must be clearly marked with the bid number and the name and business address of the bidder. Bids not received by the established bid opening shall **not** be considered and will be returned.

Bid Guarantee - The bid shall be signed where indicated guaranteeing that the bidder will not withdraw its bid for a period of 60 days after the scheduled time for opening of bids.

**IB-05 WITHDRAWAL OF BIDS:** Bids may be withdrawn by request of the bidder prior to the scheduled opening. Error or negligence on the part of the bidder in preparing the bid confers no right for withdrawal of the bid after it has been opened.

**IB-06 BID TABULATIONS:** In accordance with Florida Statutes, Section 119(1)(b)2: Sealed bids, proposals, or replies received by an agency pursuant to a competitive solicitation are exempt from s. [119.07\(1\)](#) and s. 24(a), Art. I of the State Constitution until such time as the agency provides notice of an intended decision or until 30 days after opening the bids, proposals, or final replies, whichever is earlier. Those bidders interested in receiving a copy of the results of this bid once they are released may do so by visiting our website at <https://purchasingbids.charlottecountyfl.gov> under "Purchasing Bids Online", Document Number 241134. No information regarding the submittal will be divulged over the telephone.

**IB-07 RESERVED RIGHTS:** The County reserves the right to accept or reject any and/or all bids, to waive irregularities and technicalities, and to request resubmission of bids. Also, the County reserves the right to accept all or any part of the bid and to increase or decrease quantities to meet additional or reduced requirements of the County. Any sole response received may be rejected by the County depending on available competition and timely needs of the County.

**IB-08 FORM OF CONTRACT:** The submitted Bid Form signed by the bidder, together with complete bid package furnished by the County, shall constitute a binding contract. The bidder shall be required to perform according to the bidder's submitted Bid Form and the County's bid package when a purchase order signed by the Senior Division Manager - Purchasing or his/her designee is transmitted to bidder. The transmitted purchase order shall serve as both a Notice of Acceptance and Notice to Proceed to the bidder. Failure to comply with the conditions set forth in the purchase order shall be deemed a breach of contract subjecting the bidder to forfeiture of the bid bond or other posted security and other possible penalties.

**IB-09 NOTICE TO PROCEED/DELIVERY:** After award of bid, a notice to proceed/purchase order shall be issued bearing the terms of the contract/delivery. Upon receipt of purchase order, successful bidder/Contractor shall acknowledge receipt of same by either fax or mail and shall commence processing of order so that the agreed upon delivery date will be satisfied.

**IB-10 PAYMENT:** Request for payment must be submitted to the Charlotte County Purchasing Division on a form approved by the County. All invoices will be paid in accordance with the Local Government Prompt Payment Act (F.S. 218.74).

**IB-11 PERFORMANCE EVALUATION:** At the end of the contract, if awarded, the receiving department will evaluate the successful bidder's performance. This evaluation will become public record.

**IB-12 ARITHMETIC DISCREPANCIES:** For the purpose of initial evaluation of bids, the following will be utilized in resolving arithmetic discrepancies found on the face of the bid forms submitted by the bidder:

- A. Obviously misplaced decimal points will be corrected.
- B. In case of discrepancy between unit price and extended price, the unit price will govern. Apparent errors in extension will be corrected.
- C. Apparent errors in addition of lump sum and extended prices will be corrected.

For the evaluation purposes, the County will proceed on the assumption that the bidder intends its bid be evaluated on the basis of the unit prices, extensions, and totals arrived at by resolution of arithmetic discrepancies (above). The bid will be so reflected on the bid tabulation.

**IB-13 DESCRIPTIVE INFORMATION:** Unless otherwise specifically provided in the documents, all equipment, materials and articles incorporated in the work covered by this bid are to be new and of the most suitable grade for the purpose intended. Unless specifically provided in the bid documents, references to equipment, material, article or patented process, by trade name, make or catalogue number, shall be regarded as establishing a standard of quality and shall not be construed as limiting competition. If the bidder wishes to make a substitution, the bidder shall furnish the name of the manufacturer, the model number, and other identifying information necessary to aid the County in evaluating the substitution. Substitutions are subject to County approval. Substitutions shall be approved only if determined by the County to be equivalent to the specifications. Substitutions are subject to disqualification if not approved by the County.

**IB-14 REGULATIONS:** It shall be the responsibility of each bidder to assure compliance with any OSHA, EPA, and/or other federal, state, or local statutes, ordinances, rules, regulations or other requirements, as each may apply.

Bidder must be authorized to transact business and be properly licensed in the State of Florida. Laws and regulations of the State of Florida and ordinances and regulations of Charlotte County will apply to any resulting contract.

**IB-15 CODE OF ETHICS:** With respect to this bid, if any bidder violates or is a party to a violation of the State of Florida/Florida Statutes, Chapter 112, Part III, Code of Ethics for Public Officers and Employees, such bidder may be disqualified from furnishing the goods or services for which the bid is submitted and shall be further disqualified from submitting any future bids for goods or services for Charlotte County.

**IB-16 COLLUSION:** By offering a submission to this invitation, the bidder certifies he has not divulged to, discussed or compared his bid with other bidders and has not colluded with any other bidder or parties to this bid whatsoever. Also, bidder certifies, and in the case of a joint bid each party thereto certifies as to his own organization, that in connection with this bid:

- any prices and/or cost data submitted have been arrived at independently, without consultation, communication, or agreement, for the purpose of restricting competition, as to any matter relating to such prices and or cost data, with any other bidder or with any competitor;
- any prices and/or cost data quoted for this bid have not been knowingly disclosed by bidder and will not knowingly be disclosed by bidder prior to the scheduled opening directly or indirectly to any other bidder or competitor;
- no attempt has been made or will be made by the bidder to induce any other person or firm to submit or not to submit a bid for the purpose of restricting competition;
- the only person or persons interested in this bid, principal or principals is/are named therein and that no person other than therein mentioned has any interest in this bid or in the contract to be entered into; and
- no person or agency has been employed or retained to solicit or secure this contract upon an agreement or understanding for a commission, percentage, brokerage, or contingent fee excepting bona fide employees or established commercial agencies maintained by the Purchaser for the purpose of doing business.

**IB-17 SUBCONTRACTORS:** Bidders are to complete the attached Subcontractors form. This form must be completed and included with the bid form. If bidder does not have a subcontractor, insert "to be determined". When source or subcontractor is determined, selection will be subject to County approval.

**IB-18 DRUG FREE WORKPLACE FORM:** It is strongly suggested that the attached Drug Free Workplace Form be signed and returned to this office with the bid. In the event of a tie bid, the presence of a valid and accurate form may be used as a basis for awarding the Contract.

**IB-19 PUBLIC ENTITY CRIMES:** In accordance with Florida Statutes Sec. 287.133(2)(a), "A person or affiliate who has been placed on the convicted vendor list following a conviction for a public entity crime may not submit a bid on a contract to provide any goods/services to a public entity, may not submit a bid on a contract with a public entity for construction or repair of a public building or public work, may not submit bids on leases of real property to a public entity, may not be awarded or perform work as a Contractor, supplier, subcontractor, or consultant under a contract with any public entity, and may not transact business with any public entity in excess of the threshold amount provided in Section 287.017, for Category Two, for a period of 36 months from the date of being placed on the convicted vendor list".

**IB-20 CANCELLATION/TERMINATION OF CONTRACT:** It is the intent of the County to contract with a bidder who can provide prompt and convenient services. The County shall have the right to cancel, terminate or suspend any awarded contract, in whole or in part, by providing the successful bidder/Contractor 30 days written notice.

It is expressly understood by the County and the bidder that funding for any successive fiscal years of this contract is contingent upon appropriation of monies by the Charlotte County Board of County Commissioners. In the event that funds are not available or are not appropriated, the County reserves the right to terminate any awarded contract. The County will be responsible for payment of any outstanding invoices and work completed by the successful bidder/Contractor prior to such termination.

Pursuant to Section 287.135(3)(a)4 of the Florida Statutes, Charlotte County may, at its sole option, terminate any Agreement valued at \$1,000,000 or more if the Contractor is found to have submitted a false certification, has been placed on the *Scrutinized Companies with Activities in Sudan List*, or the *Scrutinized Companies with Activities in the Iran Petroleum Energy Sector List*, or has been engaged in business operations in Cuba or Syria or a boycott of Israel.

Pursuant to Section 287.135(3)(b) of the Florida Statutes, Charlotte County may, at its sole option, terminate any Agreement in any amount if the Contractor is found to have been placed on the *Scrutinized Companies that Boycott Israel List*, or is engaged in a boycott of Israel.

**IB-21 INDEMNITY:** After notification of award, the successful bidder shall indemnify and hold harmless the County, its officers, employees, agents and volunteers, from action, including any court costs or attorneys' fees arising from, or as a result of, any act or omission by bidder, its officers, employees, licensees, invitees, Contractors, agents or assignees, in the performance of the services and/or the delivery of goods for which the resulting agreement was entered into. Bidder agrees that the first ten dollars (\$10.00) of compensation received under the resulting agreement represents specific consideration for the indemnification obligation. Nothing in the award, resulting agreement, contract or Purchase Order shall be deemed to affect the rights, privileges and immunities of the County as set forth in Florida Statute 768.28.

**IB-22 TAXES:** Charlotte County is exempt from Federal Excise and State Sales Taxes. The bidder shall assume liability for Local, State, or Federal Tax that is applicable to the work.

**IB-23 EQUAL EMPLOYMENT OPPORTUNITY:** Charlotte County, in accordance with the provisions of Title VI of The Civil Rights Act of 1964 (78 Stat. 252) and the Regulations of the Dept. of Commerce, issued pursuant to such Act, hereby notifies all bidders that it will affirmatively ensure that in any contract entered into pursuant to this bid, minority business enterprises will be afforded full opportunity to submit bids and will not be discriminated against on the grounds of race, color or national origin in consideration for an award.

All bidders are hereby notified that the successful bidder (Contractor) must and shall comply with the Civil Rights Act of 1964, the Age Discrimination in Employment Act, the Rehabilitation Act of 1973, the Americans with Disabilities Act and the Florida Civil Rights Act, all as amended. Specifically, Contractor agrees that:

- No person shall, on the grounds of race, color, sex, religion, age, disability, national origin or marital status, be excluded from participation in, be denied the benefits of, or be otherwise subjected to discrimination under any program, activity or service funded through this Contract.
- Contractor will not discriminate against any employee or applicant for employment because of race, color, religion, sex, age, disability, national origin or marital status. Contractor agrees to post in a conspicuous place, available to employees and applicants for employment, notices setting forth the provisions of this non-discrimination clause.
- Contractor will, in all solicitations or advertisements regarding program activities, services provided or applications for employment, state that all qualified applicants will receive consideration for services or employment without regard to race, color, religion, sex, age, disability, national origin or marital status.
- County may require Contractor to submit reports as may be necessary to indicate non-discrimination. County officials will be permitted access to Contractor's books, records, accounts and other sources of information and its facilities as may be pertinent to ascertain compliance with non-discrimination laws.

It is expressly understood that County shall have the right to terminate the Contract upon receipt of evidence of discrimination.

**IB-24 ASSIGNMENT:** This agreement, or any interest herein, shall not be assigned, transferred or otherwise encumbered, under any circumstances by Contractor without the prior written consent of the County.

**IB-25 UNAUTHORIZED ALIEN WORKERS:** Charlotte County will not intentionally award publicly funded contracts to any Contractor who knowingly employs unauthorized alien workers, constituting a violation of the employment provisions contained in 8 U.S.C. Section 1324a [Section 274A of the Immigration and Nationality Act ("INA")]. The County shall consider employment by any Contractor of unauthorized aliens a violation of Section 274A of the INA. Such violation by the Contractor of the employment provisions contained in Section 274A of the INA shall be grounds for termination of this Agreement by the County. In addition, pursuant to Section 448.095 of the Florida Statutes, all persons or firms entering into contracts with Charlotte County are required to register with, and use, the E-Verify system of the U.S. Department of Homeland Security to electronically verify the employment eligibility of all newly hired employees. The County may terminate this Agreement for failure on the part of the Contractor to use E-Verify. Contract termination for failure to use E-Verify is not considered a breach of contract pursuant to s. 448.095(2)(c)3, *Fla. Stat.*

**IB-26 EMPLOYEE BACKGROUND CHECK:** If an owner, except a stockholder in a publicly traded corporation, or an employee of the Contractor has been convicted of any offenses requiring registration as a sexual offender or sexual predator, regardless of the location of conviction, the Contractor shall ensure that the offender's or predator's work on the project is consistent with the terms of his probation and registry requirements.

**IB-27 PUBLIC RECORDS CLAUSE TO CONTRACTORS “ACTING ON BEHALF OF THE COUNTY”:** Pursuant to Section 119.0701 of the Florida Statutes, Contractors acting on behalf of the County must comply with the public records laws, specifically: a) keep and maintain public records required by the County to perform the contracted services; b) upon request from the County’s custodian of public records, provide the County with a copy of the requested records or allow the records to be inspected or copied within a reasonable time at a cost that does not exceed the cost provided in Chapter 119 of the Florida Statutes or as otherwise provided by law; c) ensure that public records that are exempt or confidential from public records disclosure requirements are not disclosed except as authorized by law for the duration of the contract term and following completion of the contract; and d) upon completion of the contract, keep and maintain all public records required by the County to perform the service, and meet all applicable requirements for retaining public records.

**IF THE CONTRACTOR HAS QUESTIONS REGARDING THE APPLICATION OF CHAPTER 119, FLORIDA STATUTES, TO THE CONTRACTOR’S DUTY TO RETAIN AND PROVIDE PUBLIC RECORDS RELATING TO THIS CONTRACT, CONTACT THE COUNTY’S CUSTODIAN OF PUBLIC RECORDS AT (941) 743-1441, E-MAIL TO RECORDS@CHARLOTTECOUNTYFL.GOV, 18500 MURDOCK CIRCLE, BLDG. B, Suite 109, PORT CHARLOTTE, FLORIDA 33948.**



**TECHNICAL SPECIFICATIONS & CONDITIONS  
WATER QUALITY ANALYSIS – UTILITIES - ANNUAL CONTRACT  
BID NO. 2024000113**

**TS-01 INTENT:** The intent of these specifications is to describe the County's requirements, including all labor, equipment and transportation for the proper execution of the work as specified. Work described in words which, when applied, have a well-known technical or trade meaning shall refer to such recognized standards. It is understood and agreed that the Bidder is fully responsible for informing himself as to the nature and location of the work, the character, quality, and quantity of the materials to be encountered, the type of equipment and facilities needed during the prosecution of the work; the general and local conditions and all other matters that can in any manner affect the performance of the work. No verbal agreement or conversation with any officer, agent, or employee of the County, before or after execution of the work, shall affect or modify any of the terms or obligations contained herein.

**TS-02 DEFINITIONS:**

A. Work: The term "Work" when referring to the Contractor and/or Subcontractor, includes labor, materials, equipment, and/or transportation necessary to complete the work.

B. Subcontractor: The term "Subcontractor" as employed herein, includes only those having a direct contact with the Contractor and includes one who furnishes material and/or labor to according to these specifications. Bidders are required to complete the Source of Supply/Subcontractor's Form, attached, and include the Florida Department of Health (DOH) laboratory certification in the categories of metals, nutrients, demands, organic extractables, general parameters I & II, microbiology, pesticides/herbicides, PCB's, purgeable organic, EPA 40CFR Part 258 - Appendix I and II. Also required is the DOH Performance Evaluation (assessment) for Drinking Water and Water Pollution and the NELAC (National Environmental Laboratory Accreditation Conference) Institute (TNI) certification. This information shall be stapled or clipped to the Subcontractor's form and submitted along with the sealed bid. Subcontractors are subject to approval by Charlotte County.

**TS-03 CERTIFICATIONS:** All analyses shall comply with TNI and have the capability of performing all required tests within the standardized parameters set forth by FDEP and DOH.

Certifications required for the prosecution of the work shall be secured and paid by the Contractor. The Contractor shall give all notices and comply with all laws, ordinances, rules, and regulations bearing on the conduct of the work. If the Contractor performs any work knowing it to be contrary to applicable laws, ordinances, rules, and regulations, he shall bear all costs arising from the performance of that work.

**TS-04 TERM OF CONTRACT:** The term of the Contract shall be from January 1, 2024 through and including September 30, 2025, with option to renew for two (2) additional one-year terms, at the same prices, terms and conditions, by mutual consent.

Previous contract pricing can be obtained by accessing our website at <https://purchasingbids.charlottecountyfl.gov> under Purchasing Bids Online, Search History. The previous Contract number for this project is **23-058** and is entitled "**Water Quality Analysis – Annual Contract**".

**TS-05 GENERAL CONDITIONS:** Except in an emergency endangering life or property, no extra work or change shall be made unless a written order is issued by the County. No claim for an addition to the Contract sum shall be valid unless approved in writing by the County.

All time limits specified herein are of the essence. If the Contractor refuses or fails to complete the work within the time specified or any extension thereof, the County may terminate the Contractor's right to proceed. In such event, the County may pursue the work and prosecute same to completion by any means the County finds suitable. In such case the Contractor will be liable for excess costs occasioned thereby. If the County does not terminate the right to proceed, the Contractor will continue the work, in which event, actual damages will be impossible to determine. In lieu thereof, the Contractor may be required to pay the County liquidated damages in an amount that may be up to two (2) times the cost of each test scheduled during each calendar day of delay. The same stipulation shall pertain to any delay in providing the results for any test due in a specified period of time. Liquidated damages will be based on the cost incurred by the County in suffering a delay, including all civil penalties, regulatory fines, and any other expense that was incurred as a result of the Contractor's failure to be prompt.

The County may withhold payment due to loss resulting from:

- defective test results not remedied.
- claims filed or reasonable evidence indicating probable filing of claims.

Any new test that may be required by local, state, and/or federal agencies, that the laboratory is equipped and qualified to perform but is not on the current list of required tests, shall be billed at the laboratory's established rate less the accepted discount rate agreed upon in the current Contract. Should a new test be one that the Contractor is not equipped and/or qualified to perform, the County shall have these tests performed elsewhere until such time the Contractor's laboratory has made arrangements to perform the test. Should the laboratory decide to not become equipped/qualified to perform the test, the County shall exercise its prerogative to have the test performed in such a manner as is in the best interest of the County.

Due to the short holding time of some analysis requirements, the Contractor will need to respond no later than 24 hours upon notification by County.

The County, in its sole discretion, may choose to use the services of the laboratory to provide water quality analysis under the Florida Stationary Tank Rule. Prices submitted for this should consider groundwater testing on tanks used primarily for petroleum products and pesticide storage.

All samples shall be retained for a minimum of 30 days after the final analytical results are submitted in order to assure that re-analysis is possible if requested by the County. If Contractor fails to retain sample for re-analysis for 30 days, he will not charge County for re-sampling costs.

**Reports shall be submitted to the County no later than the 7th following the end of the reporting period for each sampling event. Deep Well Analysis reports must be submitted no later than the 5<sup>th</sup> of the month following the sampling event. If Contractor fails to provide analysis within the specified period, the Contractor will be responsible for any fines incurred from the regulatory agencies.**

The sample analysis shall be prepared in electronic format compatible with statistical analysis software formats as required by the County. The format will be established upon execution of the contract and sustained for the contract period.

The successful laboratory shall be required to retain all data developed in connection with this Request for Bid for a period of five (5) years.

**TS-06 CONTAINERS:** The Contractor shall supply sample containers and appropriate shipping containers as required. The containers utilized by CHARLOTTE COUNTY UTILITIES (CCU) must be pre-labeled with the following information: Sample Sites; Required Analysis. Sample containers shall be of virgin material, dedicated shipping coolers and all shipping to and from the designated site in Charlotte County will be the sole responsibility of the Contractor. The Contractor shall pay delivery charges for filled containers. All costs associated with the containers, collection, field parameter testing, and transport will be the sole responsibility of the Contractor. The Contractor shall provide courier service for transport of samples when requested by the County. All sample kits should be received at East Port Laboratory no later than two weeks before the scheduled sampling event to allow for distributing to the appropriate facilities.

Charges shall be invoiced as analyses are performed and the analytical results returned to CCU.

**TS-07 SUBMITTALS:** The following shall be submitted on Bidder's letterhead, utilizing the format indicated below, as an attachment to the Bid Form:

- Submit copies of all current laboratory certifications. The Contractor shall be required to maintain certification as required by the FDEP, Florida Department of Health (DOH), and TNI. Evidence of current certification shall be submitted to the County annually by July first.
- Indicate the length of time the laboratory has been in operation at the current location and specify the previous location if recently relocated.
- Specify at least three (3) current or previous municipalities, counties or state governments that are or have been clients, the length of time they are or were clients and specific services provided to them. Include the name and telephone number of a contact person for each client. The County may utilize this information to verify references.
- Each Bidder shall submit his/her published brochure/catalog of analyses the laboratory is capable of performing. If for any reason the Bidder is not equipped or certified to perform any of the tests currently required by Charlotte County, a separate sheet shall be included listing such tests and how the tests will be performed. List all subcontractors and suppliers that may be used on the form provided herein.

- Each Bidder shall submit a current DOH Performance Evaluation Rating (last two (2) Proficiency rounds) as well as TNI certification for metals, nutrients, demands, organic extractables, general parameters I & II, microbiology, pesticides / herbicides, PCB's, purgeable organic, EPA 40CFR Part 258 (Appendix I and II).
- Each Bidder shall submit a current DOH Performance Evaluation (last assessment) for Drinking Water and Water Pollution.
- Each Bidder shall submit a copy of their current Quality Manual.
- The successful Laboratory shall operate a computer data system that is compatible with the software program operated by Charlotte County (Excel or Access). Bidders shall provide a Flash Drive along with their sealed bid. Flash Drives shall be clearly labeled with contents and their relationship with accompanying reports. Flash Drive shall contain an example of analysis results, relevant custody and quality data.

**TS-08 CCU TREATMENT FACILITY SAMPLING ANALYSES:** Any water or wastewater system that CCU acquires through contract operations or direct purchase shall receive the same price structure for analysis.

A. Requirements for wastewater/water analyses for CCU treatment facilities. The East Port Laboratory, point of contact and central location for kit drop off and samples pick up. There are six (6) Treatment Plants known as:

1. East Port Water Reclamation Facility
2. West Port Water Reclamation Facility
3. Rotonda Water Reclamation Facility
4. Burnt Store Water Reclamation Facility
5. Leachate Treatment Plant
6. Burnt Store Water Treatment Plant

B. The sampling requirements are indicated for each plant in addition to the frequency of testing required by the Utilities' FDEP Operation Permits and Certification.

C. All sampling to be performed by CCU staff except otherwise specified.

**East Port Laboratory:**

1. Monthly TOC testing on lab Reagent water
2. Annual Reagent water testing
  - a. Cadmium
  - b. Chromium
  - c. Copper
  - d. Nickel
  - e. Lead
  - f. Zinc
  - g. Silica

**Wastewater Treatment Plants**

1. East Port Water Reclamation Facility (WRF):
  - a. Quarterly Analysis for Domestic Wastewater Sludge.
  - b. Turnaround time shall be no later than two (2) weeks/ten (10) working days from the date of sampling.
  - c. Samples to be collected in the months of January, April, July, and October.
  - d. Please see Attachment 'A', for additional pollutants for sludge testing.
2. West Port WRF, Burnt Store WRF, Rotonda WRF:
  - a. Annual Analysis for Domestic Wastewater Sludge.
  - b. Turnaround time shall be no later than two (2) weeks/ten (10) working days from date of sampling.
  - c. Samples to be collected in the month of January.
  - d. Please see Attachment 'A' for additional pollutants for sludge testing.
3. West Port WRF, East Port WRF:
  - a. Monthly Analysis for Deep Injection Wells and Final Effluent:
    - 1) TOC (mg/L)
    - 2) TOX (mg/L)
  - b. Turnaround time shall be no later than two (2) weeks/ten (10) working days from date of sampling.
  - c. Samples to be collected in the first week of the month.

4. Burnt Store WRF:
  - a. Monthly Analysis for Deep Injection Wells and Final Effluent:
    - 1) TOC (mg/L)
  - b. Turnaround time shall be no later than two (2) weeks/ten (10) working days from date of sampling.
  - c. Samples to be collected in the first week of the month.
  
5. East Port WRF:
  - a. Quarterly Groundwater Analysis four (4) wells plant for: Total Recoverable Sodium (mg/L)
  - b. Turnaround time shall be no later than three (3) weeks/15 working days from date of sampling.
  - c. Samples collected in the months of January, April, July, and October.
  - d. A minimum four (4) sample points is sampled each quarter.
  
6. Burnt Store WRF:
  - a. Quarterly Groundwater Analysis for:
    - 1) Total Recoverable Arsenic (mg/L)
    - 2) Total Recoverable Cadmium (mg/L)
    - 3) Total Recoverable Chromium (mg/L)
    - 4) Total Recoverable Lead (mg/L)
  - b. Turnaround time shall be no later than three (3) weeks/15 working days from date of sampling.
  - c. Samples collected in the months of January, April, July and October.
  - d. A minimum of seven (7) sample points.
  
7. Quarterly Deep Injection Wells Monitoring Well Analysis:
  - a. East Port WRF and West Port WRF
    - 1) Sodium (mg/L)
    - 2) Calcium (mg/L)
    - 3) Magnesium (mg/L)
    - 4) Potassium (mg/L)
    - 5) Bicarbonate ion (mg/L)
    - 6) Total Iron (mg/L)
  
  - b. Burnt Store WRF and Water Treatment Facility (WTF)
    - 1) Sodium (mg/L)
    - 2) Calcium (mg/L)
    - 3) Potassium (mg/L)
    - 4) Magnesium (mg/L)
    - 5) Total Iron (mg/L)
    - 6) Bicarbonate (mg/L)
    - 7) TOX (mg/L)
  
  - c. Burnt Store WRF and WTF lower zone and Brine (High TSS)
    - 1) Gross Alpha (pCi/L)
    - 2) Uranium (ug/L)
    - 3) Radium 226 (pCi/L)
    - 4) Radium 228 (pCi/L)
      - a) Turnaround time shall be no later than three (3) weeks/fifteen (15) working days from sample date.
      - b) Samples collected in the months of January, April, July, and October.
  
8. East Port, West Port, Rotonda and Burnt Store WRF:
  - a. Analysis for nutrients on effluent for (the following tests will be performed on an as needed basis):
    - 1) Total Kjeldahl Nitrogen
    - 2) Nitrite + Nitrate
    - 3) Nitrate
    - 4) Nitrite
    - 5) Total Phosphorous
    - 6) Ammonia Nitrogen
    - 7) Chloride
    - 8) Sulfate
    - 9) Total Dissolved Solids

- 10) Total Nitrogen
  - 11) Color
  - 12) Enterococci
  - 13) E. coli
  - 14) Iron
- b. Turnaround time one (1) week/five (5) working days
  - c. Sampling may be as frequent as daily or five (5) days a week.
9. Analysis on influent and effluent (the following test will be performed on an as needed basis):
- a. Carbonaceous Biochemical Oxygen Demand Five Days (CBOD<sub>5</sub>)
  - b. Total Suspended Solids
  - c. Fecal Coliform
    - 1) Turnaround time shall be one (1) week/five (5) working days for TSS and Fecal Coliform, and two (2) weeks/ten (10) working days for CBOD<sub>5</sub>.
    - 2) Sampling may be as frequent as daily.
10. Analysis on East Port WRF, West Port WRF, Rotonda WRF and Burnt Store WRF:
- a. Primary and Secondary Drinking Water Standards
  - b. EPA Priority Pollutants on Influent and Effluent
  - c. EPA Priority Pollutants on Sludge
  - d. Turnaround time shall be no later than three (3) weeks/15 working days from date of sampling or received date by the laboratory.
11. East Port WRF, West Port WRF, Rotonda WRF, Burnt Store WRF:
- a. Sampling and Analysis of Cryptosporidium and Giardia on effluent
  - b. Sampling and Analysis of Cryptosporidium and Giardia for various liquids for CCU
  - c. Turnaround time shall be no later than three (3) weeks/15 working days from date of sampling or received date by the laboratory.
  - d. Field sampling to be provided by Contractor at all locations.
  - e. Report should include results on the latest version of FDEP Form 62-610.300(3)(a)4 (Viable and non-viable cysts)
12. CCU Service Areas: Special Analysis
- a. Analysis for Oil and Grease on various liquids for CCU
  - b. Analysis for Fecal Coliform for soils for CCU
  - c. Analysis for Fecal Coliform for various liquids for CCU
  - d. Turnaround time shall be no later than seven (7) working days from date of sampling or received date by the laboratory.
13. Burnt Store WRF:
- a. Weekly Analysis for Final Effluent:
    - 1) Total Iron (mg/L)
  - b. Turnaround time shall be no later than two (2) weeks/ten (10) working days from date of sampling.
  - c. Samples to be collected weekly.

**Leachate Treatment Facility:** The Zemel Road Leachate Treatment Facility Permit and Zemel Road MSWMD Deep Injection Well Permit require the following testing parameters to be done annually (Station LP-350, LP-1 and LP-2 in July):

- 1. Annual Treated Leachate (Station LP-350)
  - a. 62-550 Primary and Secondary Drinking Water Standards with asbestos and Dioxin Screen
  - b. EPA Priority Pollutants
  - c. Turnaround time shall be no later than four (4) weeks/20 working days from sample date or date received by the laboratory
  - d. In addition to electronic report, ADaPT report is also required for treated leachate.
- 2. Annual DIW Monitoring Wells (Station LP-1, Shallow Zone & Station LP-2, Deep Zone)
  - a. 62-550 Primary & Secondary Drinking Water Standards and Dioxin Screen
  - b. EPA Priority Pollutants
  - c. Turnaround time shall be no later than four (4) weeks/20 working days from sampled date

3. Monthly Treated Leachate (Station LP-350) and deep well (LP-1 and LP-2) to be analyzed
  - a. LP-350, LP-1, LP-2
    - 1) Chloride
    - 2) Sulfate
    - 3) Ammonia Nitrogen
    - 4) Total Kjeldahl Nitrogen
    - 5) Total Nitrogen as N
    - 6) Nitrate-Nitrite Nitrogen
    - 7) Chemical Oxygen Demand
    - 8) Total Dissolved Solids
    - 9) Total Suspended Solids
    - 10) Biochemical Oxygen Demand
    - 11) Total Alkalinity (as CaCO<sub>3</sub>)
    - 12) Fecal coliform
    - 13) TOC
  - b. Turnaround time shall be no later than two weeks (14) calendar days from sampled date.
  - c. In addition to electronic report, ADaPT report is also required for raw and treated leachate.
4. Weekly analysis (LP-210, LP-220, LP-230):
  - a. Total Suspended Solids
    - 1) In addition to electronic report, ADaPT report is also required for treated leachate.
    - 2) The following samples are weekly in-house analysis for operation purpose.

**Requirements for Drinking Water Analysis for the Public Drinking Water Systems**

Burnt Store Water Treatment Plant

1. Groundwater Monitoring Wells (seven (7) wells monthly and nine (9) wells quarterly). Turnaround time shall be no later than 14 calendar days from sampled date.

PARAMETER	UNITS	FREQUENCY
Chlorides	mg/L	Monthly
Sulfate	mg/L	Monthly
TDS	mg/L	Monthly

**Requirements for the Distribution System Testing of Potable Water Determined Annually by FDEP**

The following testing is determined each year by FDEP for the Potable Water System. This covers the tests the plant would have to complete for the distribution system in both Burnt Store and Port Charlotte.

- Asbestos (62-550.511)
  - Nitrate and Nitrite (62-550.512)
  - Inorganic Contaminants (62-550.513)
  - Total Trihalomethanes (62-550.514) Stage 1 and Stage 2 Disinfection Byproducts Rule
  - Haloacetic Acids (62-550.514) Stage 1 and Stage 2 Disinfection Byproducts Rule
  - Volatile Organic Contaminants (62-550.515)
  - Synthetic Organic Contaminants including dioxin (pest & PCBS) (62-550.516)
  - \*\*\*Microbiological (62-550.518)
  - Radio-nuclides (gross alpha, uranium, radium-226, radium-228) (62-550.519)
  - Secondary Contaminants (62-550.520)
  - Lead and Copper (40 CFR 141 subpart I)
- \*\*\* Currently, these tests are being performed in-house.

**CCU Engineering and Others Special Project**

1. Engineering Department Spring Lake Project:
  - a. Six (6) Monitoring wells and two (2) Canals to be sampled every month.
  - b. Field sampling and groundwater sampling log to be provided by Contractor for all locations.
  - c. Samples to be collected by Contractor and dropped off at East Port Laboratory for analysis.
    - 1) Fecal coliform
    - 2) Total Phosphorous

- 3) Nitrate Nitrite
  - 4) Ammonia Nitrogen
  - 5) Total Nitrogen
  - 6) Total Kjeldahl Nitrogen
2. Engineering Department as needed
- a. Analysis to be performed by the Contractor Lab.
    - 1) Enterococci
    - 2) Ammonia Nitrogen
    - 3) Total Kjeldahl Nitrogen
    - 4) Nitrate-Nitrite as N
    - 5) Ortho-phosphorous as P
    - 6) Total Phosphorous as P
    - 7) Chlorophyll A
    - 8) Ammonium as NH<sub>4</sub>
    - 9) Biochemical Oxygen Demand
    - 10) Fecal coliform
  - b. Turnaround time shall be two (2) weeks/ten (10) working days.
3. Reclaim Projects:
- a. Analysis to be performed by the Contractor Lab.
    - 1) Ammonia Nitrogen
    - 2) Total Kjeldahl Nitrogen
    - 3) Nitrate-Nitrite as N
    - 4) Ortho-phosphorous as P
    - 5) Total Phosphorous as P
    - 6) Total Nitrogen
  - b. Turnaround time shall be two (2) weeks/ten (10) working days

**TS-09 QUANTITIES:** The number of required tests is listed on Bid Form and is given for Bidder's guidance only. These quantities will be used as a tool in evaluating the bids. No minimum amount is guaranteed or implied. The bid award may result in similar quantities of tests being performed; however, this is not guaranteed. The County will not knowingly disclose an estimate disproportionate to what is anticipated or required within a 12-month period.

**TS-10 CRITERIA FOR AWARD:** The award of this bid shall be made to the lowest responsive, responsible Bidder. Award may be made by section or total and may be made in whole or in part, whichever the County determines to be in its best interest. Turn-around time and the information provided in response to all items listed in TS-07 shall be given due consideration during the review and analysis of the bid.

County reserves the right to reject the bid proposal of any Bidder who has previously failed to perform properly, or on time, contracts of similar nature; or who is not in a position to satisfactorily perform the contract. If, after bid opening, the lowest Bidder is deemed non-responsible by the County, such Bidder shall receive written notice from the County of this determination. The bidder shall have five (5) business days from the date of this notice to dispute the determination and to provide to the County any additional information it deems relevant regarding the bidder's responsibility. The County shall make a final determination regarding the bidder's responsibility at the time of award of the contract.

<b>INSURANCE REQUIREMENTS</b> <b>WATER QUALITY ANALYSIS – UTILITIES - ANNUAL CONTRACT</b> <b>BID NO. 2024000113</b>
---

Contractor and subcontractors shall procure and maintain until all of their obligations have been discharged, including any warranty periods under this Contract are satisfied, insurance against claims for injury to persons or damage to property which may arise from or in connection with the performance of the work hereunder by the Contractor, his agents, representatives, employees or subcontractors.

The insurance requirements herein are minimum requirements for this Contract and in no way limit the indemnity covenants contained in this Contract. The County in no way warrants that the minimum limits contained herein are sufficient to protect the Contractor from liabilities that might arise out of the performance of the work under this Contract by the Contractor, his agents, representatives, employees, or subcontractors. Contractor is free to purchase such additional insurance as may be determined necessary.

**A. MINIMUM SCOPE AND LIMITS OF INSURANCE** - Contractor shall provide coverage with limits of liability not less than those stated below. An excess liability policy or umbrella liability policy may be used to meet the minimum liability requirements provided that the coverage is written on a "following form" basis.

**1. Commercial General Liability – Occurrence Form (CG 00 01)**

Policy shall include bodily injury, personal injury, property damage and broad form contractual liability.

**Minimum Requirements:**

- General Aggregate \$2,000,000
- Each Occurrence \$1,000,000

- a. The policy shall be endorsed to include the following additional insured language: "Charlotte County a political subdivision of the state of Florida and its officers, employees, agents and volunteers" shall be named as an additional insured with respect to liability arising out of the activities performed by, or on behalf of the Contractor.
- b. Contractor's subcontractors shall be subject to the same minimum requirements identified above.
- c. Policy shall be endorsed for a waiver of subrogation against the Charlotte County.

**2. Automobile Liability**

Bodily injury and property damage for any owned, hired, and non-owned vehicles used in the performance of this Contract. Automobile liability must be written on a standard ISO form (CA 00 01) covering any auto (Code 1), or if Contractor has no owned autos, hired (Code 8) and non-owned (Code 9) autos.

Combined Single Limit (CSL) \$1,000,000

- a. The policy shall be endorsed to include the following additional insured language: "Charlotte County a political subdivision of the state of Florida and its officers, employees, agents and volunteers" shall be named as an additional insured with respect to liability arising out of the activities performed by, or on behalf of the Contractor, including automobiles owned, leased, hired or borrowed by the Contractor".
- b. Contractor's sub-contractors shall be subject to the same minimum requirements identified in this section.
- c. Policy shall contain a waiver of subrogation against the Charlotte County.

**3. Worker's Compensation and Employers' Liability**

Workers' Compensation  
Employers' Liability

Each Accident, bodily injury or disease \$1,000,000

- a. Policy shall contain a waiver of subrogation against the Charlotte County.
- b. Projects on or along navigable waters an endorsement for US Longshoremen and Harbor Workers and Jones Act is required.
- c. Contractor's sub-contractors shall be subject to the same minimum requirements identified in this section.
- d. If the contractor has no employees the contractor must submit to the County the Workers Compensation Exemption from the State of Florida.



**Additional Insured** – All policies, **except** for the Workers Compensation shall contain endorsements naming the County its officers, employees, agents and volunteers as additional insured with respect to liabilities arising out of the performance of services contained herein. The additional insured endorsements' shall not limit the scope of coverage for the County to vicarious liability but shall allow coverage for the County to full extent provided by the policy, even if those limits exceed those required by this contract. Such additional insured coverage shall be at least as broad as Additional Insured(Form B) endorsement form ISO, CG 20 10 11 85 or both CG 20 10 and CG 20 37 if later revisions used.

**Waiver of Subrogation Rights** – The Contractor shall require the carriers of required coverage's to waive all rights of subrogation against the County, its officers, employees, agents and volunteers. Contractor agrees to obtain any endorsement that may be necessary to affect this waiver of subrogation. All general or auto liability insurance coverage provided shall not prohibit the Contractor and Contractor's employees or agents from waiving the right of subrogation prior to a loss or claim. The Contractor hereby waives all rights of subrogation against the County.

**Policies Primary and Non-Contributory** – For any claims related to this contract, the Contractor's insurance coverage shall be primary insurance as respects the County, its officers, employees, agents and volunteers. Any insurance or self-insurance maintained by the County, its officers, employees, agents or volunteers shall be excess of the Contractor's insurance and shall not contribute with it.

**Severability of Interests** – The Contractor agrees to ensure that coverage provided to meet these requirements is applicable separately to each insured and there will be no cross liability exclusions that preclude coverage for suits between the Contractor and the County or between the County and any other insured or additional insured under the policy.

**Proof of Coverage** - Prior to the commencement of performance of services the Contractor shall furnish to the County Purchasing Division Certificates of Insurance and amendatory endorsements or copies of the applicable policies. These certificates shall provide that such insurance shall not be terminated or expire without notice thereof in accordance with the policy provisions and Contractor shall maintain such insurance from the time the Contractor commences performance of services until completion of such services.

**Acceptability of insurance carrier** – Unless otherwise approved by Risk Management, Insurance shall be written by insurers authorized to do business in the State of Florida and with a minimum Best Insurance Guide rating of "A:VII".

**Deductibles and Self-Insured Retention** – Any and all deductibles or self-insured retentions in excess of \$10,000 shall be declared to and approved by Risk Management. The County may require the Contractor to purchase coverage with a lower deductible or retention or provide proof of ability to pay losses and related investigations, claim administration and defense expenses within the deductible or retention.

**Failure to Procure Coverage** – In the event that any policy of insurance required under this contract does not comply with the requirements, is not procured or is cancelled and not replaced, the County has the right but not the obligation or duty to terminate the contract or obtain insurance if it deems necessary and any premiums paid by the County will be promptly reimbursed by the Contractor or County payments to the Contractor will be reduced to pay for County purchased insurance.

**Insurance Review** – Insurance requirements are subject to periodic review by the County. The Risk Manager or designee is authorized, but not required, to reduce, waive, or suspend any insurance requirements whenever Risk Management determines that any of the required insurance is not available, is unreasonably priced or is not needed to protect the interests of the County. In addition, if Risk Management determines that heretofore, unreasonably or unavailable types of insurance coverage or coverage limits become reasonably priced or available, the Risk Manager or designee is authorized, but not required, to change the above insurance requirements to require additional types of insurance coverage or higher coverage limits, provided that any such change is reasonable in light of past claims against the County, inflation, or any other item reasonably related to the County's risk. Any change requiring additional types of insurance coverage or higher coverage limits must be made by amendment to this contract. Contractor agrees to execute any such amendment within thirty (30) days of receipt.

Any failure, actual, or alleged, on part of the County to monitor or enforce compliance with any of the insurance and indemnification requirements will not be deemed as a waiver of any rights on the par to the County.

**SAFETY AND HEALTH REQUIREMENTS**  
**WATER QUALITY ANALYSIS – UTILITIES - ANNUAL CONTRACT**  
**BID NO. 2024000113**

**SH-01 HEALTH AND SAFETY PLAN:** It shall be the responsibility of the Contractor to comply with OSHA, EPA, DOT and other applicable Federal and State of Florida laws, rules, regulations or other requirements. This includes, but is not limited to, 29 CFR 1926 (Safety and Health Regulations for Construction) and 1910 (Safety and Health Regulations for General Industry). Contractors are required to have a written Health and Safety Program that is jobsite specific. The elements of this written program shall be in accordance with OSHA 1926 and 1910. A list of program elements can be obtained from Charlotte County Risk Management.

The Contractor will designate a responsible member of his organization whose duty shall be the prevention of accidents at the site. This person shall be the Contractor's superintendent unless otherwise designated in writing by the Contractor to the Project Manager.

A copy of the Contractor's Health and Safety Plan will be submitted to Charlotte County at least 10 days prior to commencement of work. Contractor shall provide documentation that his employees and subcontractors received training (been informed of) on the Contractor's Health and Safety Plan. The Contractor will be responsible for conducting a site safety briefing for all visitors to the site. Documentation of these site safety briefings are to be maintained by the Contractor and made available to Charlotte County upon request.

Contractor will post, where appropriate, all necessary job-site Health and Safety notices. The Environmental Health and Safety Manager will conduct unannounced job-site inspections during the course of the project. Minor safety violations may be addressed immediately with the onsite supervisor and Project Manager. Major safety violations will result in written notification to the Contractor and Charlotte County Department Director under which the project is being performed. Hazardous conditions that are considered by the Environmental Health and Safety Manager to be immediately dangerous to life or limb will result in immediate stoppage of work until the hazardous conditions are corrected.

**SH-02 ACCIDENTAL SPILLS:** In the event of an accidental release or spill of chemicals or other hazardous materials the Contractor shall:

- Immediately take action as appropriate to contain the spill if this action can be taken without jeopardizing the health or safety of employees,
- Notify the Fire/EMS, or other entities as needed or required,
- Contact the Project Manager/Coordinator, and
- Contact Charlotte County Risk Management and Environmental Health and Safety Manager.

The following phone numbers may be used in the event of an emergency:

Risk Management	941.764.4191
Environmental Health and Safety Manager	941.743.1381 (or Cell 941.223.5535)

**SH-03 CONTROL OF FUGITIVE EMISSIONS:** The Contractor shall take all reasonable precautions necessary to control fugitive emissions from the job site. Fugitive emissions include, but are not limited to: nuisance dust, chemical odors/vapors/gases, hazardous materials such as lead or asbestos, and noise. Where the product(s) or material(s) to be used by the Contractor has a permissible exposure limit (PEL) established by OSHA the Contractor shall take all reasonable steps to maintain emissions of the product(s) or materials below the OSHA PEL. To verify that emissions are maintained below the OSHA PEL, the Contractor shall monitor, or shall contract to have monitored, work area exposure conditions. Monitoring shall occur, at a minimum, during the start of work and whenever there is a change in procedure, process, or chemical or material used. If it is deemed not practical to maintain exposures below the PEL, the Contractor shall restrict access to all areas where exposures exceed the PEL to authorized personnel only.

**A. ASBESTOS AND SUSPECT ASBESTOS CONTAINING BUILDING MATERIALS:** Contractors shall, under no circumstances, damage or disturb suspect or known asbestos containing material (ACM) unless they are a licensed Florida Asbestos Abatement Contractor and have been specifically employed to perform asbestos repair or removal. It is the responsibility of the Contractor to provide his or her own asbestos awareness program in accordance with 29 CFR 1926.1101. Where required by Federal and State regulations, the Contractor is required to have asbestos surveys performed prior to any work that includes, but is not limited to, renovation, and demolition. The asbestos survey must be performed by a firm that is licensed in the State of Florida to perform such surveys. A copy of the asbestos survey shall be submitted to the County's project manager. Asbestos materials may not be used or installed in any Charlotte County facilities.

**B. LEAD-CONTAINING BUILDING MATERIALS:** Contractors that will disturb lead-containing building materials during the course of work shall take all necessary precautions to protect Charlotte County employees and the public from exposure to lead dust or contamination. These measures shall conform, at a minimum, to the OSHA requirements detailed in 29 CFR 1926.62 and applicable local, state and federal regulations. Where the Contractor is engaged in work in child-occupied facilities, such work shall be performed in accordance with 40 CFR 745, and clearance testing shall be performed by the Environmental Health and Safety Manager or a licensed consultant at the conclusion of the project in accordance with the requirements of this regulation.

**C. SAMPLING AND MONITORING RESULTS:** The results of all personal and area monitoring and or other samples collected for health and safety compliance required by OSHA or any other state or federal regulatory agency shall be provided to Charlotte County.

**BID FORM  
WATER QUALITY ANALYSIS – UTILITIES – ANNUAL CONTRACT  
BID NO. 2024000113**

TO: Senior Division Manager - Purchasing  
Board of County Commissioners  
Charlotte County Administration Center  
18500 Murdock Circle  
Port Charlotte, Florida 33948-1094

The undersigned, as bidder, does hereby declare that he has read the Request for Bids, Instructions to Bidders, Technical Specifications & Conditions, Insurance, Safety & Health Requirements, Bid Form, and any other documentation for

**WATER QUALITY ANALYSIS – UTILITIES – ANNUAL CONTRACT**

and further agrees to furnish all items listed on the attached Bid Form in accordance with the unit price(s) submitted. The above specified documents are herein incorporated into the Bid Form and shall be defined as the contract documents.

**CHARLOTTE COUNTY UTILITIES** \$ \_\_\_\_\_

**Percentage discount on tests not listed** \_\_\_\_\_ percent.

**Length of time to respond to directive to perform.** \_\_\_\_\_ hours (not to exceed 24 hours).

**Please mark the following spaces with a checkmark (✓) indicating the following are made a part of your Bid Form:**

- Proof of certification of subcontractors as required on (TS-02, B)**
- Proof of certification of staff & classification of employee identified in accordance with Section TS-03**
- Prices bid include test bottles, shipping containers, mailers, and courier**
- All submittals required by Item TS-07 are enclosed**
- Current Quality Manual**

**NOTE:** In accordance with Florida Statutes, Section 119.071(1)(b)2: Sealed bids, proposals, or replies received by an agency pursuant to a competitive solicitation are exempt from s. 119.071(1)(b)2 and s. 24(a), Art. I of the State Constitution, except as provided by Florida Statutes 255.0518, until such time as the agency provides notice of an intended decision or until 30 days after opening the bids, proposals, or final replies, whichever is earlier. Upon release of the intended decision, if you wish to obtain the quote results, you may do so by visiting our Website at <http://purchasingbids.charlottecountyfl.gov/> under "Purchasing Bids Online", document number 241134. No information regarding the submittal will be divulged over the telephone.

**OPTIONAL ELECTRONIC BID SUBMISSIONS:** If your firm would like to submit your bid electronically, please visit <http://bit.ly/3TYAyKa> and follow given instructions.

**Name of Bidder:** \_\_\_\_\_

(This form to be returned)

**SUMMARY OF PAY ITEMS FOR WATER QUALITY ANALYSIS – UTILITIES – ANNUAL CONTRACT**

**PLEASE NOTE:** The entirety of each item will not always be accomplished; therefore, in such cases where it may, it is requested a cost be indicated for "Total Sample".

	<b>QTY.</b>	<b>UNIT PRICE</b>	<b>EXTENDED</b>
<b><u>TREATMENT FACILITIES</u></b>			
<b>East Port Laboratory</b>			
1. East Port Lab Reagent Water TOC Analysis	12	\$ _____	\$ _____
2. East Port Lab Reagent Water Annual Analysis	1	\$ _____	\$ _____
<b>Wastewater Treatment Plants</b>			
1. East Port Domestic Wastewater Sludge Analysis	4	\$ _____	\$ _____
2. West Port, Rotonda and Burnt Store Domestic Sludge Analysis	3	\$ _____	\$ _____
3. West Port, East Port WRF Monthly TOC and TOX	72	\$ _____	\$ _____
4. Burnt Store WRF Monthly TOC	36	\$ _____	\$ _____
5. East Port WRF Analysis for Sodium	16	\$ _____	\$ _____
6. Burnt Store WRF Analysis for groundwater			
a. Total recoverable Arsenic		\$ _____	
b. Total recoverable Cadmium		\$ _____	
c. Total recoverable Chromium		\$ _____	
d. Total recoverable Lead		\$ _____	
e. Discounted total for entire sample	28	\$ _____	\$ _____
7. Deep Well Injection Monitoring wells			
a. East Port WRF and West Port WRF Analysis priced per well			
1) Sodium		\$ _____	
2) Calcium		\$ _____	
3) Magnesium		\$ _____	
4) Potassium		\$ _____	
5) Bicarbonate ion		\$ _____	
6) Total Iron		\$ _____	
7) Discounted total for entire sample	24	\$ _____	\$ _____
b. Burnt Store WRF and WTF Deep Injection Wells			
1) TOX		\$ _____	
2) Sodium		\$ _____	
3) Calcium		\$ _____	
4) Potassium		\$ _____	
5) Magnesium		\$ _____	
6) Total Iron		\$ _____	
7) Bicarbonate		\$ _____	
8) Discounted total for entire sample	16	\$ _____	\$ _____
c. Burnt Store WRF and WTF lower zone and Brine (High TSS)			
1) Gross Alpha		\$ _____	
2) Uranium		\$ _____	
3) Radium 226		\$ _____	
4) Radium 228		\$ _____	
5) Discounted total for entire sample	12	\$ _____	\$ _____

**NAME OF BIDDER** \_\_\_\_\_

**(This form to be returned)**

	QTY.	UNIT PRICE	EXTENDED
8. East Port, West Port, Rotonda, and Burnt Store			
a. TKN		\$ _____	
b. NO <sub>2</sub> + NO <sub>3</sub>		\$ _____	
c. NO <sub>3</sub>		\$ _____	
d. NO <sub>2</sub>		\$ _____	
e. TP		\$ _____	
f. NH <sub>3</sub> -N		\$ _____	
g. Cl		\$ _____	
h. TDS		\$ _____	
i. SO <sub>4</sub>		\$ _____	
j. TN		\$ _____	
k. Color		\$ _____	
l. Enterococci		\$ _____	
m. E. coli		\$ _____	
n. Iron		\$ _____	
o. Discounted total for entire sample	5	\$ _____	\$ _____
9. Analysis on influent and effluent			
a. CBOD <sub>5</sub>		\$ _____	
b. TSS		\$ _____	
c. Fecal Coliform		\$ _____	
d. Discounted total for entire sample	5	\$ _____	\$ _____
10. Analysis on East Port WRF, West Port WRF, Rotonda WRF or Burnt Store WRF:			
a. Primary Drinking Water Standards on effluent	1	\$ _____	
b. Secondary Drinking Water Standards on effluent	1	\$ _____	
c. Discounted total for entire sample above	4	\$ _____	\$ _____
d. Priority Pollutants on influent and effluent	1	\$ _____	\$ _____
e. Priority Pollutants on Sludge	1	\$ _____	\$ _____
11. Sampling and Analysis of Cryptosporidium and Giardia on East Port WRF, West Port WRF, Rotonda WRF or Burnt Store WRF effluent.			
a. Cryptosporidium and Giardia on effluent		\$ _____	
b. Discounted total for entire sample	4	\$ _____	
c. Cryptosporidium and Giardia, various liquids (CCUD)	1	\$ _____	\$ _____
12. CCUD Service Areas: Special Analysis			
a. Oil & Grease on various liquids for CCUD		\$ _____	
b. Fecal Coliform, soils for CCUD		\$ _____	
c. Fecal Coliform on various liquids for CCUD		\$ _____	
d. Discounted total for entire sample	1	\$ _____	\$ _____
13. Burnt Store WRF:			
a. Total Iron on Final Effluent		\$ _____	
b. Discounted total for entire sample	52	\$ _____	\$ _____

**LEACHATE FACILITIES**

1. Treated Leachate			
a. Primary & Secondary Drinking Water Standards		\$ _____	
b. EPA Priority Pollutants		\$ _____	
c. Dioxin Screen		\$ _____	
d. Discounted total for entire sample	1	\$ _____	\$ _____

**NAME OF BIDDER** \_\_\_\_\_

(This form to be returned)

	QTY.	UNIT PRICE	EXTENDED
2. Leachate Deep Well Injection Monitoring Wells			
a. Primary & Secondary Drinking Water Standards		\$ _____	
b. EPA Priority Pollutants		\$ _____	
c. Dioxin Screen		\$ _____	
d. Discounted total for entire sample	2	\$ _____	\$ _____
3. Monthly treated Leachate and deep well:			
a. LP-350, LP-1, and LP-2			
1. Chloride		\$ _____	
2. Sulfate		\$ _____	
3. Ammonia Nitrogen		\$ _____	
4. Total Kjeldahl Nitrogen		\$ _____	
5. Total Nitrogen as N		\$ _____	
6. Nitrate-Nitrite Nitrogen		\$ _____	
7. Chemical Oxygen Demand		\$ _____	
8. Total Dissolved Solids		\$ _____	
9. Total Suspended Solids		\$ _____	
10. Biochemical Oxygen Demand		\$ _____	
11. Total Alkalinity (as CaCO3)		\$ _____	
12. Fecal Coliform		\$ _____	
13. TOC		\$ _____	
14. Discounted total for entire sample	36	\$ _____	\$ _____
4. Weekly In-House:			
a. LP-210, LP-220, LP-230			
1) Total Suspended Solids		\$ _____	
2) Discounted total for entire sample	156	\$ _____	\$ _____

**DRINKING WATER ANALYSIS ON PUBLIC DRINKING WATER SYSTEMS**

**Burnt Store Water Treatment Plant**

1. Groundwater Monitoring Production Wells			
a. Chlorides		\$ _____	
b. Sulfate		\$ _____	
c. TDS		\$ _____	
d. Discounted total for entire sample	120	\$ _____	\$ _____

**DISTRIBUTION SYSTEM – POTABLE WATER – BURNT STORE AND PORT CHARLOTTE**

1. Asbestos (62-550.511)	1	\$ _____	\$ _____
2. Nitrate and Nitrite (62-550.512)	1	\$ _____	\$ _____
3. Inorganic Contaminants (62-550.513)	1	\$ _____	\$ _____
4. Total Trihalomethanes (62-550.514), Stage 1 & Stage 2 Disinfection			
5. Byproducts Rule (10 samples quarterly)	40	\$ _____	\$ _____
6. Haloacetic Acids (62-550.514) Stage 1 & Stage 2 Disinfection			
7. Byproducts Rule (10 samples quarterly)	40	\$ _____	\$ _____
8. Volatile Organic Contaminants (62-550.515)	1	\$ _____	\$ _____
9. Synthetic Organic Contaminants including dioxin (past & pcbs) (62-550.516)	1	\$ _____	\$ _____
10. Microbiological (62-550.518)	125	\$ _____	\$ _____
11. Radionuclides (gross alpha, uranium, radium-226, radium-228) (62-550.519)	1	\$ _____	\$ _____
12. Secondary Contaminants (62-550.520)	1	\$ _____	\$ _____
13. Lead and Copper (40 CFR 141 subpart I)	80	\$ _____	\$ _____
14. Water Quality Parameters (40 CRF 141 subpart 1)	5	\$ _____	\$ _____

**NAME OF BIDDER \_\_\_\_\_**

**(This form to be returned)**

**QTY.    UNIT PRICE    EXTENDED**

**CCU ENGINEERING SPECIAL PROJECT**

1. Engineering Department Spring Lake Project:			
a. Sampling of monitoring wells.	8	\$ _____	
b. Discounted total for entire sample	96	\$ _____	\$ _____
2. Engineering Department Miscellaneous (as needed)			
a. Enterococci		\$ _____	
b. Ammonia Nitrogen		\$ _____	
c. Total Kjeldahl Nitrogen		\$ _____	
d. Nitrate-Nitrite as N		\$ _____	
e. Ortho-phosphorous as P		\$ _____	
f. Total Phosphorous as P		\$ _____	
g. Chlorophyll A		\$ _____	
h. Ammonium as NH4		\$ _____	
i. Biochemical Oxygen Demand		\$ _____	
j. Fecal coliform		\$ _____	
k. Discounted total for entire sample	1	\$ _____	\$ _____
3. Reclaim Project (monthly)			
a. Ammonia Nitrogen		\$ _____	
b. Total Kjeldahl Nitrogen		\$ _____	
c. Nitrate-Nitrite as N		\$ _____	
d. Ortho-phosphorous as P		\$ _____	
e. Total Phosphorous as P		\$ _____	
f. Total Nitrogen		\$ _____	
g. Discounted total for entire sample	120	\$ _____	\$ _____

**TOTAL AMOUNT    \$ \_\_\_\_\_**  
**(Total only the amounts listed in the extended column)**

**NAME OF BIDDER \_\_\_\_\_**

**(This form to be returned)**



If notified of the acceptance of this bid form, the undersigned agrees to execute a Contract for the stated compensation in the form as prescribed by the County, within the time constraints outlined in Instructions to Bidders.

The signature below is a guarantee that the Bidder will not withdraw his/her bid for a period of sixty (60) days after the scheduled time for opening the bids.

In accordance with section 287.135, Florida Statutes, the undersigned certifies that the company is not on the Scrutinized Companies with Activities in Sudan List, the Scrutinized Companies with Activities in the Iran Petroleum Energy Sector List and does not have business operations in Cuba or Syria (if applicable) or the Scrutinized Companies that Boycott Israel List or is not participating in a boycott of Israel.

The undersigned acknowledges receipt of the following addenda, and the cost, if any, of such revisions has been included in the price bid.

Addendum No. \_\_\_\_\_, Dated \_\_\_\_\_; Addendum No. \_\_\_\_\_, Dated \_\_\_\_\_; Addendum No. \_\_\_\_\_, Dated \_\_\_\_\_

Addendum No. \_\_\_\_\_, Dated \_\_\_\_\_; Addendum No. \_\_\_\_\_, Dated \_\_\_\_\_; Addendum No. \_\_\_\_\_, Dated \_\_\_\_\_

**HOLD HARMLESS AGREEMENT:** The bidding firm as indicated below, through the signing of this document by any authorized party or agent, indemnify, hold harmless and defend Charlotte County, a political subdivision of the State of Florida, its officers, agents, employees, and volunteers from all suits and actions, including attorney's fees and all costs of litigation and judgment of every name and description brought against the County as a result of loss, damage or injury to person or property by reason of any act or failure to act by the bidding firm, its agents, servants or employees.

**Type of Organization (Please Check One):** Individual Ownership \_\_\_\_\_ Joint Venture \_\_\_\_\_  
Partnership \_\_\_\_\_ Corporation \_\_\_\_\_

**Name of Bidding Firm** \_\_\_\_\_

**Mailing Address** \_\_\_\_\_

**Location Address** \_\_\_\_\_

**City & State** \_\_\_\_\_ **ZIP** \_\_\_\_\_

**Telephone:** \_\_\_\_\_ **E-mail:** \_\_\_\_\_

**Signature of person authorized to bind the Company:** \_\_\_\_\_

**Print Name/Title of person authorized to bind the Company:** \_\_\_\_\_

**Date:** \_\_\_\_\_

(This form to be returned)

**SOURCE OF SUPPLY AND SUBCONTRACTORS**

The following sources of supply and subcontractors shall be used for **WATER QUALITY ANALYSIS – UTILITIES – ANNUAL CONTRACT**. (If quoter does not have a source of supply or subcontractor, insert "to be determined". When source or subcontractor is determined, selection will be subject to County approval. If not applicable, please state N/A).

<u>Source of Supply</u>	<u>Subcontractor(s)</u>
1. _____	1. _____
2. _____	2. _____
3. _____	3. _____
4. _____	4. _____
5. _____	5. _____
6. _____	6. _____

**DRUG FREE WORKPLACE FORM**

The undersigned vendor in accordance with Florida Statute 287.087 hereby certifies that \_\_\_\_\_  
(name of business) does:

1. Publish a statement notifying employees that the unlawful manufacture, distribution, dispensing, possession, or use of a controlled substance is prohibited in the workplace and specifying the actions that will be taken against employees for violations of such prohibition.
2. Inform employees about the dangers of drug abuse in the workplace, the business's policy of maintaining a drug-free workplace, any available drug counseling, rehabilitation, and employee assistance programs, and the penalties that may be imposed upon employees for drug abuse violations.
3. Give each employee engaged in providing the commodities or contractual services that are under bid a copy of the statement specified in subsection (1).
4. In the statement specified in subsection (1), notify the employees that, as a condition of working on the commodities or contractual services that are under bid, the employee will abide by the terms of the statement and will notify the employer of any conviction of, or plea of guilty or nolo contendere to, any violation of Chapter 893 or of any controlled substance law of the United States or any state, for a violation occurring in the workplace no later than five (5) days after such conviction.
5. Impose a sanction on, or require the satisfactory participation in a drug abuse assistance or rehabilitation program if such is available in the employee's community, by any employee who is so convicted.
6. Make a good faith effort to continue to maintain a drug-free workplace through implementation of this section.

As the person authorized to sign the statement, I certify that this firm complies fully with the above requirements.

Signature \_\_\_\_\_

Dated \_\_\_\_\_

**ATTACHMENT "A"**

**POLLUTANTS FOR TESTING**

Arsenic, mg/kg ~(dry weight)

Cadmium, mg/kg ~(dry weight)

Copper, mg/kg ~(dry weight)

Lead, mg/kg ~(dry weight)

Mercury, mg/kg ~(dry weight)

Molybdenum, mg/kg ~(dry weight)

Nickel, mg/kg ~(dry weight)

Selenium, mg/kg ~(dry weight)

Zinc, mg/kg ~(dry weight)

Total Nitrogen, percent ~(dry weight)

Total Phosphorous, percent ~(dry weight)

Water Extractable Phosphorus, percent ~(dry weight)

Total Potassium, percent ~(dry weight)

pH, Standard Units

Total solids, percent

Calcium Carbonate Equivalent, percent ~(dry weight)



**CHARLOTTE COUNTY BOARD OF COMMISSIONERS  
OFFICIAL BID TABULATION  
WATER QUALITY ANALYSIS - UTILITIES - ANNUAL CONTRACT  
BID NO. 2024000113**

**BID OPENING DATE: NOVEMBER 8, 2023**

**DEPT: UTILITIES**

Company Name →		SANDERS LABORATORIES, INC.	
Location →		Nokomis, FL	
Description ↓	Qty.	Unit Price	Extended Price
<b>TREATMENT FACILITIES</b>			
<b>East Port Laboratory</b>			
1. East Port Lab Reagent Water TOC Analysis	12	\$ 16.00	\$ 192.00
2. East Port Lab Reagent Water Annual Analysis	1	\$ 80.00	\$ 80.00
<b>Wastewater Treatment Plants</b>			
1. East Port Domestic Wastewater Sludge Analysis	4	\$ 140.00	\$ 560.00
2. West Port, Rotonda, and Burnt Store Domestic Sludge Analysis	3	\$ 140.00	\$ 420.00
3. West Port, East Port WRF Monthly TOC and TOX	72	\$ 160.00	\$ 11,520.00
4. Burnt Store WRF Monthly TOC	36	\$ 16.00	\$ 576.00
5. East Port WRF Analysis for Sodium	16	\$ 10.00	\$ 160.00
6. Burnt Store WRF Analysis For Groundwater			
a. Total Recoverable Arsenic		\$ 12.00	
b. Total Recoverable Cadmium		\$ 12.00	
c. Total Recoverable Chromium		\$ 12.00	
d. Total Recoverable Lead		\$ 12.00	
e. Discounted total for entire sample	28	\$ 40.00	\$ 1,120.00
7. Deep Well Injection Monitoring wells			
a. East Port WRF and West Port WRF Analysis Priced Per Well			
1) Sodium		\$ 12.00	
2) Calcium		\$ 12.00	
3) Magnesium		\$ 12.00	

Witnesses: Kathleen Lindback, CPPB, Senior Contract Specialist

and

Kimberly Chamberlain, Contract Specialist

4) Potassium		\$	12.00	
5) Bicarbonate ion		\$	12.00	
6) Total Iron		\$	12.00	
7) Discounted total for entire sample	24	\$	60.00	\$ 1,440.00
b. Burnt Store WRF and WTF Deep Injection Wells				
1) TOX		\$	160.00	
2) Sodium		\$	12.00	
3) Calcium		\$	12.00	
4) Potassium		\$	12.00	
5) Magnesium		\$	12.00	
6) Total Iron		\$	12.00	
7) Bicarbonate		\$	12.00	
8) Discounted total for entire sample	16	\$	210.00	\$ 3,360.00
c. Burnt Store WRF And WTF Lower Zone And Brine (High TSS)				
1) Gross Alpha		\$	60.00	
2) Uranium		\$	75.00	
3) Radium 226		\$	150.00	
4) Radium 228		\$	150.00	
5) Discounted total for entire sample	12	\$	295.00	\$ 3,540.00
8. East Port, West Port, Rotonda, and Burnt Store				
a. TKN		\$	40.00	
b. NO2 & NO3		\$	40.00	
c. NO3		\$	40.00	
d. NO2		\$	40.00	
e. TP		\$	40.00	
f. NH3-N		\$	20.00	

g. Cl		\$	20.00	
h. TDS		\$	20.00	
i. SO4		\$	20.00	
j. TN		\$	45.00	
k. Color		\$	20.00	
l. Enterococci		\$	29.00	
m. E. coli		\$	29.00	
n. Iron		\$	12.00	
o. Discounted total for entire sample	5	\$	130.00	\$ 650.00
9. Analysis On Influent & Effluent:				
a. CBOD5		\$	30.00	
b. TSS		\$	20.00	
c. Fecal Coliform		\$	20.00	
d. Discounted total for entire sample	5	\$	40.00	\$ 200.00
10. Analysis On East Port WRF, West Port WRF, Rotonda WRF, Or Burnt Store WRF				
a. Primary Drinking Water standards on effluent	1	\$	850.00	
b. Secondary Drinking Water standards on effluent	1	\$	200.00	
c. Discounted total for entire sample	4	\$	900.00	\$ 3,600.00
d. Priority Pollutants on influent and effluent	1	\$	500.00	\$ 500.00
e. Priority Pollutants on sludge	1	\$	500.00	\$ 500.00
11. Sampling And Analysis Of Cryptosporidium And Giardia On East Port WRF, West Port WRF, Rotonda WRF Or Burnt Store WRF Effluent				
a. Cryptosporidium and Giardia on effluent		\$	950.00	
b. Discounted total for entire sample	4	\$	950.00	
c. Cryptosporidium and Giardia on various liquids	1	\$	950.00	\$ 950.00
12. CCUD Service Areas: Special Analysis				
a. Oil and grease on various liquids for CCUD		\$	64.00	

Witnesses: Kathleen Lindback, CPPB, Senior Contract Specialist

and

Kimberly Chamberlain, Contract Specialist

b. Fecal Coliform, soils for CCUD		\$	45.00	
c. Fecal Coliform on various liquids for CCUD		\$	45.00	
d. Discounted total for entire sample	1	\$	150.00	\$ 150.00
<b>13. Burnt Store WRF</b>				
a. Total Iron on Final Effluent		\$	25.00	
b. Discounted total for entire sample	52	\$	12.00	\$ 624.00
<b>LEACHATE FACILITIES</b>				
<b>1. Treated Leachate:</b>				
a. Primary and Secondary Drinking Water Standards		\$	1,600.00	
b. EPA Priority Pollutants		\$	750.00	
c. Dioxin Screen		\$	400.00	
d. Discounted total for entire sample	1	\$	1,900.00	\$ 1,900.00
<b>2. Leachate Deep Well Injection Monitoring Wells</b>				
a. Primary and Secondary Drinking Water Standards		\$	1,600.00	
b. EPA Priority Pollutants		\$	600.00	
c. Dioxin Screen		\$	400.00	
d. Discounted total for entire sample	2	\$	1,900.00	\$ 3,800.00
<b>3. Monthly treated Leachate and deep well</b>				
a. LP350, LP-1, and LP-2				
1) Chloride		\$	35.00	
2) Sulfate		\$	35.00	
3) Ammonia Nitrogen		\$	35.00	
4) Total Kjeldahl Nitrogen		\$	35.00	
5) Total Nitrogen as N		\$	35.00	
6) Nitrate-Nitrite Nitrogen		\$	35.00	
7) Chemical Oxygen Demand		\$	35.00	

8) Total Dissolved Solids		\$	35.00	
9) Total Suspended Solids		\$	35.00	
10) Biochemical Oxygen Demand		\$	35.00	
11) Total Alkalinity (as CaCO3)		\$	35.00	
12) Fecal Colliform		\$	35.00	
13) TOC		\$	35.00	
14) Discounted total for entire sample	36	\$	185.00	\$ 6,660.00
4. Weekly In-House				
a. LP-210, LP-220, LP-230				
1) Total Suspended Solids		\$	35.00	
2) Discounted total for entire sample	156	\$	12.00	\$ 1,872.00
<b>DRINKING WATER ANALYSIS ON PUBLIC DRINKING WATER SYSTEMS</b>				
Burnt Store Water Treatment Plant				
1. Groundwater Monitoring Production Wells				
a. Chlorides		\$	20.00	
b. Sulfate		\$	20.00	
c. TDS		\$	20.00	
d. Discounted total for entire sample	120	\$	30.00	\$ 3,600.00
<b>DISTRIBUTION SYSTEM - POTABLE WATER - BURNT STORE AND PORT CHARLOTTE</b>				
1. Asbestos (62-550.511)	1	\$	150.00	\$ 150.00
2. Nitrate and Nitrite (62-550.512)	1	\$	20.00	\$ 20.00
3. Inorganic Contaminants (62-550.513)	1	\$	130.00	\$ 130.00
4. Total Trihalomethanes (62-550.514), Stage 1 & Stage 2 Disinfection				
5. Byproducts Rule (8 samples quarterly)	40	\$	40.00	\$ 1,600.00
6. Haloacetic Acids (62-550.514) Stage 1 & Stage 2 Disinfection				
7. Byproducts Rule (10 samples quarterly)	40	\$	60.00	\$ 2,400.00

Witnesses: Kathleen Lindback, CPPB, Senior Contract Specialist

and

Kimberly Chamberlain, Contract Specialist



8. Volatile Organic Contaminants (62-550.515)	1	\$	70.00	\$	70.00
9. Synthetic Organic Contaminants including dioxin (past & pcbs) (62-550.516)	1	\$	950.00	\$	950.00
10. Microbiological (62-550.518)	125	\$	10.00	\$	1,250.00
11. Radionuclides (gross alpha, uranium, radium-226, radium-228) (62-550.519)	1	\$	295.00	\$	295.00
12. Secondary Contaminants (62-550.520)	1	\$	150.00	\$	150.00
13. Lead and Copper (40 CFR 141 subpart I)	80	\$	22.00	\$	1,760.00
14. Water Quality Parameters (40 CFR 141 subpart 1)	5	\$	50.00	\$	250.00
<b>CCU ENGINEERING SPECIAL PROJECT</b>					
1. Engineering Department Spring Lake Project					
a. Sampling of monitoring wells	8	\$	100.00		
b. Discounted total for entire sample	96	\$	60.00	\$	5,760.00
2. Engineering Department Miscellaneous (as needed)					
a. Enterococci		\$	30.00		
b. Ammonia Nitrogen		\$	20.00		
c. Total Kjeldahl Nitrogen		\$	40.00		
d. Nitrate-Nitrite as N		\$	20.00		
e. Ortho-phosphorous as P		\$	30.00		
f. Total Phosphorous as P		\$	40.00		
g. Chlorophyll A		\$	75.00		
h. Ammonium as NH4		\$	20.00		
i. Biochemical Oxygen Demand		\$	35.00		
j. Fecal Coliform		\$	25.00		
k. Discounted total for entire sample	1	\$	250.00	\$	250.00
3. Reclaim Project (monthly)					
a. Ammonia Nitrogen		\$	20.00		
b. Total Kjeldahl Nitrogen		\$	40.00		

Witnesses: Kathleen Lindback, CPPB, Senior Contract Specialist

and

Kimberly Chamberlain, Contract Specialist

c. Nitrate-Nitrite as N		\$	20.00	
d. Ortho-phosphorous as P		\$	30.00	
e. Total Phosphorous as P		\$	40.00	
f. Total Nitrogen		\$	40.00	
g. Discounted total for entire sample	120	\$	90.00	\$ 10,800.00
<b>TOTAL</b>				\$ 73,809.00
<b>Percentage Discount on Tests not listed</b>			10%	
<b>Length of Time to Repond (Hours)</b>			12	

Witnesses: Kathleen Lindback, CPPB, Senior Contract Specialist

and

Kimberly Chamberlain, Contract Specialist



## **Water Quality Analysis-Annual Contract**

**Bid # 2024-113 Due 11/08/2023 @ 2.00 PM**

### **Table of Contents**

- 1. Company Background**
- 2. Bid Package**
- 3. References**
- 4. Certifications**
- 5. Performance Evaluations**
- 6. Report Example**
- 7. USB Drive w/Complete list of submittals**

## **2.0 COMPANY BACKGROUND**

Since 1990, Sanders Laboratories has been serving the sampling and laboratory testing needs of South Florida. With our two laboratories (one in Nokomis in Sarasota County and the other in Fort Myers), we provide a broad range of services to clientele reaching from Tampa Bay to the Florida Keys and across the state from coast to coast. Throughout the years, we have developed a reputation for exceptional quality.

Specializing in analysis for inorganic parameters (metals, nutrients, physical properties, etc.) and microbiology, we are state and National Environmental Laboratory Accreditation Program (NELAP) certified for Drinking Water, Environmental Water and Soils.

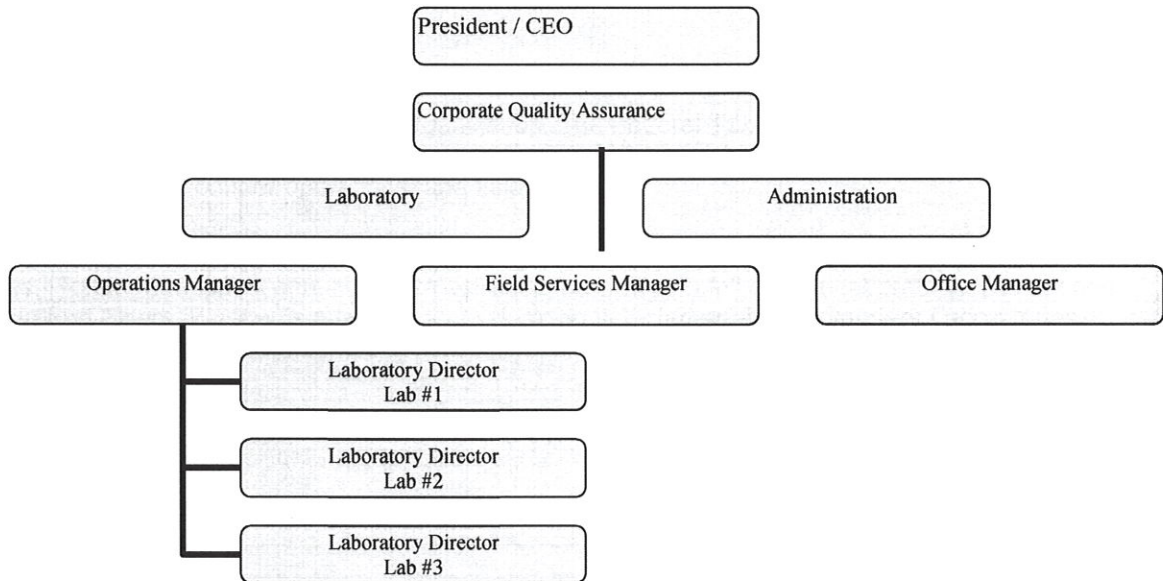
In addition, through strong relationships with other certified laboratories, we are able to offer additional services that you might need and assure the same level of integrity and quality that we always provide.

Our clients are many and varied, ranging from city and county governments to environmental firms, drilling companies, wetland studies groups and private utility companies. A small sampling of the organizations we have served includes the governments for Sarasota and Lee Counties; the city governments of Venice, North Port, Fort Myers, and Clearwater; the South Florida Water Management District; the Florida Department of Transportation; and MacDill Air Force Base.

## **3.0 Organizational Plan**

The laboratory is a commercial organization. The Federal Tax Identification # (65-1090069) Any certified methods are available upon request, if applicable. Our operations extend to both facilities, courier operations, and field services.

Sanders Laboratories, Inc. laboratories operate from two separate locations. The main facility, in Nokomis, Florida, houses all administrative activities, as well as a full service laboratory. The second facility, in Fort Myers, Florida, is a laboratory performing selected analyses. Sanders Laboratories, Inc. also provides a full service sampling staff and courier services. Sanders Laboratories, Inc is a legally responsible entity.



#### 4.0 Qualifications and Experience of Proposed Personnel

Mr Henry Mason is the President/ CEO of Sanders Laboratories. He received his MS in Chemical Engineering and an MBA from Columbia. With over 25 years of experience he is an asset to our Corporation.

Mr. Jeff Walsh is the Operations Manager at Sanders Laboratories. He has over 20 years of experience within this industry and has worked for several private and public organizations.

Ms. Katie Strothman is the Laboratory Director and Quality Assurance Manager of Sanders Laboratories, Inc. since 2004. Prior to that Katie has worked for a couple of public and private facilities. She has held a vast array of job titles ranging from receiving, chemist, microbiologist, and field technician. She has over 15 years experience in the managerial, environmental, and laboratory industry. Katie holds a Bachelor of Science degree in Biology with a minor in Chemistry from Florida Gulf Coast University.

Mrs. Tami Bright is the Office Manager at Sanders Laboratories Inc. She has Marine Science background and over 20 years of experience in the environmental and managerial industry.

**BID FORM  
WATER QUALITY ANALYSIS – UTILITIES – ANNUAL CONTRACT  
BID NO. 2024000113**

TO: Senior Division Manager - Purchasing  
Board of County Commissioners  
Charlotte County Administration Center  
18500 Murdock Circle  
Port Charlotte, Florida 33948-1094

The undersigned, as bidder, does hereby declare that he has read the Request for Bids, Instructions to Bidders, Technical Specifications & Conditions, Insurance, Safety & Health Requirements, Bid Form, and any other documentation for

**WATER QUALITY ANALYSIS – UTILITIES – ANNUAL CONTRACT**

and further agrees to furnish all items listed on the attached Bid Form in accordance with the unit price(s) submitted. The above specified documents are herein incorporated into the Bid Form and shall be defined as the contract documents.

CHARLOTTE COUNTY UTILITIES \$ 73,609 \_\_\_\_\_

Percentage discount on tests not listed 10 percent.

Length of time to respond to directive to perform. 12 hours (not to exceed 24 hours).

Please mark the following spaces with a checkmark (✓) indicating the following are made a part of your Bid Form:

- Proof of certification of subcontractors as required on (TS-02, B)
- Proof of certification of staff & classification of employee identified in accordance with Section TS-03
- Prices bid include test bottles, shipping containers, mailers, and courier
- All submittals required by Item TS-07 are enclosed
- Current Quality Manual UPON REQUEST

**NOTE:** In accordance with Florida Statutes, Section 119.071(1)(b)2: Sealed bids, proposals, or replies received by an agency pursuant to a competitive solicitation are exempt from s. 119.071(1)(b)2 and s. 24(a), Art. I of the State Constitution, except as provided by Florida Statutes 255.0518, until such time as the agency provides notice of an intended decision or until 30 days after opening the bids, proposals, or final replies, whichever is earlier. Upon release of the intended decision, if you wish to obtain the quote results, you may do so by visiting our Website at <http://purchasingbids.charlottecountyfl.gov/> under "Purchasing Bids Online", document number 241134. No information regarding the submittal will be divulged over the telephone.

**OPTIONAL ELECTRONIC BID SUBMISSIONS:** If your firm would like to submit your bid electronically, please visit <http://bit.ly/3TYAyKa> and follow given instructions.

Name of Bidder: Sanders Laboratories, Inc.

(This form to be returned)



**SUMMARY OF PAY ITEMS FOR WATER QUALITY ANALYSIS – UTILITIES – ANNUAL CONTRACT**

**PLEASE NOTE:** The entirety of each item will not always be accomplished; therefore, in such cases where it may, it is requested a cost be indicated for "Total Sample".

	<b>QTY.</b>	<b>UNIT PRICE</b>	<b>EXTENDED</b>
<b><u>TREATMENT FACILITIES</u></b>			
<b>East Port Laboratory</b>			
1. East Port Lab Reagent Water TOC Analysis	12	\$ 16	\$ 192
2. East Port Lab Reagent Water Annual Analysis	1	\$ 80	\$ 80
<b>Wastewater Treatment Plants</b>			
1. East Port Domestic Wastewater Sludge Analysis	4	\$ 140	\$ 560
2. West Port, Rotonda and Burnt Store Domestic Sludge Analysis	3	\$ 140	\$ 420
3. West Port, East Port WRF Monthly TOC and TOX	72	\$ 160	\$ 11520
4. Burnt Store WRF Monthly TOC	36	\$ 16	\$ 576
5. East Port WRF Analysis for Sodium	16	\$ 10	\$ 160
6. Burnt Store WRF Analysis for groundwater			
a. Total recoverable Arsenic		\$ 12	
b. Total recoverable Cadmium		\$ 12	
c. Total recoverable Chromium		\$ 12	
d. Total recoverable Lead		\$ 12	
e. Discounted total for entire sample	28	\$ 40	\$ 1120
7. Deep Well Injection Monitoring wells			
a. East Port WRF and West Port WRF Analysis priced per well			
1) Sodium		\$ 12	
2) Calcium		\$ 12	
3) Magnesium		\$ 12	
4) Potassium		\$ 12	
5) Bicarbonate ion		\$ 12	
6) Total Iron		\$ 12	
7) Discounted total for entire sample	24	\$ 60	\$ 1440
b. Burnt Store WRF and WTF Deep Injection Wells			
1) TOX		\$ 160	
2) Sodium		\$ 12	
3) Calcium		\$ 12	
4) Potassium		\$ 12	
5) Magnesium		\$ 12	
6) Total Iron		\$ 12	
7) Bicarbonate		\$ 12	
8) Discounted total for entire sample	16	\$ 210	\$ 3360
c. Burnt Store WRF and WTF lower zone and Brine (High TSS)			
1) Gross Alpha		\$ 60	
2) Uranium		\$ 75	
3) Radium 226		\$ 150	
4) Radium 228		\$ 150	
5) Discounted total for entire sample	12	\$ 295	\$ 3540

**NAME OF BIDDER** Sanders Laboratories, Inc.

**(This form to be returned)**

	QTY.	UNIT PRICE	EXTENDED
8. East Port, West Port, Rotonda, and Burnt Store			
a. TKN		\$ 40	
b. NO <sub>2</sub> + NO <sub>3</sub>		\$ 40	
c. NO <sub>3</sub>		\$ 40	
d. NO <sub>2</sub>		\$ 40	
e. TP		\$ 40	
f. NH <sub>3</sub> -N		\$ 20	
g. Cl		\$ 20	
h. TDS		\$ 20	
i. SO <sub>4</sub>		\$ 20	
j. TN		\$ 45	
k. Color		\$ 20	
l. Enterococci		\$ 29	
m. E. coli		\$ 29	
n. Iron		\$ 12	
o. Discounted total for entire sample	5	\$ 130	\$ 650
9. Analysis on influent and effluent			
a. CBOD <sub>5</sub>		\$ 30	
b. TSS		\$ 20	
c. Fecal Coliform		\$ 20	
d. Discounted total for entire sample	5	\$ 40	\$ 200
10. Analysis on East Port WRF, West Port WRF, Rotonda WRF or Burnt Store WRF:			
a. Primary Drinking Water Standards on effluent	1	\$ 850	
b. Secondary Drinking Water Standards on effluent	1	\$ 200	
c. Discounted total for entire sample above	4	\$ 900	\$ 3600
d. Priority Pollutants on influent and effluent	1	\$ 500	\$ 500
e. Priority Pollutants on Sludge	1	\$ 500	\$ 500
11. Sampling and Analysis of Cryptosporidium and Giardia on East Port WRF, West Port WRF, Rotonda WRF or Burnt Store WRF effluent.			
a. Cryptosporidium and Giardia on effluent		\$ 950	
b. Discounted total for entire sample	4	\$ 950	
c. Cryptosporidium and Giardia, various liquids (CCUD)	1	\$ 950	\$ 950
12. CCUD Service Areas: Special Analysis			
a. Oil & Grease on various liquids for CCUD		\$ 64	
b. Fecal Coliform, soils for CCUD		\$ 45	
c. Fecal Coliform on various liquids for CCUD		\$ 45	
d. Discounted total for entire sample	1	\$ 150	\$ 150
13. Burnt Store WRF:			
a. Total Iron on Final Effluent		\$ 25	
b. Discounted total for entire sample	52	\$ 12	\$ 624

**LEACHATE FACILITIES**

1. Treated Leachate			
a. Primary & Secondary Drinking Water Standards		\$ 1600	
b. EPA Priority Pollutants		\$ 750	
c. Dioxin Screen		\$ 400	
d. Discounted total for entire sample	1	\$ 1900	\$ 1900

NAME OF BIDDER Sanders Laboratories, Inc.

(This form to be returned)



	QTY.	UNIT PRICE	EXTENDED
2. Leachate Deep Well Injection Monitoring Wells			
a. Primary & Secondary Drinking Water Standards		\$ 1600	
b. EPA Priority Pollutants		\$ 600	
c. Dioxin Screen		\$ 400	
d. Discounted total for entire sample	2	\$ 1900	<del>\$ 3600</del> \$3,800 at
3. Monthly treated Leachate and deep well:			
a. LP-350, LP-1, and LP-2			
1. Chloride		\$ 35	
2. Sulfate		\$ 35	
3. Ammonia Nitrogen		\$ 35	
4. Total Kjeldahl Nitrogen		\$ 35	
5. Total Nitrogen as N		\$ 35	
6. Nitrate-Nitrite Nitrogen		\$ 35	
7. Chemical Oxygen Demand		\$ 35	
8. Total Dissolved Solids		\$ 35	
9. Total Suspended Solids		\$ 35	
10. Biochemical Oxygen Demand		\$ 35	
11. Total Alkalinity (as CaCO3)		\$ 35	
12. Fecal Coliform		\$ 35	
13. TOC		\$ 35	
14. Discounted total for entire sample	36	\$ 185	\$ 6660
4. Weekly In-House:			
a. LP-210, LP-220, LP-230			
1) Total Suspended Solids		\$ 35	
2) Discounted total for entire sample	156	\$ 12	\$ 1872

**DRINKING WATER ANALYSIS ON PUBLIC DRINKING WATER SYSTEMS**

**Burnt Store Water Treatment Plant**

1. Groundwater Monitoring Production Wells			
a. Chlorides		\$ 20	
b. Sulfate		\$ 20	
c. TDS		\$ 20	
d. Discounted total for entire sample	120	\$ 30	\$ 3600

**DISTRIBUTION SYSTEM – POTABLE WATER – BURNT STORE AND PORT CHARLOTTE**

1. Asbestos (62-550.511)	1	\$ 150	\$ 150
2. Nitrate and Nitrite (62-550.512)	1	\$ 20	\$ 20
3. Inorganic Contaminants (62-550.513)	1	\$ 130	\$ 130
4. Total Trihalomethanes (62-550-514), Stage 1 & Stage 2 Disinfection			
5. Byproducts Rule (10 samples quarterly)	40	\$ 40	\$ 1600
6. Haloacetic Acids (62-550.514) Stage 1 & Stage 2 Disinfection			
7. Byproducts Rule (10 samples quarterly)	40	\$ 60	\$ 2400
8. Volatile Organic Contaminants (62-550.515)	1	\$ 70	\$ 70
9. Synthetic Organic Contaminants including dioxin (past & pcbs) (62-550.516)	1	\$ 950	\$ 950
10. Microbiological (62-550.518)	125	\$ 10	\$ 1250
11. Radionuclides (gross alpha, uranium, radium-226, radium-228) (62-550.519)	1	\$ 295	\$ 295
12. Secondary Contaminants (62-550.520)	1	\$ 150	\$ 150
13. Lead and Copper (40 CFR 141 subpart I)	80	\$ 22	\$ 1760
14. Water Quality Parameters (40 CRF 141 subpart 1)	5	\$ 50	\$ 250

NAME OF BIDDER Sanders Laboratories, Inc.  
 (This form to be returned)

**QTY. UNIT PRICE EXTENDED**

**CCU ENGINEERING SPECIAL PROJECT**

1. Engineering Department Spring Lake Project:			
a. Sampling of monitoring wells.	8	\$ 100	
b. Discounted total for entire sample	96	\$ 60	\$ 5760
2. Engineering Department Miscellaneous (as needed)			
a. Enterococci		\$ 30	
b. Ammonia Nitrogen		\$ 20	
c. Total Kjeldahl Nitrogen		\$ 40	
d. Nitrate-Nitrite as N		\$ 20	
e. Ortho-phosphorous as P		\$ 30	
f. Total Phosphorous as P		\$ 40	
g. Chlorophyll A		\$ 75	
h. Ammonium as NH4		\$ 20	
i. Biochemical Oxygen Demand		\$ 35	
j. Fecal coliform		\$ 25	
k. Discounted total for entire sample	1	\$ 250	\$ 250
3. Reclaim Project (monthly)			
a. Ammonia Nitrogen		\$ 20	
b. Total Kjeldahl Nitrogen		\$ 40	
c. Nitrate-Nitrite as N		\$ 20	
d. Ortho-phosphorous as P		\$ 30	
e. Total Phosphorous as P		\$ 40	
f. Total Nitrogen		\$ 40	
g. Discounted total for entire sample	120	\$ 90	\$ 10800

**TOTAL AMOUNT**      ~~\$ 73,609~~ **\$73,809.00 at**  
**(Total only the amounts listed in the extended column)**

**NAME OF BIDDER** Sanders Laboratories, Inc.

**(This form to be returned)**





**SOURCE OF SUPPLY AND SUBCONTRACTORS**

The following sources of supply and subcontractors shall be used for **WATER QUALITY ANALYSIS – UTILITIES – ANNUAL CONTRACT**. (If quoter does not have a source of supply or subcontractor, insert "to be determined". When source or subcontractor is determined, selection will be subject to County approval. If not applicable, please state N/A).

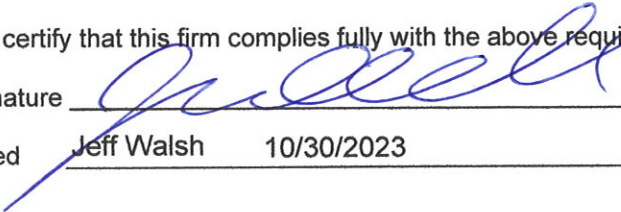
<u>Source of Supply</u>	<u>Subcontractor(s)</u>
1. _____	1. <u>Pace Labs</u> -Metals, organics, dioxin
2. _____	2. <u>BCS Labs</u> Crypto & Giardia
3. _____	3. <u>Summit Labs</u> -TOX
4. _____	4. _____
5. _____	5. _____
6. _____	6. _____

**DRUG FREE WORKPLACE FORM**

The undersigned vendor in accordance with Florida Statute 287.087 hereby certifies that Sanders Laboratories (name of business) does:

1. Publish a statement notifying employees that the unlawful manufacture, distribution, dispensing, possession, or use of a controlled substance is prohibited in the workplace and specifying the actions that will be taken against employees for violations of such prohibition.
2. Inform employees about the dangers of drug abuse in the workplace, the business's policy of maintaining a drug-free workplace, any available drug counseling, rehabilitation, and employee assistance programs, and the penalties that may be imposed upon employees for drug abuse violations.
3. Give each employee engaged in providing the commodities or contractual services that are under bid a copy of the statement specified in subsection (1).
4. In the statement specified in subsection (1), notify the employees that, as a condition of working on the commodities or contractual services that are under bid, the employee will abide by the terms of the statement and will notify the employer of any conviction of, or plea of guilty or nolo contendere to, any violation of Chapter 893 or of any controlled substance law of the United States or any state, for a violation occurring in the workplace no later than five (5) days after such conviction.
5. Impose a sanction on, or require the satisfactory participation in a drug abuse assistance or rehabilitation program if such is available in the employee's community, by any employee who is so convicted.
6. Make a good faith effort to continue to maintain a drug-free workplace through implementation of this section.

As the person authorized to sign the statement, I certify that this firm complies fully with the above requirements.

Signature   
 Dated Jeff Walsh 10/30/2023

## ATTACHMENT "A"

### POLLUTANTS FOR TESTING

Arsenic, mg/kg ~(dry weight)

Cadmium, mg/kg ~(dry weight)

Copper, mg/kg ~(dry weight)

Lead, mg/kg ~(dry weight)

Mercury, mg/kg ~(dry weight)

Molybdenum, mg/kg ~(dry weight)

Nickel, mg/kg ~(dry weight)

Selenium, mg/kg ~(dry weight)

Zinc, mg/kg ~(dry weight)

Total Nitrogen, percent ~(dry weight)

Total Phosphorous, percent ~(dry weight)

Water Extractable Phosphorus, percent ~(dry weight)

Total Potassium, percent ~(dry weight)

pH, Standard Units

Total solids, percent

Calcium Carbonate Equivalent, percent ~(dry weight)

Project Name Type text here Compliance Testing  
Description of Work  
Daily/weekly sampling and analyses for wastewater and drinking water plants  
Location Venice, FL.  
Year 20\_14- on-going Contract Price \$ 45,000  
Contact Name Chloe Crouch  
Title & Name of Firm Operations Supervisor, Venice Utilities  
Phone No. 941-882-7294  
Email: ccrouch@venicefl.gov

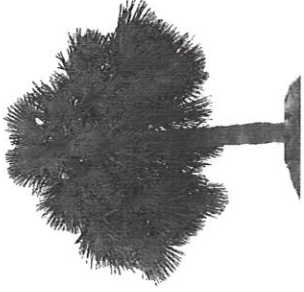
Project Name Type text here Compliance Testing  
Description of Work  
Daily/weekly sampling and analyses for wastewater and drinking water plants  
Location Bonita Springs, FL.  
Year 20\_02- on-going Contract Price \$ 70,000  
Contact Name Andy Koebel  
Title & Name of Firm Director, Bonita Springs Utilities  
Phone No. 239-390-4958  
Email: akoebel@bsu.us

Project Name Compliance Testing  
Description of Work  
Daily/weekly sampling and analyses for wastewater and drinking water plants  
Location Arcadia, FL.  
Year 20\_16- on-going Contract Price \$ 60,000  
Contact Name AJ Berndt  
Title & Name of Firm Utilities Director, Arcadia Florida  
Phone No. 863-494-3464  
Email: wtp@arcadia-fl.gov

Project Name	<u>Compliance Testing</u>		
Description of Work	<u>Daily/weekly sampling and analyses for wastewater and drinking water plants</u>		
Location	<u>Boca Grande, Florida</u>		
Year	<u>20_05-</u> on going	Contract Price	<u>\$ 60,000</u>
Contact Name	<u>Ron Bolton</u>		
Title & Name of Firm	<u>Director, Gasparilla Island Utilities</u>		
Phone No.	<u>941-964-2423</u>		
Email:	<u>ron@mygiwa.com</u>		

Project Name	<u>Compliance Testing</u>		
Description of Work	<u>Daily/weekly sampling and analyses for wastewater and drinking water plants</u>		
Location	<u>Palmetto, Fl.</u>		
Year	<u>20_05-</u> on going	Contract Price	<u>\$ 100,000</u>
Contact Name	<u>Devin Bloome</u>		
Title & Name of Firm	<u>Director, Veolia North America( City of Palmetto)</u>		
Phone No.	<u>941-723-6106</u>		
Email:	<u>devin.bloome@veolia.com</u>		





State of Florida  
 Department of Health, Bureau of Public Health Laboratories  
 This is to certify that

E84380

SANDERS LABORATORIES, INC. - NOKOMIS  
 1050 ENDEAVOR CT.  
 NOKOMIS, FL 34275

has complied with Florida Administrative Code 64E-1,  
 for the examination of environmental samples in the following categories

DRINKING WATER - MICROBIOLOGY, DRINKING WATER - PRIMARY INORGANIC CONTAMINANTS, DRINKING WATER - SECONDARY INORGANIC  
 CONTAMINANTS, NON-POTABLE WATER - GENERAL CHEMISTRY, NON-POTABLE WATER - MICROBIOLOGY, SOLID AND CHEMICAL MATERIALS -  
 GENERAL CHEMISTRY, SOLID AND CHEMICAL MATERIALS - MICROBIOLOGY

Continued certification is contingent upon successful on-going compliance with the NELAC Standards and FAC Rule 64E-1  
 regulations. Specific methods and analytes certified are cited on the Laboratory Scope of Accreditation for this laboratory and  
 are on file at the Bureau of Public Health Laboratories, P. O. Box 210, Jacksonville, Florida 32231. Clients and customers are  
 urged to verify with this agency the laboratory's certification status in Florida for particular methods and analytes.

Date Issued: July 01, 2023      Expiration Date: June 30, 2024



*Susanne Crowe*

Susanne Crowe, MHA  
 Interim Chief Bureau of Public Health Laboratories  
 DH Form 1697, 7/04  
 NON-TRANSFERABLE E84380-47-07/01/2023  
 Supersedes all previously issued certificates





**Laboratory Scope of Accreditation**

**Attachment to Certificate #: E84380-47, expiration date June 30, 2024. This listing of accredited analytes should be used only when associated with a valid certificate.**

**State Laboratory ID: E84380**

**EPA Lab Code: FL00506**

**(941) 488-8103**

**E84380  
Sanders Laboratories, Inc. - Nokomis  
1050 Endeavor Ct.  
Nokomis, FL 34275**

**Matrix: Drinking Water**

Analyte#	Analyte	Method/Tech	Method Code	Category	Effective Date
1505	Alkalinity as CaCO <sub>3</sub>	SM 2320 B	20045607	Primary Inorganic Contaminants	4/17/2007
1550	Calcium hardness as CaCO <sub>3</sub>	EPA 215.2	10025204	Secondary Inorganic Contaminants	8/25/2004
1575	Chloride	SM 4500 Cl- B	20084600	Secondary Inorganic Contaminants	1/18/2002
1575	Chloride	SM 4500-Cl <sup>-</sup> E	20086004	Secondary Inorganic Contaminants	12/29/2022
1605	Color	SM 2120 B	20039309	Secondary Inorganic Contaminants	1/18/2002
1610	Conductivity	SM 2510 B	20048606	Primary Inorganic Contaminants	8/25/2004
2525	Escherichia coli	SM 9222 G	20210199	Microbiology	11/16/2017
2525	Escherichia coli	SM 9223 B	20037676	Microbiology	1/18/2002
1730	Fluoride	SM 4500 F-C	20102403	Secondary Inorganic Contaminants, Primary Inorganic Contaminants	1/18/2002
1750	Hardness	SM 2340 C	20047603	Primary Inorganic Contaminants	4/17/2007
2556	Legionella pneumophila	SOP Sanders LEGIOLERT #41	20032657	Microbiology	11/1/2018
1810	Nitrate as N	EPA 353.2	10067604	Primary Inorganic Contaminants	3/18/2002
1840	Nitrite as N	EPA 353.2	10067604	Primary Inorganic Contaminants	3/18/2002
1855	Odor	SM 2150 B	20043805	Secondary Inorganic Contaminants	1/18/2002
1900	pH	SM 4500-H+-B	20105219	Primary Inorganic Contaminants	4/17/2007
1955	Residue-filterable (TDS)	SM 2540 C	20050402	Primary Inorganic Contaminants	4/17/2007
2000	Sulfate	ASTM D516-90	30002201	Primary Inorganic Contaminants	4/17/2007
2500	Total coliforms	SM 9222 B	20203401	Microbiology	1/18/2002
2500	Total coliforms	SM 9223 B	20037676	Microbiology	1/18/2002
1825	Total nitrate-nitrite	EPA 353.2	10067604	Primary Inorganic Contaminants	3/18/2002





**Laboratory Scope of Accreditation**

Attachment to Certificate #: E84380-47, expiration date June 30, 2024. This listing of accredited analytes should be used only when associated with a valid certificate.

State Laboratory ID: E84380

EPA Lab Code: FL00506

(941) 488-8103

**E84380**

**Sanders Laboratories, Inc. - Nokomis**  
**1050 Endeavor Ct.**  
**Nokomis, FL 34275**

**Matrix: Non-Potable Water**

Analyte#	Analyte	Method/Tech	Method Code	Category	Effective Date
1825	Total nitrate-nitrite	EPA 353.2	10067604	General Chemistry	3/18/2002
1725	Total, fixed, and volatile residue	SM 2540 G-2015	20005281	General Chemistry	2/24/2023
2058	Un-Ionized Ammonia	DEP SOP 02/12/01	90015820	General Chemistry	10/20/2014



**Laboratory Scope of Accreditation**

Attachment to Certificate #: E84380-47, expiration date June 30, 2024. This listing of accredited analytes should be used only when associated with a valid certificate.

State Laboratory ID: E84380

EPA Lab Code: FL00506

(941) 488-8103

**E84380**

**Sanders Laboratories, Inc. - Nokomis**

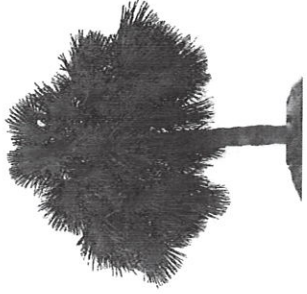
**1050 Endeavor Ct.**

**Nokomis, FL 34275**

**Matrix: Solid and Chemical Materials**

Analyte#	Analyte	Method/Tech	Method Code	Category	Effective Date
2530	Fecal coliforms	SM 9221 E-2014	20227263	Microbiology	2/24/2023
1795	Kjeldahl nitrogen - total	EPA 351.2	10065404	General Chemistry	8/22/2006
1900	pH	EPA 9040C	10244403	General Chemistry	2/9/2023
1900	pH	EPA 9045D	10198455	General Chemistry	2/9/2023
1910	Phosphorus, total	EPA 365.4	10071202	General Chemistry	8/22/2006
1950	Residue-total	SM 2540 G-2015	20005281	General Chemistry	2/24/2023
1970	Residue-volatile	SM 2540 G-2015	20005281	General Chemistry	2/24/2023
1825	Total nitrate-nitrite	EPA 353.2	10067604	General Chemistry	8/22/2006
1827	Total Nitrogen	TKN + Total Nitrate-Nitrite	60034459	General Chemistry	8/22/2006





State of Florida  
 Department of Health, Bureau of Public Health Laboratories  
 This is to certify that

E85457

SANDERS LABORATORIES, INC. (SOUTH)  
 10090 BAVARIA ROAD  
 FT. MYERS, FL 33913

has complied with Florida Administrative Code 64E-1,  
 for the examination of environmental samples in the following categories

DRINKING WATER - MICROBIOLOGY, DRINKING WATER - PRIMARY INORGANIC CONTAMINANTS, DRINKING WATER - SECONDARY INORGANIC  
 CONTAMINANTS, NON-POTABLE WATER - GENERAL CHEMISTRY, NON-POTABLE WATER - MICROBIOLOGY, SOLID AND CHEMICAL MATERIALS -  
 MICROBIOLOGY

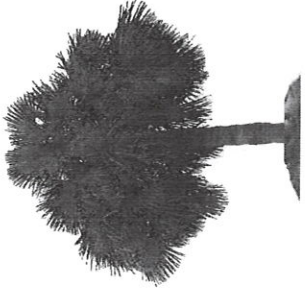
Continued certification is contingent upon successful on-going compliance with the NELAC Standards and FAC Rule 64E-1  
 regulations. Specific methods and analytes certified are cited on the Laboratory Scope of Accreditation for this laboratory and  
 are on file at the Bureau of Public Health Laboratories, P. O. Box 210, Jacksonville, Florida 32231. Clients and customers are  
 urged to verify with this agency the laboratory's certification status in Florida for particular methods and analytes.

Date Issued: July 01, 2023      Expiration Date: June 30, 2024



*Susanne Crowe*

Susanne Crowe, MHA  
 Interim Chief Bureau of Public Health Laboratories  
 DH Form 1697, 7/04  
 NON-TRANSFERABLE E85457-37-07/01/2023  
 Supersedes all previously issued certificates



State of Florida  
 Department of Health, Bureau of Public Health Laboratories  
 This is to certify that

E83079

PACE ANALYTICAL SERVICES, LLC - ORMOND BEACH FL  
 8 EAST TOWER CIRCLE  
 ORMOND BEACH, FL 32174

has complied with Florida Administrative Code 64E-1,  
 for the examination of environmental samples in the following categories

- DRINKING WATER - GROUP I UNREGULATED CONTAMINANTS, DRINKING WATER - GROUP II UNREGULATED CONTAMINANTS, DRINKING WATER - OTHER REGULATED CONTAMINANTS, DRINKING WATER - GROUP III UNREGULATED CONTAMINANTS, DRINKING WATER - MICROBIOLOGY, DRINKING WATER - PRIMARY INORGANIC CONTAMINANTS, DRINKING WATER - SECONDARY INORGANIC CONTAMINANTS, DRINKING WATER - RADIOCHEMISTRY, DRINKING WATER - SYNTHETIC ORGANIC CONTAMINANTS, NON-POTABLE WATER - EXTRACTABLE ORGANICS, NON-POTABLE WATER - GENERAL CHEMISTRY, NON-POTABLE WATER - METALS, NON-POTABLE WATER - MICROBIOLOGY, NON-POTABLE WATER - PESTICIDES-HERBICIDES-PCB'S, NON-POTABLE WATER - VOLATILE ORGANICS, SOLID AND CHEMICAL MATERIALS - EXTRACTABLE ORGANICS, SOLID AND CHEMICAL MATERIALS - GENERAL CHEMISTRY, SOLID AND CHEMICAL MATERIALS - METALS, SOLID AND CHEMICAL MATERIALS - MICROBIOLOGY, SOLID AND CHEMICAL MATERIALS - PESTICIDES-HERBICIDES-PCB'S, SOLID AND CHEMICAL MATERIALS - VOLATILE ORGANICS, BIOLOGICAL TISSUE - METALS

Continued certification is contingent upon successful on-going compliance with the NELAC Standards and FAC Rule 64E-1 regulations. Specific methods and analytes certified are cited on the Laboratory Scope of Accreditation for this laboratory and are on file at the Bureau of Public Health Laboratories, P. O. Box 210, Jacksonville, Florida 32231. Clients and customers are urged to verify with this agency the laboratory's certification status in Florida for particular methods and analytes.

Date Issued: July 01, 2023      Expiration Date: June 30, 2024



*Susanne Crowe*

Susanne Crowe, MHA  
 Interim Chief Bureau of Public Health Laboratories  
 DH Form 1697, 7/04  
 NON-TRANSFERABLE E83079-94-07/01/2023  
 Supersedes all previously issued certificates



6390 Joyce Drive  
# 100  
Golden, CO 80403

Phone 303-940-0033  
Fax 866-283-0269  
www.phenova.com

## PT Study Score Report

EPA ID: FL00506  
Laboratory: Sanders Labs, Inc. - Nokomis  
1050 Endeavor Court  
Nokomis, FL 34275  
USA

Study Number	Number of Reported Results	Number of Passing Results	Percent Passing
WPM0723	9	9	100%

### Report Definitions:

- Number of Reported Results** The number of results reported which could be evaluated. Results receiving an evaluation of "NR" or "No Evaluation" are not included.
- Number of Passing Results** The number of results reported receiving an evaluation of "Acceptable" or "Check for Error".
- Percent Passing** The percentage of results reported receiving an evaluation of "Acceptable" or "Check for Error".



6390 Joyce Drive  
# 100  
Golden, CO 80403

Phone 303-940-0033  
Fax 866-283-0269  
www.phenova.com

## PT Study Score Report

EPA ID: FL00506  
Laboratory: Sanders Labs, Inc. - Nokomis  
1050 Endeavor Court  
Nokomis, FL 34275  
USA

Study Number	Number of Reported Results	Number of Passing Results	Percent Passing
WSM0723	55	55	100%

### Report Definitions:

- Number of Reported Results** The number of results reported which could be evaluated. Results receiving an evaluation of "NR" or "No Evaluation" are not included.
- Number of Passing Results** The number of results reported receiving an evaluation of "Acceptable" or "Check for Error".
- Percent Passing** The percentage of results reported receiving an evaluation of "Acceptable" or "Check for Error".



6390 Joyce Drive  
# 100  
Golden, CO 80403

Phone 303-940-0033  
Fax 866-283-0269  
www.phenova.com

## PT Study Score Report

EPA ID: FL00506  
Laboratory: Sanders Labs, Inc. - Nokomis  
1050 Endeavor Court  
Nokomis, FL 34275  
USA

Study Number	Number of Reported Results	Number of Passing Results	Percent Passing
WP0723	22	22	100%

### Report Definitions:

**Number of Reported Results** The number of results reported which could be evaluated. Results receiving an evaluation of "NR" or "No Evaluation" are not included.

**Number of Passing Results** The number of results reported receiving an evaluation of "Acceptable" or "Check for Error".

**Percent Passing** The percentage of results reported receiving an evaluation of "Acceptable" or "Check for Error".

6390 Joyce Drive  
# 100  
Golden, CO 80403

Phone 303-940-0033  
Fax 866-283-0269  
www.phenova.com

## PT Study Score Report

EPA ID: FL00506  
Laboratory: Sanders Labs, Inc. - Nokomis  
1050 Endeavor Court  
Nokomis, FL 34275  
USA

Study Number	Number of Reported Results	Number of Passing Results	Percent Passing
WS0723	13	13	100%

### Report Definitions:

**Number of Reported Results** The number of results reported which could be evaluated. Results receiving an evaluation of "NR" or "No Evaluation" are not included.

**Number of Passing Results** The number of results reported receiving an evaluation of "Acceptable" or "Check for Error".

**Percent Passing** The percentage of results reported receiving an evaluation of "Acceptable" or "Check for Error".

## PT Study Score Report

EPA ID: FL00506  
Laboratory: Sanders Labs, Inc. - Nokomis  
1050 Endeavor Court  
Nokomis, FL 34275  
USA

Study Number	Number of Reported Results	Number of Passing Results	Percent Passing
HW0723	7	7	100%

### Report Definitions:

- Number of Reported Results** The number of results reported which could be evaluated. Results receiving an evaluation of "NR" or "No Evaluation" are not included.
- Number of Passing Results** The number of results reported receiving an evaluation of "Acceptable" or "Check for Error".
- Percent Passing** The percentage of results reported receiving an evaluation of "Acceptable" or "Check for Error".



*Ft. Myers Lab02  
10090 Bavaria Rd.  
Fort Myers, FL 33913  
TEL: (239) 590-0337 FAX: (239) 590-0536  
Website: www.sanderslabs.net*

December 09, 2022

Charlotte County Utilities  
25550 Harbor View Rd Unit #1  
Port Charlotte, FL 33980  
TEL: (941) 764-4593  
FAX: (941) 627-4603

RE: CCU Reclaim Nitrogen-Phosphorus

Order No.: 2212221

Dear :

Sanders Laboratories, Inc received 3 sample(s) on 12/6/2022 for the analyses presented in the following report.

These results only pertain to the samples as received. These pages may include, but are not limited to: Analytical Data, Chains of Custodies, Subcontracted Data and Case Narratives for samples. Results relate only to the samples in the report.

Reports are archived for a minimum of 5 years. Copies of reports are available for a fee of \$50.00. Copies will be provided within 2 weeks of the time of the request. Laboratory PQL's are available upon request.

Test results meet all the requirements of the NELAP standards, unless otherwise noted. SL 001= Nokomis Certificate # E84380 1050 Endeavor Court Nokomis Fl 34275. SL002= Fort Myers Certificate # E85457 10090 Bavaria Road Fort Myers Fl 33913

A statement of estimated uncertainty of results is available upon request. Laboratory report shall not be reproduced except in full, without the written approval of Sanders Laboratories.

Sanders Laboratories follows DEP standard operating procedures for field sampling, unless otherwise noted.

A handwritten signature in black ink, appearing to read "Katie".

Katie Strothman  
Laboratory Director



*Ft. Myers Lab02  
10090 Bavaria Rd.  
Fort Myers, FL 33913  
TEL: (239) 590-0337 FAX: (239) 590-0536  
Website: www.sanderslabs.net*

## **Definition Only**

WO#: 2212221

Date: 12/9/2022

---

### **Definitions:**

B: Results based upon colony counts outside the acceptable range.

G: Sample value indicates that the analyte was detected at or above the method detection limit in both the sample and the associated field blank, equipment blank, or trip blank, and the blank value was greater than 10% of the associated sample value. The value in the blank shall not be subtracted from associated samples. Also if the RPD on a field duplicate exceeds allowable control limit.

I: The reported value is greater than or equal to the laboratory MDL but less than the laboratory PQL.

J: Estimated Value. Lab QC not in range.

J7: Excessive amounts of Sodium Sulfite used to dechlorinate the sample due to high levels of chlorine present.

K: Off scale low, actual value is known to be less than the value given.

L: Off scale high, actual value is known to be greater than the value given.

NC: Not Certified. Parameter was ran but is not covered under laboratory accredited scopes.

Q: Sample held beyond acceptable holding time.

U: The compound was analyzed for, but not detected.

V: Indicates that the analyte was detected at or above the MDL in both the sample and the associated method blank and the value of 10 times the blank value was equal to or greater than the associated sample value.

Y: The laboratory analysis was from an improperly preserved sample.

Z: Too many colonies were present for accurate counting.



Ft. Myers Lab02  
 10090 Bavaria Rd.  
 Fort Myers, FL 33913  
 TEL: (239) 590-0337 FAX: (239) 590-0536  
 Website: www.sanderslabs.net

# Analytical Report

(continuous)

WO#: 2212221

Date Reported: 12/9/2022

**CLIENT:** Charlotte County Utilities  
**Project:** CCU Reclaim Nitrogen-Phosphorus

**Lab Order:** 2212221

**Lab ID:** 2212221-001

**Collection Date:** 12/6/2022 9:30:00 AM

**Client Sample ID:** WP Pond

**Matrix:** DRINKING WATER

Analyses	Result	MDL	PQL	Qual	Units	DF	Date Analyzed
<b>AMMONIA</b>					<b>E350.1</b>		Analyst: <b>EH</b> Labcode <b>SL001</b>
Nitrogen, Ammonia	0.738	0.0188	0.0640		mg/L	1	12/09/2022 11:46
<b>NITROGEN, NITRATE + NITRITE</b>					<b>E353.2</b>		Analyst: <b>PS</b> Labcode <b>SL001</b>
Nitrogen, Nitrate-Nitrite	2.02	0.01	0.04		mg/L	1	12/08/2022 10:23
<b>ORTHO PHOSPHATE</b>					<b>A4500-P-E</b>		Analyst: <b>EH</b> Labcode <b>SL001</b>
Ortho Phosphate	1.07	0.0100	0.0400		mg/L	1	12/06/2022 15:58
<b>TOTAL KJELDAHL NITROGEN</b>					<b>E351.2</b>		Analyst: <b>PS</b> Labcode <b>SL001</b>
Nitrogen, Kjeldahl, Total	6.17	0.0600	0.240		mg/L	1	12/08/2022 12:46
<b>TOTAL NITROGEN</b>					<b>E351.2</b>		Analyst: <b>PS</b> Labcode <b>SL001</b>
Nitrogen, Total	8.19	0.0300	0.120		mg/L	1	12/08/2022 12:46
<b>TOTAL PHOSPHOROUS</b>					<b>E365.4</b>		Analyst: <b>PS</b> Labcode <b>SL001</b>
Phosphorus, Total (As P)	1.14	0.0200	0.0800		mg/L	1	12/08/2022 12:46

**Qualifiers:** C Value is below Minimum Compound Limit. E Value above quantitation range  
 H Holding times for preparation or analysis exceeded ND Not Detected at the Reporting Limit  
 O RSD is greater than RSDlimit PL Permit Limit  
 Q Calculated Lab Limit greater than Client Requested limit R RPD outside accepted recovery limits  
 RL Reporting Detection Limit U Samples with CalcVal < MDL





Ft. Myers Lab02  
 10090 Bavaria Rd.  
 Fort Myers, FL 33913  
 TEL: (239) 590-0337 FAX: (239) 590-0536  
 Website: www.sanderslabs.net

# Analytical Report

(continuous)

WO#: 2212221

Date Reported: 12/9/2022

**CLIENT:** Charlotte County Utilities  
**Project:** CCU Reclaim Nitrogen-Phosphorus

**Lab Order:** 2212221

**Lab ID:** 2212221-002

**Collection Date:** 12/6/2022 9:00:00 AM

**Client Sample ID:** CC Reclaim

**Matrix:** DRINKING WATER

Analyses	Result	MDL	PQL	Qual	Units	DF	Date Analyzed
<b>AMMONIA</b>					<b>E350.1</b>		Analyst: EH Labcode <b>SL001</b>
Nitrogen, Ammonia	0.169	0.0188	0.0640		mg/L	1	12/09/2022 11:46
<b>NITROGEN, NITRATE + NITRITE</b>					<b>E353.2</b>		Analyst: PS Labcode <b>SL001</b>
Nitrogen, Nitrate-Nitrite	13.6	0.01	0.04		mg/L	1	12/08/2022 10:23
<b>ORTHO PHOSPHATE</b>					<b>A4500-P-E</b>		Analyst: EH Labcode <b>SL001</b>
Ortho Phosphate	2.45	0.0100	0.0400		mg/L	1	12/06/2022 15:58
<b>TOTAL KJELDAHL NITROGEN</b>					<b>E351.2</b>		Analyst: PS Labcode <b>SL001</b>
Nitrogen, Kjeldahl, Total	1.90	0.0600	0.240		mg/L	1	12/08/2022 12:46
<b>TOTAL NITROGEN</b>					<b>E351.2</b>		Analyst: PS Labcode <b>SL001</b>
Nitrogen, Total	16.9	0.0300	0.120		mg/L	1	12/08/2022 12:46
<b>TOTAL PHOSPHOROUS</b>					<b>E365.4</b>		Analyst: PS Labcode <b>SL001</b>
Phosphorus, Total (As P)	2.06	0.0200	0.0800		mg/L	1	12/08/2022 12:46

**Qualifiers:** C Value is below Minimum Compound Limit. E Value above quantitation range  
 H Holding times for preparation or analysis exceeded ND Not Detected at the Reporting Limit  
 O RSD is greater than RSDlimit PL Permit Limit  
 Q Calculated Lab Limit greater than Client Requested limit R RPD outside accepted recovery limits  
 RL Reporting Detection Limit U Samples with CalcVal < MDL



*Fi. Myers Lab02*  
 10090 Bavaria Rd.  
 Fort Myers, FL 33913  
 TEL: (239) 590-0337 FAX: (239) 590-0536  
 Website: www.sanderslabs.net

# Analytical Report

(continuous)

WO#: 2212221

Date Reported: 12/9/2022

**CLIENT:** Charlotte County Utilities  
**Project:** CCU Reclaim Nitrogen-Phosphorus

**Lab Order:** 2212221

**Lab ID:** 2212221-003

**Collection Date:** 12/6/2022 9:00:00 AM

**Client Sample ID:** CC Pond

**Matrix:** DRINKING WATER

Analyses	Result	MDL	PQL	Qual	Units	DF	Date Analyzed
<b>AMMONIA</b>					<b>E350.1</b>		Analyst: <b>EH</b> Labcode <b>SL001</b>
Nitrogen, Ammonia	0.175	0.0188	0.0640		mg/L	1	12/09/2022 11:46
<b>NITROGEN, NITRATE + NITRITE</b>					<b>E353.2</b>		Analyst: <b>PS</b> Labcode <b>SL001</b>
Nitrogen, Nitrate-Nitrite	15.3	0.01	0.04		mg/L	1	12/09/2022 11:31
<b>ORTHO PHOSPHATE</b>					<b>A4500-P-E</b>		Analyst: <b>EH</b> Labcode <b>SL001</b>
Ortho Phosphate	2.43	0.0100	0.0400		mg/L	1	12/06/2022 15:58
<b>TOTAL KJELDAHL NITROGEN</b>					<b>E351.2</b>		Analyst: <b>PS</b> Labcode <b>SL001</b>
Nitrogen, Kjeldahl, Total	1.05	0.0600	0.240		mg/L	1	12/08/2022 12:46
<b>TOTAL NITROGEN</b>					<b>E351.2</b>		Analyst: <b>PS</b> Labcode <b>SL001</b>
Nitrogen, Total	16.4	0.0300	0.120		mg/L	1	12/08/2022 12:46
<b>TOTAL PHOSPHOROUS</b>					<b>E365.4</b>		Analyst: <b>PS</b> Labcode <b>SL001</b>
Phosphorus, Total (As P)	1.97	0.0200	0.0800		mg/L	1	12/08/2022 12:46

**Qualifiers:** C Value is below Minimum Compound Limit. E Value above quantitation range  
 H Holding times for preparation or analysis exceeded ND Not Detected at the Reporting Limit  
 O RSD is greater than RSDlimit PL Permit Limit  
 Q Calculated Lab Limit greater than Client Requested limit R RPD outside accepted recovery limits  
 RL Reporting Detection Limit U Samples with CalcVal < MDL





**CHAIN OF CUSTODY RECORD**

Project #  
(Lab Use Only)

222221

Project Name: CCU Reclaim Nitrogen-Phosphorus  
 Project Location:  
 Customer Type:  
 Kit #: 5793

Report To: Sandra Lavoie  
 E-mail: Sandra.Lavoie@CharlotteCountyFL.gov  
 Bill to:  
 P.O. #

Client: West Port - WRF  
 Address: 15005 Cattle Dock Point Road  
 Port Charlotte, FL 33981

Phone: 941-613-3258  
 Fax: 941-628-3412  
 Preservative: HCL = H, HNO<sub>3</sub> = N, Na<sub>2</sub>S<sub>2</sub>O<sub>3</sub> = ST  
 H<sub>2</sub>SO<sub>4</sub> = S, NaOH = SH, NH<sub>4</sub>Cl = NH

Requested Due Date:

Sampled By (PRINT) CONROY WILLIAMS  
 Sampler Signature *[Signature]*

Bottle Lot #	Comments	Relinquished By/Affiliation		Date		Time	Analysis Requested						Sample ID # (Lab Use Only)
		Signature	Time	Signature	Time		OPHOS	NH <sub>3</sub>	PH	ZN	TKN	XON	
8038006	OKAY TO RUN AS IS... Client Initial: <i>[Signature]</i> Samples On Ice: <i>[Signature]</i> S.I.C. <i>[Signature]</i>	<i>[Signature]</i>	12/6/22	0930	12/6/22	1012	<input checked="" type="checkbox"/>	<input checked="" type="checkbox"/>	<input checked="" type="checkbox"/>	<input checked="" type="checkbox"/>	<input checked="" type="checkbox"/>	<input checked="" type="checkbox"/>	1A
2066018 (1LA0334)		<i>[Signature]</i>	12/6/22	0930	12/6/22	1356	<input checked="" type="checkbox"/>	<input checked="" type="checkbox"/>	<input checked="" type="checkbox"/>	<input checked="" type="checkbox"/>	<input checked="" type="checkbox"/>	<input checked="" type="checkbox"/>	1B
		<i>[Signature]</i>	12/6/22	0900	12/6/22	1435	<input checked="" type="checkbox"/>	<input checked="" type="checkbox"/>	<input checked="" type="checkbox"/>	<input checked="" type="checkbox"/>	<input checked="" type="checkbox"/>	<input checked="" type="checkbox"/>	2A
		<i>[Signature]</i>	12/6/22	0900	12/6/22	1435	<input checked="" type="checkbox"/>	<input checked="" type="checkbox"/>	<input checked="" type="checkbox"/>	<input checked="" type="checkbox"/>	<input checked="" type="checkbox"/>	<input checked="" type="checkbox"/>	2B
		<i>[Signature]</i>	12/6/22	0900	12/6/22	1435	<input checked="" type="checkbox"/>	<input checked="" type="checkbox"/>	<input checked="" type="checkbox"/>	<input checked="" type="checkbox"/>	<input checked="" type="checkbox"/>	<input checked="" type="checkbox"/>	3A
		<i>[Signature]</i>	12/6/22	0900	12/6/22	1435	<input checked="" type="checkbox"/>	<input checked="" type="checkbox"/>	<input checked="" type="checkbox"/>	<input checked="" type="checkbox"/>	<input checked="" type="checkbox"/>	<input checked="" type="checkbox"/>	3B



# Sanders Laboratories, Inc

Date: 10/16/2023

## Standard Price List

**ab Contact Info:** Sanders Laboratories, Inc  
1050 Endeavor Court  
Nokomis, FL 34275

**Phone:** (941) 234-1000  
**Website:** www.sanderslabs.net  
**Contact:** Henry Mason

TestCode	Method	Test Name	Matix	Units	Price
ALK	SM2320B	Alkalinity	Aqueous	mg/L C	\$35.00
BART	Bart	Bart	Aqueous	CFU/m	\$85.00
BOD	SM5210	Biological Oxygen Demand	Aqueous	mg/L	\$50.00
BOD FM	SM5210	Biological Oxygen Demand	Aqueous	mg/L	\$50.00
CBOD	SM5210	Carbonaceous Biological Oxygen Demand	Aqueous	mg/L	\$50.00
CBOD FM	SM5210	Carbonaceous Biological Oxygen Demand	Aqueous	mg/L	\$50.00
CHLOROA	SM10200H	Chlorophyll A	Aqueous	mg/m <sup>3</sup>	\$75.00
Cl E Gal	SM4500CL-	E Chloride	Aqueous	mg/L	\$35.00
CL- SOLID	FM5-552	Chloride	Solid	g	\$35.00
CL2	SM330.5	Chlorine	Aqueous	mg/L	\$35.00
Cl2 FM	SM330.5	Chlorine	Aqueous	mg/L	\$35.00
CO2	SM2320B	Alkalinity	Aqueous	mg/L C	\$35.00
COLOR	SM2120B	Color	Aqueous	Pt-Co	\$45.00
Color FM	SM2120B	Color	Aqueous	Pt-Co	\$35.00
COND	SM2510B	Specific Conductance	Aqueous	µmhos/	\$35.00
COND FM	SM2510B	Specific Conductance	Aqueous	µmhos/	\$35.00
DO	EPA 360.1	Dissolved Oxygen	Aqueous	mg/L	\$35.00
DO FM	EPA 360.1	Dissolved Oxygen	Aqueous	mg/L	\$35.00
ECOLI	EC+MUG	Escherichia Coli	Aqueous	CFU/10	\$35.00
ENTEROLERT	Enterolert	Enterococcus	Aqueous	MPN/1	\$65.00
Enterolert Nokomis	Enterolert	Enterococcus	Aqueous	MPN/1	\$65.00
F-	SM4500F-C	Fluoride	Aqueous	mg/L	\$35.00
FC	SM9222D	Fecal Coliform	Aqueous	CFU/10	\$45.00
FC FM	SM9222D	Fecal Coliform	Aqueous	CFU/10	\$45.00
FC MPN	SM9221E	Fecal Coliform	Solid	MPN/gr	\$65.00
FC MPN FM	SM9221E	Fecal Coliform	Solid	MPN/gr	\$65.00
FC MUG	SM9223B	Fecal MMO-MUG	Aqueous	MPN/1	\$35.00
FC MUG FM	SM9223B	Fecal MMO-MUG	Aqueous	MPN/1	\$35.00



# Sanders Laboratories, Inc

Date: 10/16/2023

## Standard Price List

**ab Contact Info:** Sanders Laboratories, Inc  
1050 Endeavor Court  
Nokomis, FL 34275

**Phone:** (941) 234-1000  
**Website:** [www.sanderslabs.net](http://www.sanderslabs.net)  
**Contact:** Henry Mason

TestCode	Method	Test Name	Matix	Units	Price
FCMPN	SM9221E	Fecal Coliform	Aqueous	MPN/1	\$65.00
HARD	SM2340C	Hardness	Aqueous	mg/L C	\$35.00
HPC FM	Simplate	Heterotrophic Plate Count	Aqueous	MPN/m	\$35.00
HPC NOK	Simplate	HPC	Aqueous	MPN/m	\$50.00
LEGA	Idexx Legiolert	Legionella		CFU/10	\$125.00
NH3 Gal	EPA350.1	Ammonia	Aqueous	mg/L	\$35.00
NH3 Solid	EPA350.1	Ammonia	Solid	mg/Kg	\$35.00
NH4	EPA 350.1	Ammonium	Aqueous	mg/L	\$35.00
NO2	EPA 353.2	Nitrogen, Nitrite	Aqueous	mg/L	\$35.00
NO2 FM	SM4500NO2-B	Nitrogen, Nitrite	Aqueous	mg/L	\$35.00
NO3 SOLID	EPA 353.2	Nitrogen, Nitrate	Solid	mg/Kg-	\$50.00
NOX	EPA 353.2	Nitrogen, Nitrate + Nitrite	Aqueous	mg/L	\$60.00
NOX Solid	EPA 353.2	Nitrogen, Nitrate + Nitrite	Solid	mg/Kg	\$60.00
ODOR	SM2150B	Odor	Aqueous	T.O.N.	\$45.00
Odor FM	SM2150B	Odor	Aqueous	T.O.N.	\$45.00
OPHOS	SM 4500P-E	Ortho Phosphate	Aqueous	mg/L	\$45.00
Org N	EPA 351.2	Organic Nitrogen	Aqueous	mg/L	\$30.00
Org N Solid	EPA 351.2	Organic Nitrogen	Solid	mg/Kg	\$30.00
PFT		Paint Filter Test	Solid		\$50.00
PH	SM4500-H+-B	pH	Aqueous	S.U	\$35.00
pH FM	SM4500-H+-B	pH	Aqueous	S.U	\$35.00
pH Sludge	EPA 9040C	pH	Solid	S.U	\$35.00
PH SOLID	EPA 9045D	pH	Solid	S.U	\$35.00
S	SM9020B	Student T Test	Aqueous	Student	\$275.00
SAL	SM2520B	Salinity	Aqueous	ppt	\$35.00
SAL FM	SM2520B	Salinity	Aqueous	ppt	\$35.00
SIO2	SM4500-SiO2	Silicia	Aqueous	mg/L	\$35.00





# Sanders Laboratories, Inc

Date: 10/16/2023

## Standard Price List

**ab Contact Info:** Sanders Laboratories, Inc  
 1050 Endeavor Court  
 Nokomis, FL 34275

**Phone:** (941) 234-1000  
**Website:** www.sanderslabs.net  
**Contact:** Henry Mason

TestCode	Method	Test Name	Matix	Units	Price
SO4 Gal	ASTM-D516-90	Sulfate	Aqueous	mg/L	\$35.00
SOUR	SM2710B	Specific Oxygen Uptake Rate	Aqueous	mg/g/hr	\$65.00
TC MF	SM9222B	Total Coliform Membrane Filter	Aqueous	CFU/10	\$45.00
TC MF FM	SM9222B	Total Coliform Membrane Filter	Aqueous	CFU/10	\$45.00
TC MUG	SM9223B	Total Coliform MMO-MUG	Aqueous	/100mL	\$45.00
TC MUG FM	SM9223B	Total Coliform MMO-MUG	Aqueous	MPN/1	\$40.00
TDS	SM2540C	Total Dissolved Solids	Aqueous	mg/L	\$35.00
TDS FM	SM2540C	Total Dissolved Solids	Aqueous	mg/L	\$35.00
TKN	EPA 351.2	Total Kjeldahl Nitrogen	Aqueous	mg/L	\$35.00
TKN Solid	EPA 351.2	Total Kjeldahl Nitrogen	Solid	mg/Kg	\$35.00
TN	EPA 351.2/353.2	Total Nitrogen	Aqueous	mg/L	\$40.00
TN Solid	EPA 351.2/353.2	Total Nitrogen	Solid	%	\$60.00
TP	EPA 365.4	Total Phosphorous	Aqueous	mg/L	\$35.00
TP Diss	EPA 365.4	Total Phosphorous	Aqueous	mg/L	\$35.00
TP Solid	EPA 365.4	Total Phosphorous	Solid	%	\$60.00
TS	SM2540B	Total Solids	Aqueous	mg/L	\$35.00
TS %	SM2540G	% Total Solids	Solid	%	\$35.00
TSS	SM2540	Total Suspended Solids	Aqueous	mg/L	\$35.00
TSS FM	SM2540	Total Suspended Solids	Aqueous	mg/L	\$35.00
TURB	EPA 180.1	Turbidity	Aqueous	NTU	\$45.00
TVSS	EPA 160.4	Total Volatile Suspended Solids	Aqueous	mg/L	\$35.00
Un NH3	EPA350.1	Ammonia	Aqueous	mg/L	\$35.00
WS	Hach	Well Survey	Aqueous	mg/L	\$125.00