

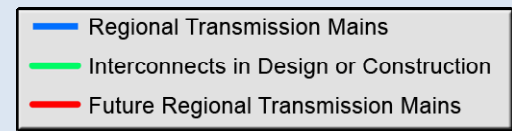
Regional Integrated Loop System
Phase 1A Interconnect
(Kings Highway / Shell Creek)
Project Update

October 6, 2010

Agenda Item 15

Regional Integrated Loop System Phase 1A Interconnect Project

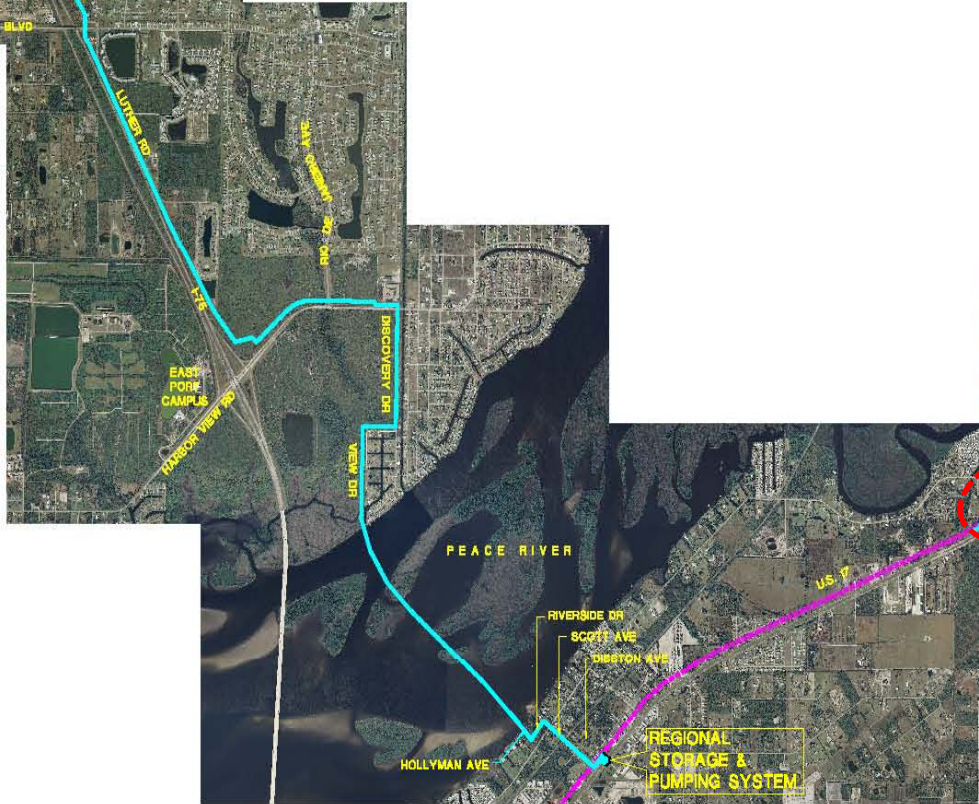
- Nine miles of 24-inch pipeline
- Pump station & storage
- \$19 million budget
- Co Funded by SWFWMD/State
- Designed, Contractor Hired
- Construction time - - 15 months
- Critical regional system connection for City of Punta Gorda
- Five new connections to Charlotte County distribution system



History Summary

- Jun. 2007: Three Party Interlocal Agreement Executed
- Sep. 2008: SWFWMD Co-Funding Agreement
- Oct. 2009: Charlotte County Denies Host Government Consent for Phase 1A
- Jan. 2010: Mediated Settlement Approved
- Jun. 2010: Construction Contract Award
Change Order No. 1 (Deducts \$1.85 M)
Approved Contingent on Charlotte BOCC Approval.
- Jul. 2010: Charlotte County BOCC Rejects Change Order No. 1.

PHASE 1A INTERCONNECT PIPELINE ROUTE (KINGS HIGHWAY / SHELL CREEK)



- LEGEND:**
- PROPOSED 24" WATER MAIN
 - - - - EXISTING PRMRWSA SYSTEM
 - - - - EXISTING 30" WATER MAIN

REGIONAL STORAGE & PUMPING SYSTEM

DMK ASSOCIATES
ENGINEERS/SURVEYORS
435 COMMERCIAL COURT, SUITE 200
VENICE, FL 33592
TEL: (841) 412-1893 FAX: (841) 412-1043
EMAIL: dmka@dmk.com
C.A. No. 3843

SEPTEMBER 2009

FIGURE 7-1

Project Budget & Funds

Item	Cost (Millions \$)	Description
Original Eng. Estimate		
Project Budget	\$19.02	Budget in Interlocal Agreement
Project Funds		
SWFWMD Funding	\$12.01	Maximum from Co-Funding Agreement
Charlotte County	\$7.99	Maximum from Charlotte County Interlocal Agreement
<i>Max. Funds Available</i>	<i>\$20.00</i>	

Estimated Project Costs

Item	Cost (Millions \$)
Total Estimated Projected Cost	\$22.10
Change Order No. 1	<u>\$1.85</u>
Project Costs with Approved Change Order No. 1	\$20.25
Maximum Funds Available	\$20.00

Questions?