

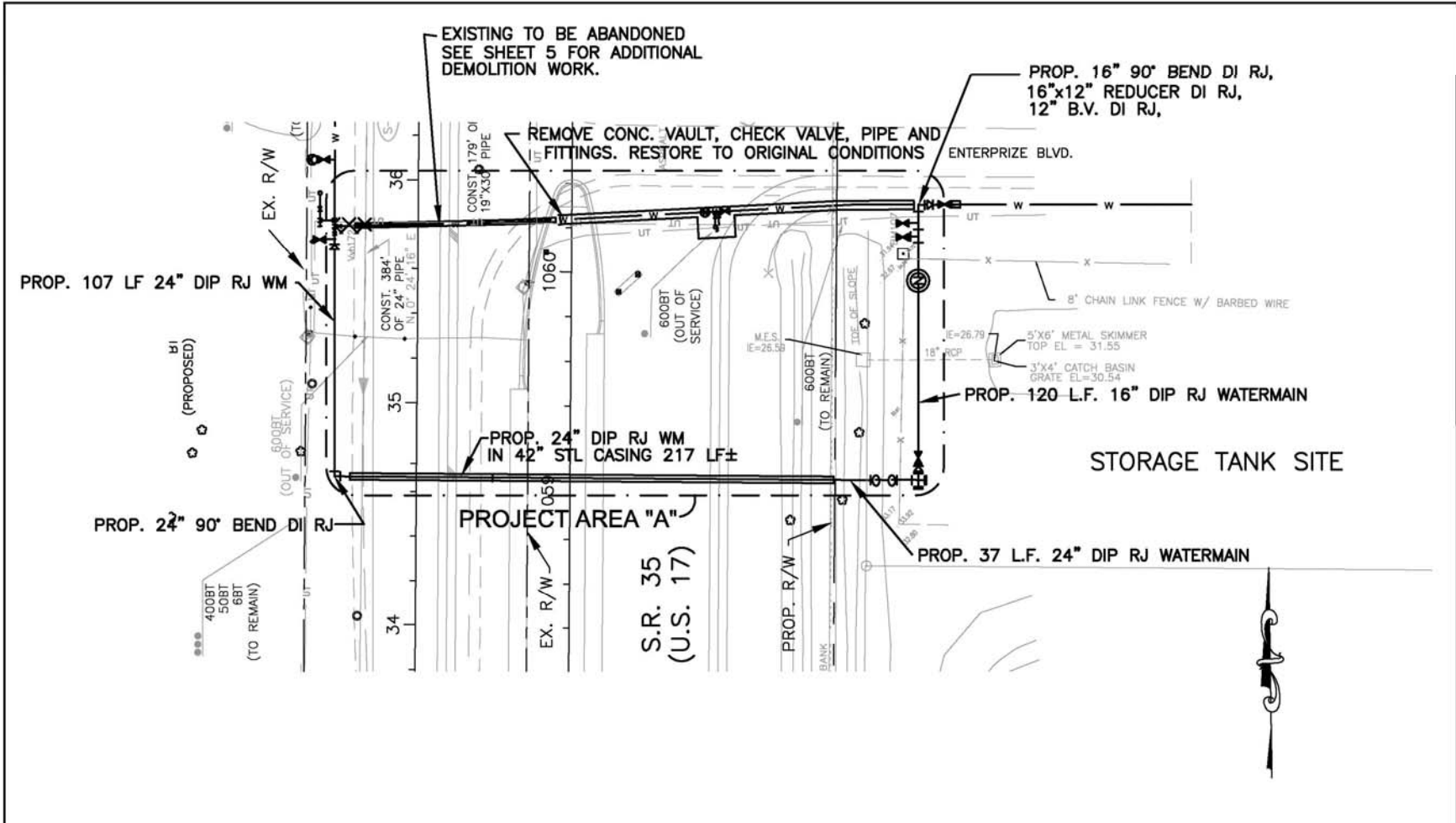
# State Road 35 (U.S. Highway 17) 20- Inch Water Main Relocation

Agenda Item 7

June 2, 2010


# State Road 35 (U.S. HWY 17) Watermain Relocation Project





PORT, BUCKLEY, BOYD & IRVING, INC. DRWG  
**PBSJ**  
 PRINCIPAL ADDRESS:  
 4026 W. BOYD BOULEVARD  
 SUITE 700  
 TAMPA, FL 33609-3712  
 FURN. CENRT. OF AUSTA, No. 24  
 PRODUCTION ADDRESS:  
 101 ARTHUR ANDERSEN PROMY  
 SUITE 200  
 SARASOTA, FLORIDA 34232  
 PH: (941) 576-0222

PEACE RIVER/MANASOTA  
 REGIONAL  
 WATER SUPPLY AUTHORITY



PROJECT	TASK
STATE ROAD 35 (U.S. HWY. 17)	PROJECT AREA "A" PLAN
20" WATERMAIN RELOCATION	

REVISIONS
ORIGINAL: MARCH 2010
1 _____
2 _____
3 _____
4 _____
5 _____

PROFESSIONAL ENGINEER
JAMES M. ENGLISH, P.E.
REGISTRATION NO. 48222
DATE _____

JOB NO.	DATE	SHEET
100112202		
DESIGNED BY: M.V.		
CHECKED BY: J.M.E.		
DATE		

