

Regional Integrated Loop System Phase 1A Interconnect

Project Status Report

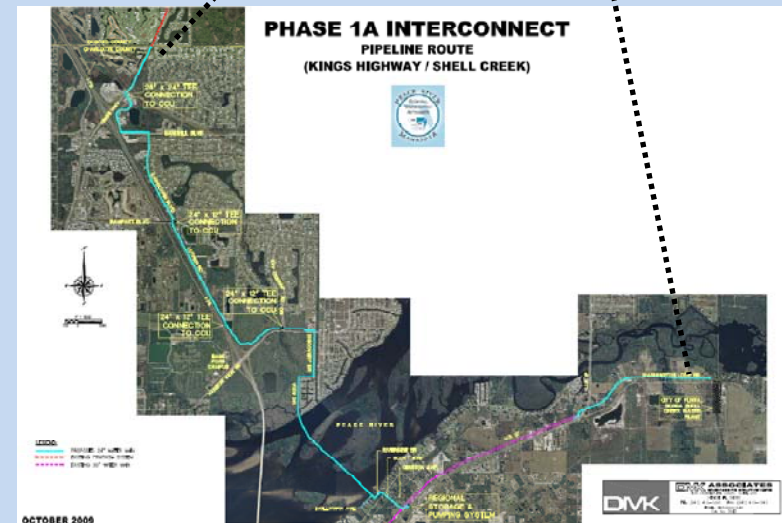
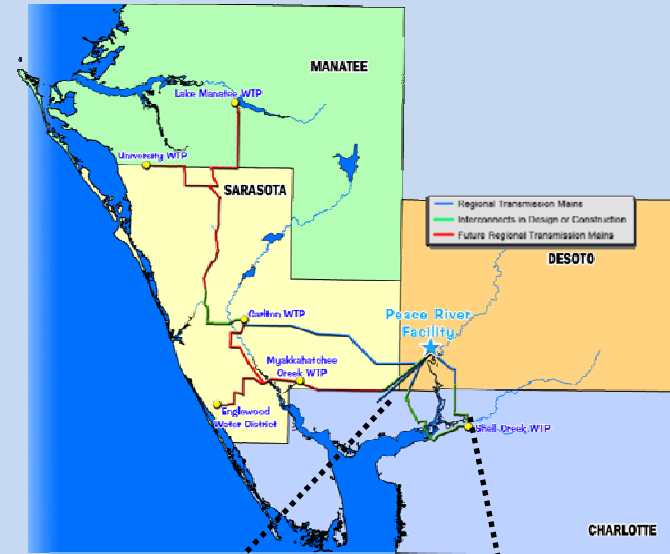
PRMRWSA Board Meeting

Agenda Item 16.a

May 5, 2010

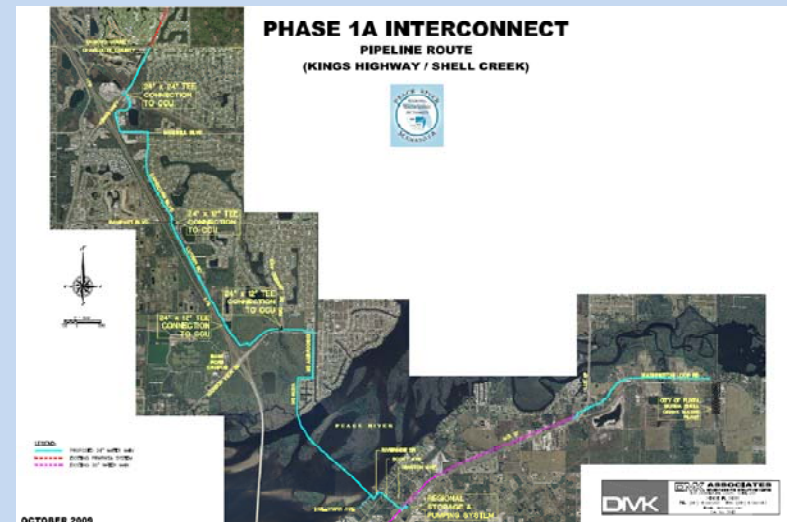
Phase 1A Interconnect

- Connects Regional System to Punta Gorda
- New connections for Charlotte County
- Nine miles of 24"/30" Pipe
- 7000 ft. river crossing
- 6 MGD pump station
- 500,000 gal. storage tank
- Co-Funded by SWFWMD



Phase 1A Interconnect

- Advertised Bid March 9
- 8 bids received April 20
- Evaluating Bids
 - Near Engineers estimate
 - Higher than bids on other recent pipeline projects
 - Considering options
- Board recommendation June 2
- Construction time ~ 16 months



Regional Integrated Loop System Phase 1A Interconnect

Resolution Authorizing Acquisition of
Private Properties Required through
Eminent Domain Action if Negotiated
Acquisition is Unsuccessful

PRMRWSA Board Meeting
Agenda Item 16.b
May 5, 2010

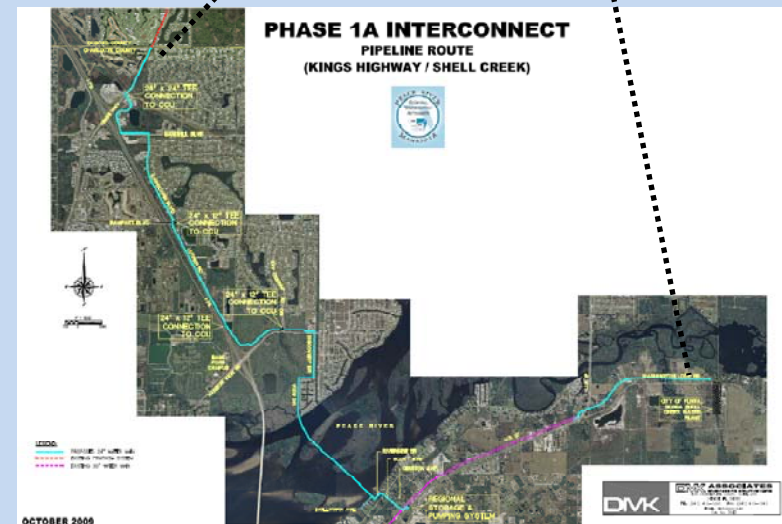
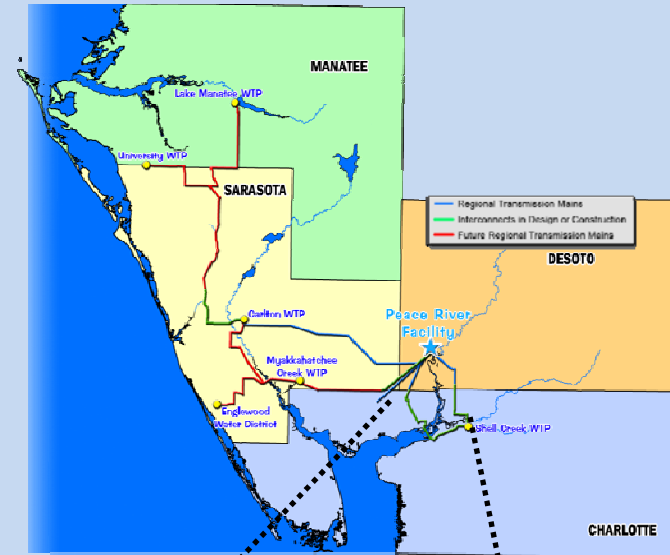
Regional Vision - Regional Integrated Loop System

- Expand regional water supply system capacity
- Enhance system reliability
- Ensure adequate supply to members and customers
- Necessary to meet projected demand



Phase 1A Interconnect

- Nine miles of pipeline along a 12-mile alignment
- Within Right-Of-Way or in public easement where appropriate
- Within private easement otherwise
- Easements
 - Permanent non-exclusive
 - Temporary construction



Temporary Construction Easement Parcel 109T

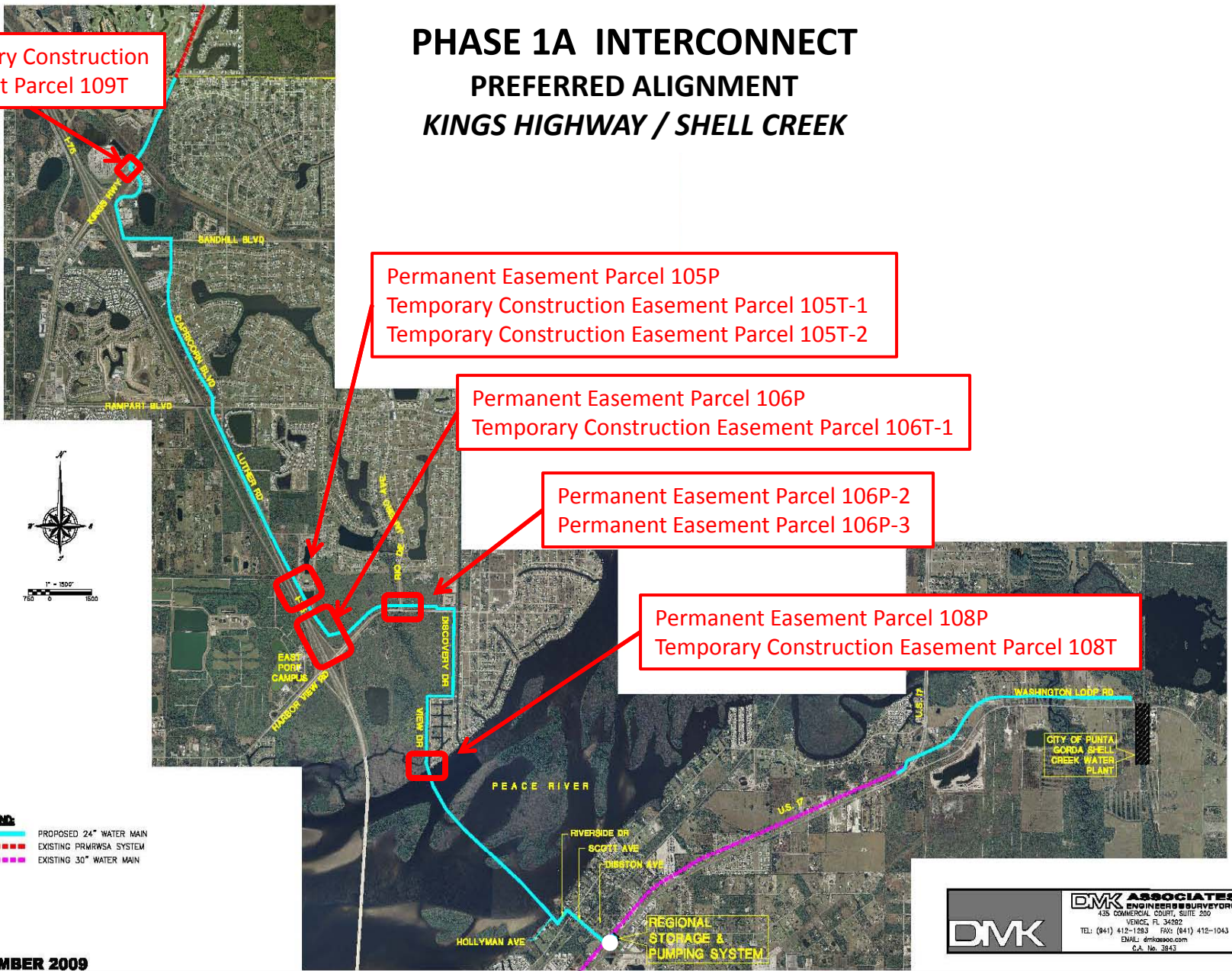
PHASE 1A INTERCONNECT PREFERRED ALIGNMENT KINGS HIGHWAY / SHELL CREEK

Permanent Easement Parcel 105P
Temporary Construction Easement Parcel 105T-1
Temporary Construction Easement Parcel 105T-2

Permanent Easement Parcel 106P
Temporary Construction Easement Parcel 106T-1

Permanent Easement Parcel 106P-2
Permanent Easement Parcel 106P-3

Permanent Easement Parcel 108P
Temporary Construction Easement Parcel 108T



SEPTEMBER 2009

DMK ASSOCIATES
ENGINEERS & SURVEYORS
435 COMMERCIAL COURT, SUITE 200
VENICE, FL 33592
TEL: (813) 412-1283 FAX: (813) 412-1043
EMAIL: dmka@aec.com
C.A. No. 3943

FIGURE 7-1

Resolution of Necessity

Summary

- Ratification of the selected Phase 1A pipeline route (Resolution 2010-02 Board-Approved on April 7, 2010)
- Project is necessary for the Authority to meet demand, and enhance system capacity and reliability
- Permanent and/or temporary easements on certain private properties must be acquired by the Authority to construct, maintain and operate the project
- Identifies the rights to be acquired on private property
- Authorizes Authority project manager to modify construction plans for Phase 1A to reduce or eliminate damage to remaining or adjacent properties if necessary
- Resolution to take effect immediately

Phase 1A Interconnect Recommendation

Approve Resolution 2010-04 entitled 'A resolution authorizing the acquisition of certain real property located within Charlotte County, Florida, to be used for the public purpose of constructing, operating and maintaining the transmission pipeline and appurtenant facilities and providing consolidated term sheet for temporary construction easements and permanent easements for private properties on Phase 1A Interconnect Pipeline Project'.