

# Water Conservation Summit Update

PRMRWSA Board

February 3, 2010

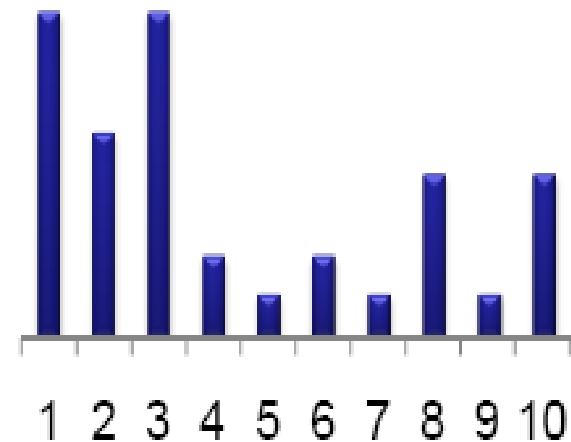
# April 3, 2009 Water Conservation Summit Participating Stakeholders

Peace River Manasota Regional Water Supply Authority  
Charlotte, DeSoto, Manatee and Sarasota counties  
Cities/Towns/Special Districts of Bradenton, Longboat  
Key, North Port, Punta Gorda, Sarasota, Venice,  
Englewood WD, Lakewood Ranch SD; and West  
Villages ID

Other stakeholders include SWFWMD, UF-IFAS,  
Conserve Florida Water, Florida Water Star Gold

# April 2009 Water Alliance Water Conservation Priorities

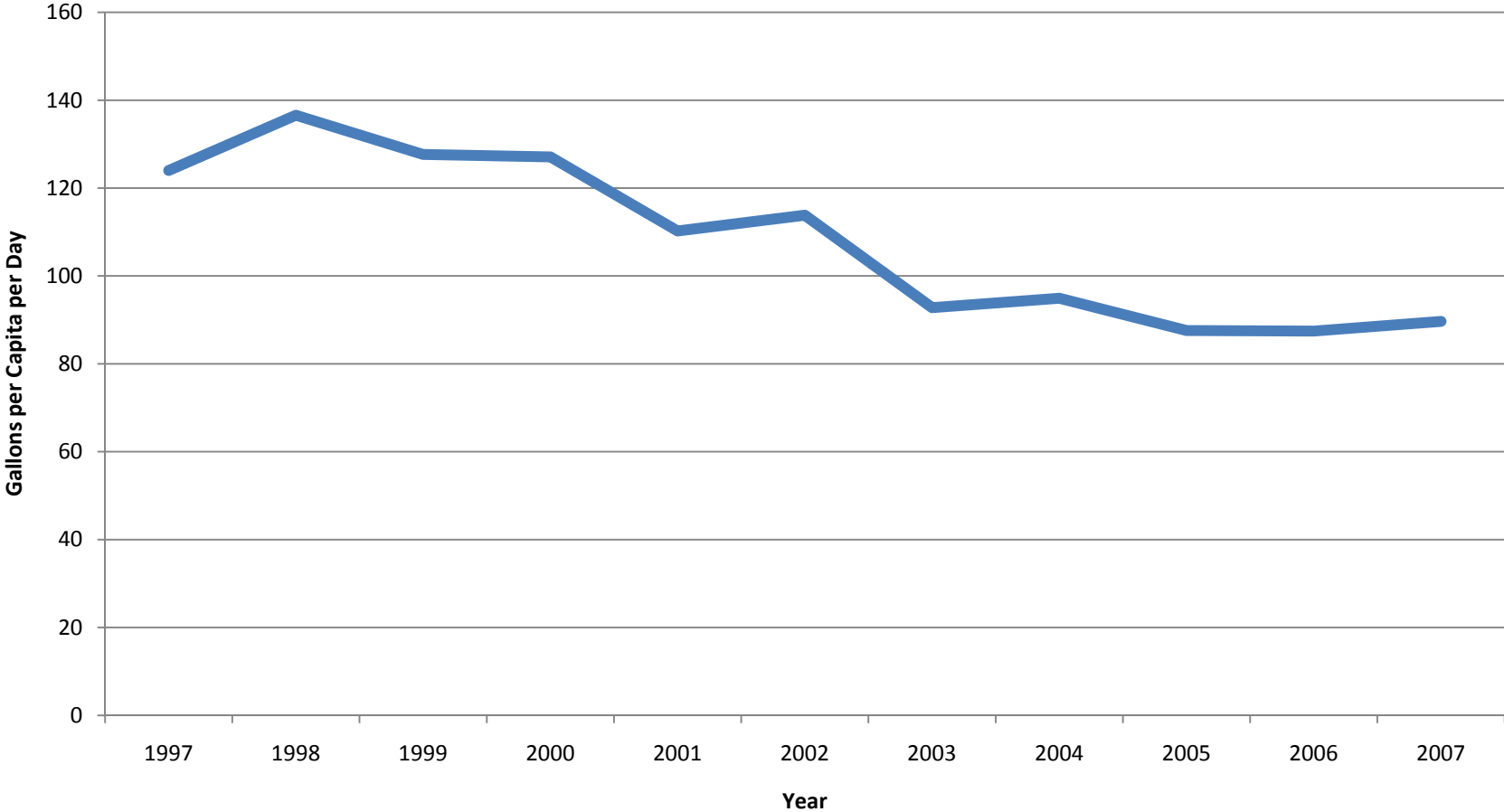
1. Invest in water conservation as an alternative source
2. Develop and incentivize per capita targets
3. Document the quantity of water being conserved
4. Use Conserve Florida Water program as a support tool
5. Create local water conservation clearinghouse
6. Consider requiring Florida Water Star Gold Certification
7. Become EPA WaterSense Promotional Partner
8. Region-wide training & certification program for irrigation
9. Minimum requirements for conservation rates
10. United public messaging



# Top 2 Water Alliance Water Conservation Priorities

1. When considering the comparative marginal costs of the next increment of water supply, the Authority/Alliance should **evaluate the relative benefits of making a comparable investment in quantifiable water conservation best management practices and standards.**
2. The Alliance members will work with the Authority in an effort to **document the quantity of water being conserved within their jurisdiction in 5-, 10-, 20-year increments and will estimate the associated financial savings.**

# Regional Per Capita Water Use



Source: SWFWMD Estimated Water Use Report, 2007

# Approach

- Focus on **Quantifiable, Potable** Water Conservation Best Management Practices (BMPs)
  - Consider both **Supply-Side** and **Demand-Side** Water Conservation BMPs
  - Consider various **Potable Water Use Sectors** (Single-Family, Multi-Family, Industrial-Commercial-Institutional)
- > **General Strategy – Increase Indoor Water Use Efficiency and Alleviate Use of Potable Water Use for Irrigation<**

# Supply-Side Water Conservation BMP Data

- **Water Audits (system losses)**
- **Metering**
- **Tiered Rates**
- **Reclaimed Water**
- **Stormwater Harvesting**

# Demand-Side Water Conservation BMP Data

- **Building Permit Data (Pre-1950, 1980, 1995)**
- **Water Use Data**
- **Existing Water Conservation Programs**
- **General**

# Other Considerations

1. Cost/Benefit of Implementing BMP?
2. Market Penetration/Timing of Implementing BMP?
3. Discounting Previous Efforts?
4. How to Fund Implementation?
5. How to Incentivize Implementation?

# Next Steps

1. Data Collection and Analyses
2. Coordination with SWFWMD Water Conservation Analyses in Regional Water Supply Plan
3. Follow Up Alliance Meeting in the Spring/Summer 2010 to present findings and discuss implementation and new priorities